

Department of Legislative Services
Maryland General Assembly
2011 Session

FISCAL AND POLICY NOTE
Revised

House Bill 1092
Ways and Means

(Prince George's County Delegation)
Education, Health, and Environmental Affairs

**Prince George's County - Compulsory Public School Attendance - Withdrawing
Student Exit Interview
PG 406-11**

This bill requires a Prince George's County school principal, or an individual authorized by a Prince George's County school principal, to request an exit interview with a child between the age of 16 and 18 who has withdrawn from school and the child's parent or guardian. The request must be sent to the child's parent or guardian. During an exit interview, the principal or individual authorized by the principal must provide information about continuing education opportunities.

The bill takes effect July 1, 2011.

Fiscal Summary

State Effect: None.

Local Effect: Although Prince George's County Public Schools may incur a minimal increase in administrative costs to contact parents and guardians and to conduct exit interviews with students who have dropped out of high school, the increase can be absorbed within the existing budgeted resources of the school system.

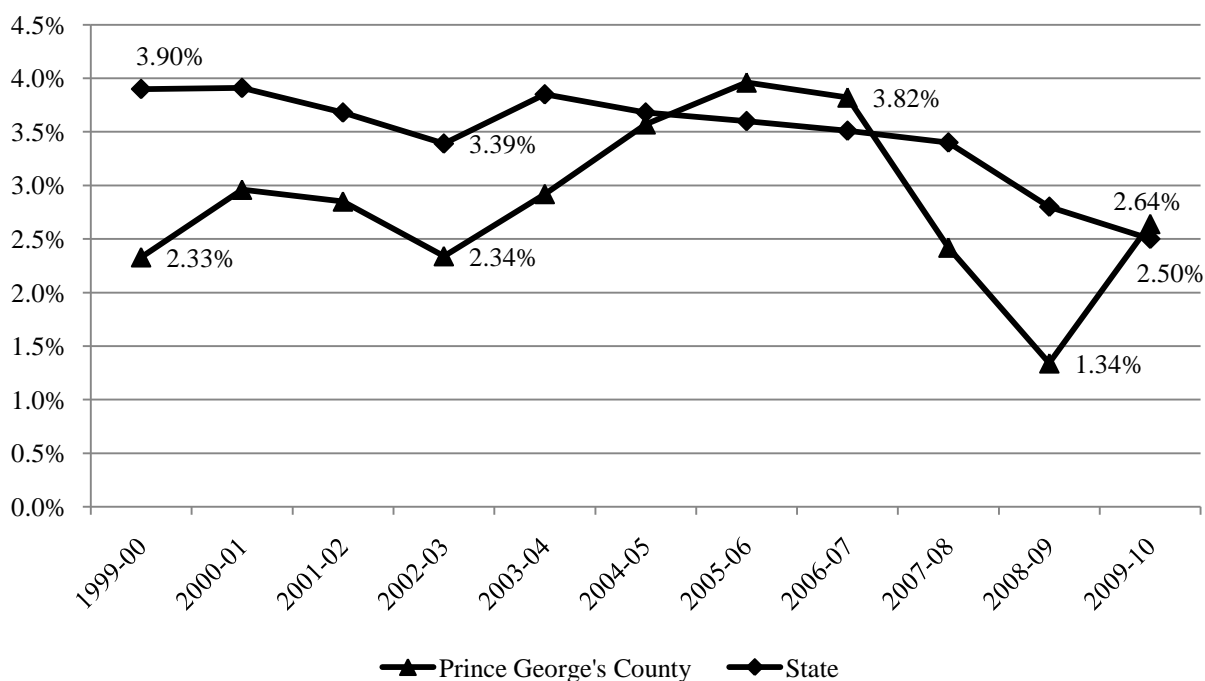
Small Business Effect: None.

Analysis

Current Law: A child age 5 to 15 must attend public school regularly unless the child is otherwise receiving regular, thorough instruction at an alternative setting (*i.e.*, a private or home school). An individual who has legal custody of a child age 5 to 15 and fails to see that the child attends school is guilty of a misdemeanor.

Background: More than 14,000 Prince George's County students dropped out of school from the 1999-2000 school year to the 2009-2010 school year, an average of approximately 1,300 per year. Reported annual dropout rates for Prince George's County and the State are charted in **Exhibit 1**. The exhibit shows that, in general, the dropout rate in Prince George's County has been lower than the statewide dropout rate. In the past few years the county's dropout rate has been inconsistent, ranging from a high of 3.82% during the 2006-2007 school year to a low of 1.34% during the 2008-2009 school year.

Exhibit 1
Number of Dropouts and Dropout Rate for Prince George's County
1999-2000 to 2009-2010 School Years



Source: Maryland State Department of Education

Additional Information

Prior Introductions: None.

Cross File: None.

Information Source(s): Maryland State Department of Education, Department of Legislative Services

Fiscal Note History: First Reader - March 8, 2011
mc/mwc Revised - House Third Reader - April 1, 2011

Analysis by: Caroline L. Boice

Direct Inquiries to:
(410) 946-5510
(301) 970-5510