

SB0385_favorable_Josh_Bokee.pdf

Uploaded by: Joshua Bokee

Position: FAV

SB0385: Education - Funding for General education Programs - Definition Alterations

Favorable

Testimony as submitted by:

Josh Bokee

Frederick County, Maryland resident

jbokee@gmail.com

The Hon. Chair, Senator Guy Guzzone

The Hon. Vice-Chair, Senator Rosapepe

Members of the Committee

My name is Josh Bokee, and I am a parent with a student in Frederick County Public Schools (FCPS). I respectfully recommend to the committee a **Favorable** vote on SB 0385.

The existing State aid formula for funding local public schools does not adequately account for situations in which a jurisdiction experiences rapid student enrollment. SB 0385 would make an adjustment to the funding formula so that there is not a gap between when large numbers of new students arrive in the school system and State aid is applied.

While Frederick County is currently experiencing the most significant student enrollment growth of all of Maryland's jurisdictions (9.8%), it is not the only one doing so, as others include Anne Arundel (1.4%), Charles (1.8%) and Carroll (2.4%) counties.

When the funding formula does not adequately reflect the actual numbers of students who are attending local schools, it creates ripple effects throughout the system. While the most obvious impacts are larger class sizes, it also means less time for school staff such as behavioral specialists and math and reading specialists to spend time with students in need.

As a parent, I believe that we are all in this together - the needs of students across the state are all vitally important. I commend the State, the General Assembly and members of the committee for your continued commitment to public education throughout the years.

Student enrollment growth shifts across the region, and while today it is Frederick and Anne Arundel that are rapidly increasing, tomorrow it will likely be other Maryland jurisdictions that will undergo similar demographic shifts. Funding is not unlimited; however, SB0385 would help make precise, needed adjustments to help ensure that every student who enters the school system is adequately funded so they can be ready to learn and can expect success.

I thank the sponsor, Senator Karen Lewis-Young and co-sponsors Senator Katie Fry-Hester and Senator Dawn Gile for introducing SB 0385 and respectfully recommend a favorable vote by the committee. Thank you.

Comments SB385 2024.01.26.24.pdf

Uploaded by: Karen Yoho

Position: FAV

Comments SB385

Thank you for the opportunity to provide comments on this legislation. Frederick County Public Schools has experienced significant enrollment growth over the past five years. From FY2020 to FY2024, our enrollment has grown by 3,853 students. For FY2025, FCPS is projected to add more than 1,000 students. To quantify that level a little differently, the percentage of student enrollment in FCPS is the highest in the State and is more than four times greater than the next fastest growing county.

Supporting the needs of our students is exceptionally challenging while experiencing this level of growth because school funding is currently based upon the previous year's enrollment. Our FY25 revenue is based upon the number of students from SY2023-2024. For a system experiencing significant growth, this creates a funding lag. School systems must plan for the students they expect to arrive when we open our doors in the fall. Beyond the classroom, growth requires additional staff for maintenance and operations, payroll, and human resources in order to meet the needs of our schools and students.

Providing an escalation factor that captures the enrollment from previous years will assist in mitigating the funding lag currently enshrined in the state's funding formula. The measured approach allows for the funding escalation to be tempered by any fluctuations in growth school systems experience.

Enrollment Growth FY2020 - FY2024.pdf

Uploaded by: Karen Yoho

Position: FAV

SB385_Nash_FAV.pdf

Uploaded by: Katie Nash

Position: FAV



FREDERICK

MARYLAND

SB385: Education - Funding for General education Programs - Definition Alterations

Favorable

Thank you for your consideration of SB385, a bill that seeks to address the school funding formula for high-growth jurisdictions. The legislation's intent is to consider the implications of a gap between when large numbers of new students arrive in the school system and State aid is applied. Our growth challenges are significant – while we work to adopt our policies at the local level, I respectfully ask that you assist our work and consider ways we can make modifications at the state level for our students.ⁱ

This Committee works incredibly hard to respond to the ever-changing fiscal climate. The Committee works hard to see that the needs of all Marylanders are considered. I respectfully request that your consideration of this legislation is one more tool we have to have the conversation about the funding formula and if the way we are currently operating is in fact addressing our needs in the best way. Frederick may be the high growth area today – and certainly we are proud that so many want to live in our great City – but we know our demographics are also an ever-changing data point. Your consideration of high-growth jurisdictions is smart policy-making for the future.

As a member of the City of Frederick's Board of Aldermen (City Council) with pride for pride for our City's 43,000 FCPS students, as well as a parent with a student in Frederick County Public Schools (FCPS), I respectfully recommend to the committee a Favorable vote on SB 0385.

Respectfully Submitted,

Katie Nash, Alderwoman, City of Frederick
301.524.9142 (cell)
knash@cityoffrederickmd.gov

ⁱ While Frederick County is currently experiencing the most significant student enrollment growth of all of Maryland's jurisdictions (9.8%), it is not the only one doing so, as others include Anne Arundel (1.4%), Charles (1.8%) and Carroll (2.4%) counties.

SB385_MSEA_Zwerling_FAV.pdf

Uploaded by: Samantha Zwerling

Position: FAV

SUPPORT
Senate Bill 385
Education – Funding for General Education Programs – Definition
Alterations

Senate Budget and Taxation Committee
January 31, 2024

Samantha Zwerling
Government Relations

The Maryland State Education Association supports Senate Bill 385, as amended by the sponsor, which would create a task force to examine changing the way student enrollment is calculated for the purposes of education funding.

MSEA represents 75,000 educators and school employees who work in Maryland's public schools, teaching and preparing our almost 900,000 students so they can pursue their dreams. MSEA also represents 39 local affiliates in every county across the state of Maryland, and our parent affiliate is the 3 million-member National Education Association (NEA).

MSEA supports passage of an adequate, sustainable, predictable revenue stream that will adequately fund both the operating costs of our public schools. A great public school for every child means our students have updated technology, small manageable classes, safe and modern schools, proper healthcare and nutrition, and have highly qualified and highly effective educators.

As currently implemented, school funding is based on enrollment counts from the previous year. This does not do a good job of accounting for growth in enrollment in the current year, while school systems and educators still have to serve all students enrolled in a school whether the funding is there for that student or not. This gap impacts students and the services that educators can provide them. A task force is welcomed to ensure that school funding matches the students in our classrooms.

MSEA urges a Favorable Report on Senate Bill 385 as amended by the sponsor.

MD County Enrollment Changes Over Time.xlsx - Shee

Uploaded by: Senator Karen Lewis Young

Position: FAV

Changes in Enrollment by School System Over Five Years

School Year Starti	2018	2019	2020	2021	2022	2023	Avg. % Change/5yrs	Avg. % Change/5yrs w/o 2020					
		% Change from 2018	% Change from 2019	% Change from 2020	% Change from 2021	% Change from 2022							
Allegany	8539	8437	-1.21%	8075	-4.48%	8132	0.70%	8181	0.60%	8205	0.29%	-0.82%	0.10%
Anne Arundel	83300	84984	1.98%	83044	-2.34%	83163	0.14%	84452	1.53%	84346	-0.13%	0.24%	0.88%
Baltimore City	79297	79187	-0.14%	77856	-1.71%	77807	-0.06%	75995	-2.38%	75811	-0.24%	-0.91%	-0.71%
Baltimore	113814	115038	1.06%	111084	-3.56%	111139	0.05%	111083	-0.05%	110275	-0.73%	-0.64%	0.08%
Calvert	15936	16022	0.54%	15292	-4.77%	15407	0.75%	15461	0.35%	15179	-1.82%	-0.99%	-0.05%
Caroline	5829	5874	0.77%	5553	-5.78%	5551	-0.04%	5667	2.05%	5676	0.16%	-0.57%	0.73%
Carroll	25179	25345	0.65%	24568	-3.16%	25054	1.94%	25787	2.84%	26123	1.30%	0.72%	1.69%
Cecil	15307	15256	-0.33%	14718	-3.66%	14780	0.42%	15047	1.77%	14997	-0.33%	-0.43%	0.38%
Charles	27108	27521	1.50%	26768	-2.81%	26875	0.40%	27598	2.62%	27765	0.61%	0.46%	1.28%
Dorchester	4785	4710	-1.59%	4662	-1.03%	4573	-1.95%	4523	-1.11%	4608	1.88%	-0.76%	-0.69%
Frederick	42713	43828	2.54%	43221	-1.40%	45220	4.42%	46899	3.58%	47681	1.67%	1.57%	3.05%
Garrett	3842	3834	-0.21%	3648	-5.10%	3502	-4.17%	3500	-0.06%	3455	-1.29%	-2.16%	-1.43%
Harford	37826	38429	1.57%	37333	-2.94%	37920	1.55%	38037	0.31%	38105	0.18%	0.13%	0.80%
Howard	57907	58868	1.63%	57293	-2.75%	57325	0.06%	57676	0.61%	57633	-0.07%	-0.11%	0.56%
Kent	1912	1918	0.31%	1812	-5.85%	1786	-1.46%	1751	-2.00%	1732	-1.09%	-2.02%	-1.06%
Montgomery	162680	165267	1.57%	160564	-2.93%	158231	-1.47%	160554	1.45%	160223	-0.21%	-0.32%	0.33%
Prince George's	132667	135962	2.42%	131657	-3.27%	128777	-2.24%	131143	1.80%	131325	0.14%	-0.23%	0.53%
Queen Anne's	7749	7764	0.19%	7395	-4.99%	7440	0.60%	7387	-0.72%	7502	1.56%	-0.67%	0.41%
Saint Mary's	17999	18083	0.46%	17246	-4.85%	17480	1.34%	17493	0.07%	17223	-1.54%	-0.90%	0.08%
Somerset	2930	2905	-0.86%	2818	-3.09%	2741	-2.81%	2773	1.15%	2894	4.36%	-0.25%	0.46%
Talbot	4674	4703	0.62%	4524	-3.96%	4533	0.20%	4523	-0.22%	4502	-0.46%	-0.77%	0.03%
Washington	22681	22993	1.36%	21939	-4.80%	22171	1.05%	22297	0.57%	22549	1.13%	-0.14%	1.02%
Wicomico	14949	15203	1.67%	14354	-5.91%	14664	2.11%	14900	1.58%	15086	1.25%	0.14%	1.65%
Worcester	6810	6882	1.05%	6711	-2.55%	6803	1.35%	6841	0.56%	6848	0.10%	0.10%	0.76%

Even in the midst of CoViD-19, Frederick County had the second highest percentage of new children enrolled in the state.

Redder = more unfunded students, Greener = more overfunded students

Created by Andrew Burgoyne

Source: Maryland Department of Education: <https://marylandpublicschools.org/about/Pages/DCAA/SSP/index.aspx>

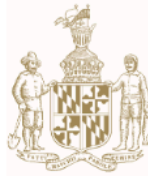
SB0385 Cover Letter.pdf

Uploaded by: Senator Karen Lewis Young

Position: FAV

KAREN LEWIS YOUNG
Legislative District 3
Frederick County

Committee on Education, Energy,
and the Environment



James Senate Office Building
11 Bladen Street, Room 302
Annapolis, Maryland 21401
410-841-3575 · 301-858-3575
800-492-7122 Ext. 3575
Karen.Young@senate.state.md.us

THE SENATE OF MARYLAND
ANNAPOLIS, MARYLAND 21401

The Honorable Guy Guzzone, Chair
The Honorable Jim Rosapepe, Vice Chair
Budget and Taxation Committee
Maryland Senate
Annapolis, MD 21401

January 31st, 2024

Chair Guzzone, Vice Chair Rosapepe, and esteemed members of this committee,

This bill, SB385 Funding for General Education Programs - Definition Alterations, will establish a workgroup to study the gaps in funding that occur in school systems across the state due to the growth in their enrollment rates. The original intent of this bill was to refine the education funding formula. How exactly that needs to be done is still a question to be answered. I also recognize a major fiscal note at this time would be an insurmountable challenge. I amended the bill so that, in partnership with stakeholders, we can determine the best path toward fair funding.

Every year, the attendance snapshot is taken on September 30th but the funding due each school system, based on that snapshot, is not disbursed until July 1st the following year. The problem is that some school systems are growing at rates that leave counties reeling to pick up the slack. In Frederick County, our school system has grown an average of more than 3% over the past 5 years leaving 782 children without state funding. Last school year, in Montgomery County, that number was 2,323 children. Prince George's County public school attendance grew by 2,366 children last school year.

The equity of education in our state is threatened if we do nothing. Whole schools of children across our state are going unfunded. With a negligible fiscal note, the workgroup will study this pressing issue and share a report before next session. I urge a favorable report.

Sincerely,

A handwritten signature in blue ink that reads "Karen Lewis Young".

Senator Karen Lewis Young

Sponsor Amendment

Uploaded by: Senator Karen Lewis Young

Position: FAV



SB0385/233025/1

AMENDMENTS
PREPARED
BY THE
DEPT. OF LEGISLATIVE
SERVICES

30 JAN 24
10:57:20

BY: Senator Lewis Young

(To be offered in the Budget and Taxation Committee)

AMENDMENTS TO SENATE BILL 385

(First Reading File Bill)

AMENDMENT NO. 1

On page 1, in line 2, strike “**Education – Funding for General Education Programs – Definition Alterations**” and substitute “**Task Force on Education Funding and Student Population Growth**”; strike beginning with “altering” in line 3 down through “programs” in line 4 and substitute “establishing the Task Force on Education Funding and Student Population Growth”; in line 5, strike “funding for general education programs” and substitute “the Task Force on Education Funding and Student Population Growth”; and strike in their entirety lines 6 through 10, inclusive.

AMENDMENT NO. 2

On page 1, in line 12, strike “the Laws of Maryland read as follows”.

On pages 1 through 8, strike in their entirety the lines beginning with line 13 on page 1 through line 30 on page 8, inclusive and substitute:

“(a) There is a Task Force on Education Funding and Student Population Growth.

(b) The Task Force consists of the following members:

(1) two members of the Senate of Maryland, appointed by the President of the Senate;

(2) two members of the House of Delegates, appointed by the Speaker of the House;

- (3) the following members, appointed by the Governor:
- (i) one representative of the Office of the Governor;
 - (ii) one representative of the State Department of Education;
 - (iii) one representative of the Maryland Association of Boards of Education;
 - (iv) one representative of the Maryland State Education Association;
 - (v) one representative of Maryland Free State PTA;
 - (vi) one representative of the Maryland Association of Counties;
 - (vii) two representatives of the general public; and
 - (viii) one representative of the Office of the Comptroller.
- (c) The Governor shall designate the chair of the Task Force.
- (d) The Office of the Governor shall provide staff for the Task Force.
- (e) A member of the Task Force:
- (1) may not receive compensation as a member of the Task Force; but
 - (2) is entitled to reimbursement for expenses under the Standard State Travel Regulations, as provided in the State budget.
- (f) The Task Force shall:

(1) analyze challenges related to the delay in student enrollment counts and its effect on school funding;

(2) analyze the connection between growing student populations and the provision of school funding; and

(3) make recommendations regarding improvements to the provision of school funding.

(g) On or before December 15, 2024, the Task Force shall report its findings and recommendations to the Governor and, in accordance with § 2-1257 of the State Government Article, the General Assembly.”.

On page 9, in line 1, after “2024.” insert “It shall remain effective for a period of 1 year and, at the end of June 30, 2025, this Act, with no further action required by the General Assembly, shall be abrogated and of no further force and effect.”.

SB 0385, FAV, FCG OCE, LS24.pdf

Uploaded by: Jessica Fitzwater

Position: FWA



FREDERICK COUNTY GOVERNMENT
OFFICE OF THE COUNTY EXECUTIVE

Jessica Fitzwater
County Executive

SB 0385 – Education – Funding for General Education Programs – Definition Alterations

DATE: January 31, 2024
COMMITTEE: Senate Budget and Taxation Committee
POSITION: Favorable with Amendments
FROM: The Office of Frederick County Executive Jessica Fitzwater

As the County Executive of Frederick County, I urge the committee to give **SB 385 – Education – Funding for General Education Programs – Definition Alterations** as amended a favorable report.

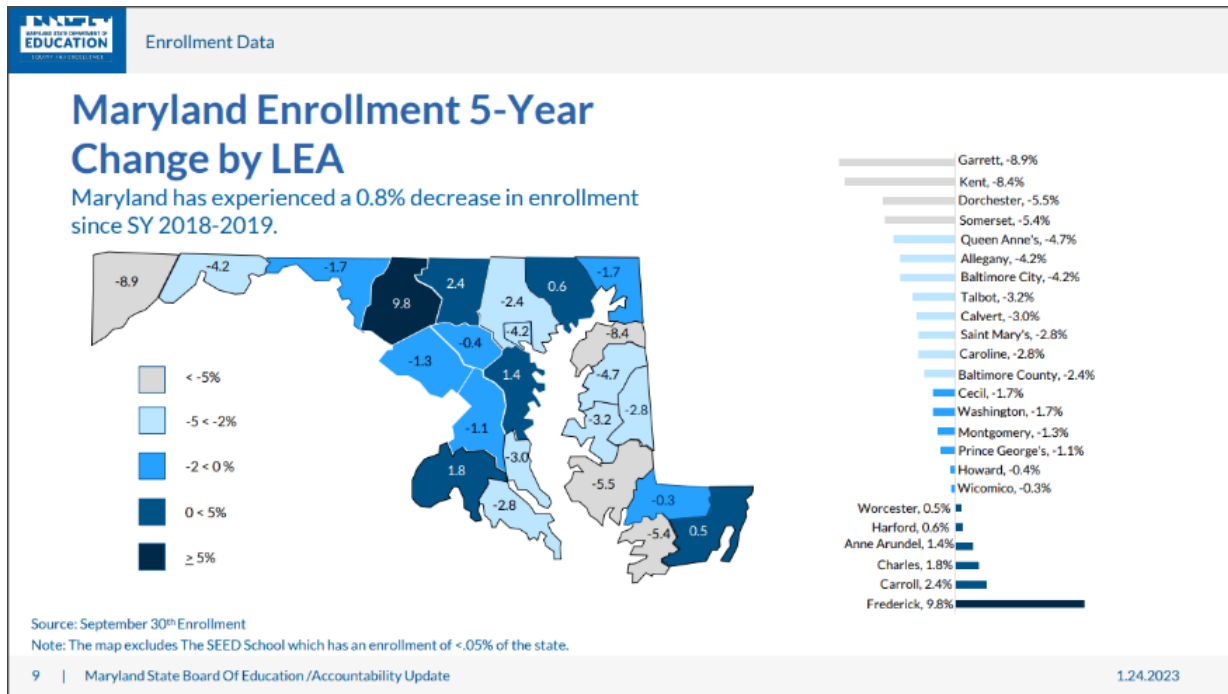
As you may know, Frederick County is the fastest-growing jurisdiction in Maryland and that trend is particularly apparent in our public school enrollment (see attached graphic). While many school systems are seeing enrollment decrease, Frederick County Public Schools' enrollment growth rate has consistently been at 9.8%. This growth is a great endorsement of the quality education that FCPS provides and an asset to Frederick County as a community.

However, the current foundation formula determines state aid using local enrollment numbers that have a built-in lag. Local enrollment is measured on September 30th of the prior school year, which means the State share of per-pupil funding does not reach school systems until the following school year. This puts a disproportionate burden on jurisdictions with high rates of enrollment growth, such as Frederick County. As student enrollment increases, school systems and the Counties that fund them need state support for the infrastructure and resources necessary to meet the needs of each student at the time that they are in our schools.

SB 385, as amended, establishes a task force to look at this issue and make recommendations for adjustments to the funding provisions regarding student enrollment counts. As with many issues, I believe the first step to finding a solution is to bring together the many stakeholders and experts.

Thank you for your consideration of SB 385 and I urge a favorable report.

Jessica Fitzwater, County Executive
Frederick County, MD



The graphic above was obtained from the Maryland State Department of Education September 30th Enrollment Report published January 2023.