

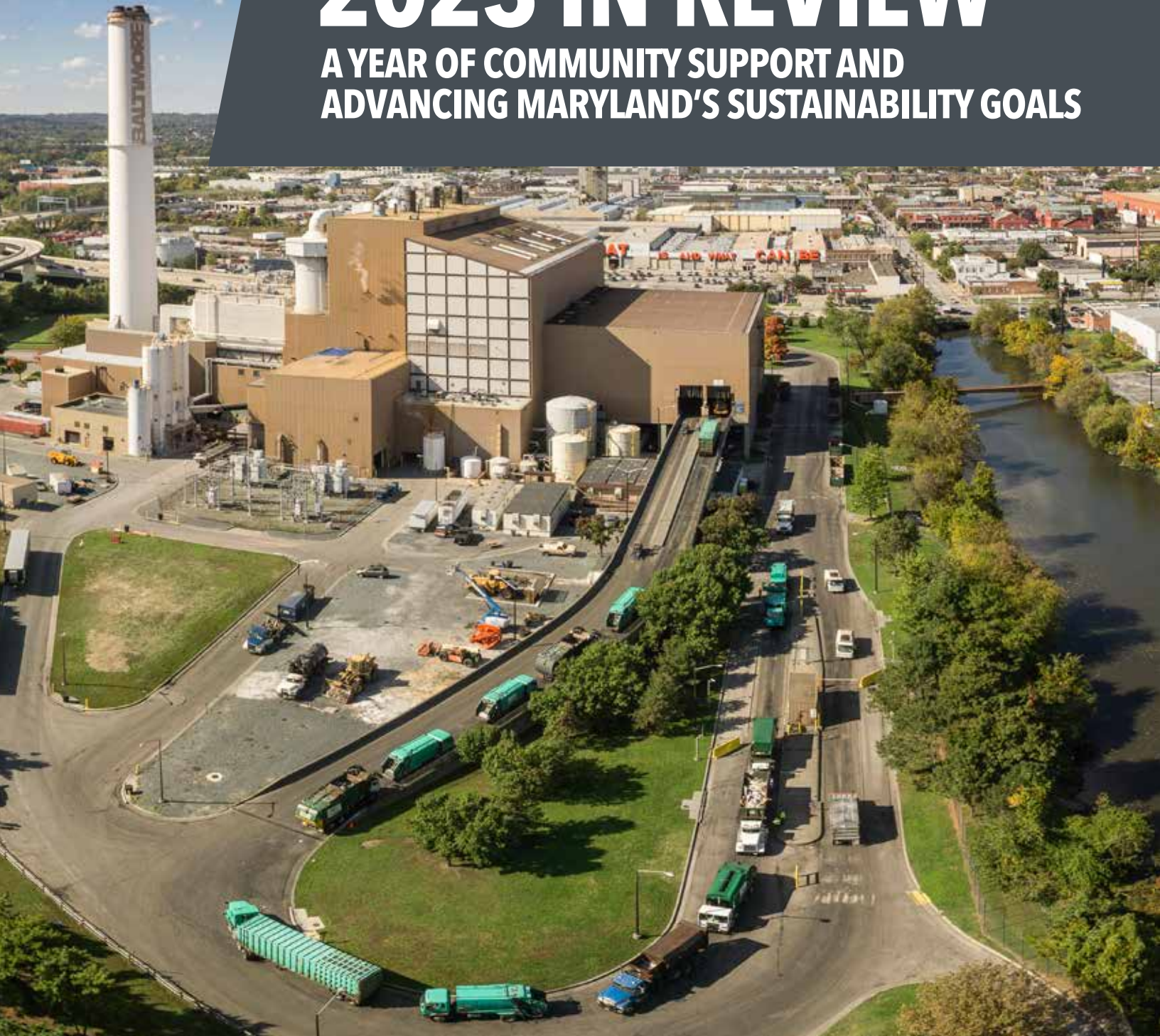


**WASTE
INNOVATIONS**

PERFORMANCE FOR THE PLANET®

2023 IN REVIEW

**A YEAR OF COMMUNITY SUPPORT AND
ADVANCING MARYLAND'S SUSTAINABILITY GOALS**



**EACH YEAR,
WIN WASTE BALTIMORE**



CONVERTS

700K tons of waste into nearly 400K megawatts hours of renewable energy



ADVANCES

the objectives of Maryland's Renewable Energy Portfolio Standards, which reduce the state's reliance on fossil fuels



CONTRIBUTES MILLIONS

to Baltimore City's budget, offsetting \$100M taxpayers would otherwise need to shoulder to expand landfills and haul waste to other states



RECOVERS AND RECYCLES

12K+ tons of metals from the waste stream



INVESTS \$750K

in Baltimore to clean, green, train, and support the city



SUPPORTS 80 FULL-TIME EMPLOYEES

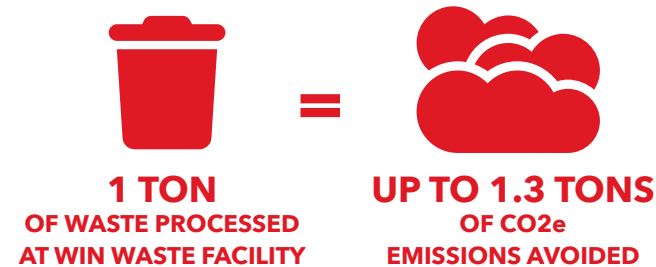
with living wages – hourly compensation starts at \$22/hour and averages \$36/hour – and contributes \$9 million in payroll tax revenue

WHY WASTE-TO-ENERGY?

CONVERTING BALTIMORE'S TRASH HELPS MARYLAND THRIVE

Maryland households and businesses are producing millions of tons of waste each year. Every day, the WIN Waste Innovations waste-to-energy facility in Baltimore converts approximately 2,250 tons of the city's residential and commercial waste into renewable energy through a highly efficient combustion process that meets strict state and federal standards.

By recovering the renewable energy from Baltimore's waste, WIN Waste diverts all those tons of waste from landfills, where they would otherwise decompose, releasing methane, a greenhouse gas that has a global warming potential more than 80 times that of carbon dioxide in its first 20 years. Diverting waste from landfills and converting it into a renewable resource eliminates vast amounts of future greenhouse gas emissions.



REDUCING TRAFFIC-RELATED AIR POLLUTION

By processing Baltimore's waste, WIN Waste also helps eliminate thousands of tractor trailer trips to and from landfills, which reduces traffic-related air pollution, or TRAP, which is the leading cause of air pollution affecting those living in urban areas.



“Waste-to-energy is the better alternative to landfilling for managing MSW that is not recyclable, a reality explicitly recognized by the waste management hierarchy recommended by both the U.S. [EPA] and the European Union.”

– Marco J. Castaldi, Ph.D.
“The Scientific Truth About Waste-to-Energy”

WIN WASTE HELPS ADVANCE MARYLAND'S RPS OBJECTIVES

WIN Waste is helping Maryland achieve its Renewable Energy Portfolio Standards and greenhouse gas emissions goals by safely and efficiently converting everyday waste into renewable energy.

On average, WIN Waste Baltimore annually converts 700,000 tons of waste into nearly 400,000 megawatt hours of renewable energy.

That's enough to:



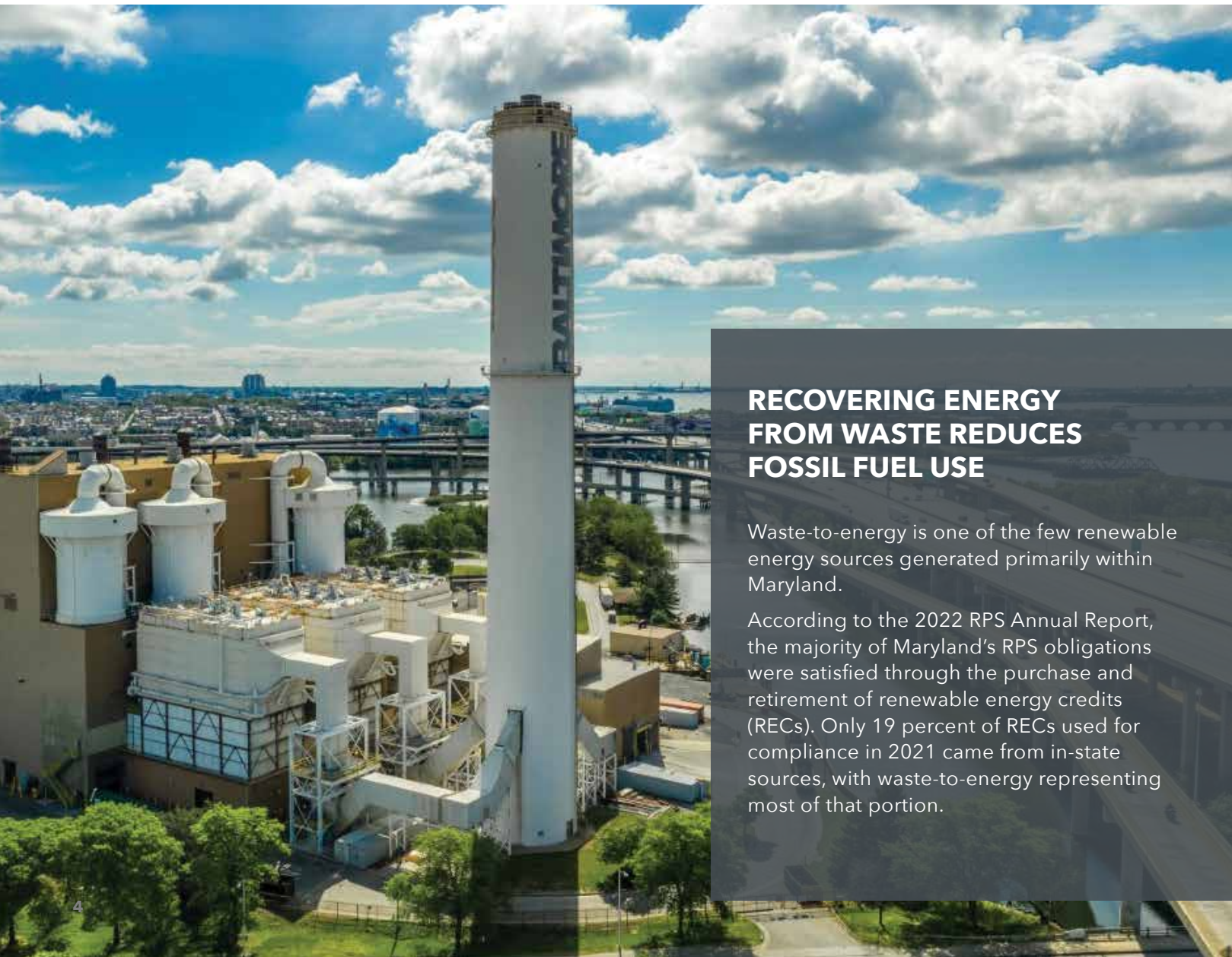
Offset 648K barrels of oil needed to create the equivalent amount of energy



Power the equivalent of 31K+ homes with energy converted from waste



Eliminate thousands of tractor trailer trips to and from landfills



RECOVERING ENERGY FROM WASTE REDUCES FOSSIL FUEL USE

Waste-to-energy is one of the few renewable energy sources generated primarily within Maryland.

According to the 2022 RPS Annual Report, the majority of Maryland's RPS obligations were satisfied through the purchase and retirement of renewable energy credits (RECs). Only 19 percent of RECs used for compliance in 2021 came from in-state sources, with waste-to-energy representing most of that portion.



WIN WASTE COMPLETES \$45 MILLION INVESTMENT IN AIR QUALITY CONTROL UPGRADES

WIN Waste Innovations has completed upgrades to air quality control systems at its waste-to-energy plant in Baltimore. The \$45 million dollar investment helps ensure the plant is one of the lowest-emitting waste-to-energy facilities in the world.

Work on the upgrade began in 2022 and was completed in July 2023. The upgrade includes installation of state-of-the-art equipment and technology that will help WIN Waste keep the plant's emissions well below even the strictest regulations.

"Our emissions levels are already consistently well below U.S. EPA and the even stricter State of Maryland regulations, but in working with city officials, we were asked to do even better. We're proud to confirm we have done just that," says Travis Satiritz, Corporate Maintenance Account Manager at WIN Waste Baltimore.

"We are excited to be at the forefront of waste-to-energy technology," Satiritz says. "Our ongoing investment in air quality means WIN Waste Baltimore will continue to safeguard public and environmental health, while sustainably managing the city's growing amount of waste."

HOW WE SUPPORT THE CITY WE LOVE

WIN Waste Innovations invests nearly \$750,000 in vital Baltimore-based nonprofit organizations each year. These groups share our dedication to making the city and state better places to live and work. Together with our partners, WIN Waste has helped provide youth workforce training, expand urban gardens, remove tons of illegally dumped trash from neighborhoods, and created scores of new green spaces citywide, among many other initiatives.



WIN Waste supports local waste reduction initiatives, including those of the nonprofit 4MyCity. Using WIN Waste's \$50,000 contribution, 4MyCity supplies thousands of low-income families in Baltimore City with biodegradable bags so they can easily compost their food scraps. The compost generated enriches the soil of community gardens throughout the city.



WIN Waste employs local landscaping firm Division Street to build and maintain urban gardens throughout the city of Baltimore.



WIN Waste employees work shoulder to shoulder with thousands of residents across the city to remove more than 2 million pounds of illegally dumped trash and street litter.

52 WEEKS, 100+ CLEANUPS

WIN WASTE HIRES RETURNING CITIZENS TO HELP MAKE THE CITY SHINE



OUR COMMUNITY PARTNERS

- Health Tech Alley
- Challenge2Change
- We Our Us
- Reaching Innocent Children Hearts
- My Father's Plan
- (R.I.C.H) Foundation
- Action Baybrook
- The National Institute of Health's
- Urban Oasis
- 4MyCity
- CEAL DMV
- Arch Social Community Network
- City of Refuge
- Victory Garden
- University of Maryland Medical Center's Office of Community Engagement and Workforce Development
- Pass It On
- Ark Church
- Baltimore Brothers Inc
- Friends of Garrett Park
- YSL - Young Successful Leaders
- S.O.N.S of Phoenix
- Pleasant Beginnings
- Rosemont Neighborhood Improvement Association
- Tendea Family
- Mount Clare Community Council
- Grow Home
- Madeira Street Garden
- Hollins Roundhouse Association



People first: The Occupational Safety and Health Administration (OSHA) designates “Star” sites through its Voluntary Protection Program (VPP). WIN Waste Baltimore is an OSHA-designated “Star” worksite. It is the highest safety rating OSHA bestows, and fewer than one percent of worksites in the United States achieve the designation.

ABOUT WIN WASTE INNOVATIONS

WIN Waste Innovations is a waste management company committed to delivering essential solutions to customers and communities. Its 2,200-strong team operates a platform of 53 strategically located collection, transfer, and disposal assets, including include waste-to-energy facilities, transfer stations, ash monofills, and landfills, as well as fleets of rail cars and collection vehicles, including electric trash trucks. WIN Waste embeds sustainability into every step of the waste handling process – from curbside pickup to the transfer of renewable energy onto the electric grid. By recovering and recycling reusable materials and transforming waste into renewable energy – offsetting the need for fossil fuel – WIN Waste plays a critical role in the sustainability of our planet.

WIN WASTE LOCATIONS

- WtE Facilities (Disposal/Energy) (14)
- ◆ Ash Monofills (4)
- ◆ Landfills (3)
- ▲ Transfer Stations (20)
- Material Recovery Facility (2)
- ▲ Hauling Locations (10)

