



To: The Honorable Chair, Delegate Shane E. Pendergrass, and members of the Health and Government Operations Committee
From: Melissa S. Rock, Birth to Three Strategic Initiative Director
Re.: **HB 548: Human Services - Trauma-Informed Care - Commission and Training**
Date: February 9, 2021
Position: **SUPPORT**

ACEs, or Adverse Childhood Experiences, are a category of early life traumas which negatively impact long-term health, prosperity, and social mobility outcomes.ⁱ ACEs encompass traumatic experiences at all levels of severity and include: emotional, physical, and sexual abuse, emotional and physical neglect, domestic and intimate partner violence, illicit substance use in the home, untreated mental illness in the home, the incarceration of a household member, and the separation and/or divorce of adult caregivers.ⁱⁱ ACEs have the potential to hinder an individual's neurological, socio-behavioral, and emotional development, all of which have repercussions for students' well-being and their ultimate academic success.

ACEs don't target individuals based on race, gender, ability status, sexuality, nationality, socio-economic status, or any of the identity markers we typically use when disaggregating data. The groundbreaking 1998 study found that ACEs are relatively common--**about 67% of survey participants had at least one ACE.**ⁱⁱⁱ Unfortunately, the study also demonstrated that when an individual had more ACEs, the odds of them experiencing negative outcomes like alcohol and substance abuse, depression, adolescent parenthood, and many other issues also increased. Having 3 or more ACEs is typically the threshold for these negative outcomes. More than 40% of Maryland children have at least one ACE—**15.4% have had two or more.**^{iv} Please find the attached ACEs data from the 2018-2019 Maryland Youth Behavioral Risk Survey.^v

Trauma informed services for individuals who are experiencing or have experienced ACEs can help mitigate the negative outcomes associated with ACEs. HB 548's Trauma Informed Commission ensures that our state provide trauma informed services in a coordinated way to Maryland's children and families. It will be incredibly valuable for Commission members to receive ongoing training on trauma, as well, and ACY hopes that education will trickle down to service providers across the State. **ACY urges this committee to issue a favorable report on HB 548 to help improve outcomes for Marylanders who have experiences trauma.**

ⁱ Centers for Disease Control and Prevention:

https://www.cdc.gov/violenceprevention/childabuseandneglect/acestudy/index.html?CDC_AA_refVal=https%3A%2F%2Fwww.cdc.gov%2Fviolenceprevention%2Facestudy%2Findex.html

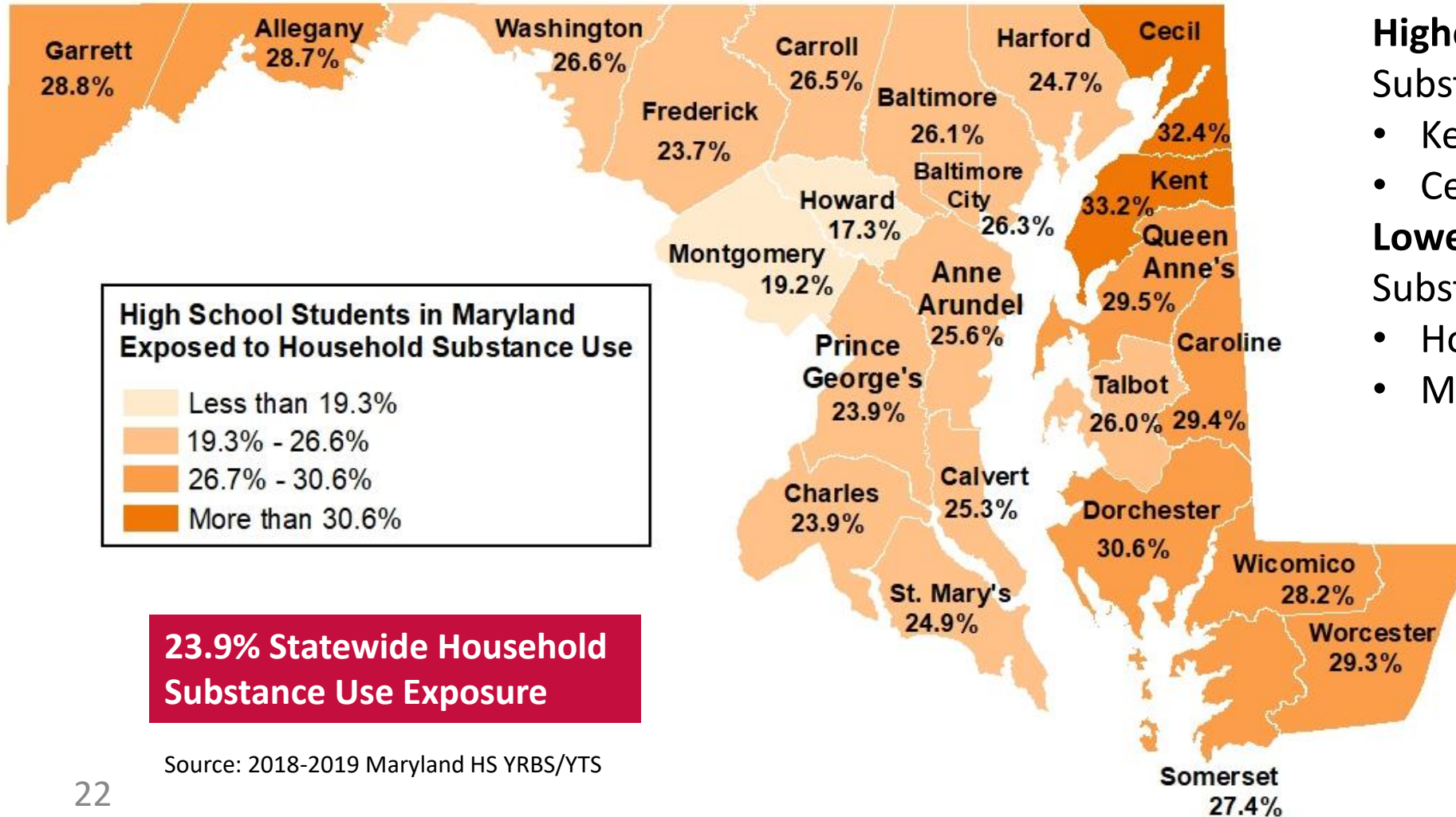
ⁱⁱ Id.

ⁱⁱⁱ Id.

^{iv} Baltimore Sun. *More than 40 percent of Maryland children experience traumatic events.* October 19, 2017.

^v Jallah, Nikardi, MPH, "Adverse Childhood Experiences on the Maryland Youth Risk Behavior Survey/Youth Tobacco Survey (YRBS/YTS) (Frederick & Baltimore City Examples)" presentation to Maryland's State Council on Child Abuse and Neglect, December 3, 2020.

MAP: High School Students Who Have Ever Lived with Anyone Who Was an Alcoholic or Problem Drinker, Used Illegal Street Drugs, Took Prescription Drugs to Get High, or Was a Problem Gambler



Highest Exposure to Household Substance Use

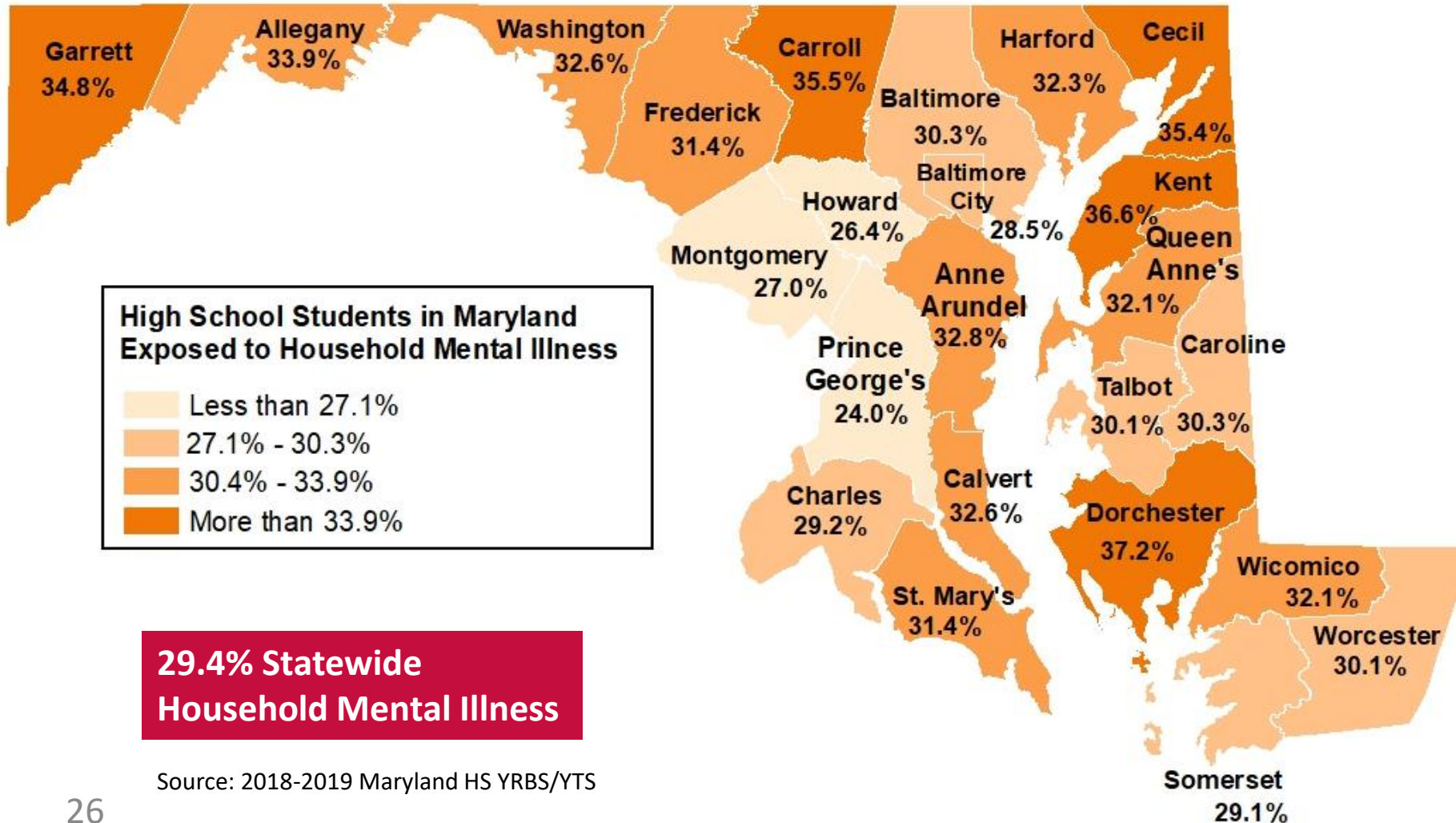
- Kent
- Cecil

Lowest Exposure to Household Substance Use

- Howard
- Montgomery

Source: 2018-2019 Maryland HS YRBS/YTS

MAP: High School Students Who Ever Lived with Anyone Who Was Depressed, Mentally Ill, or Suicidal



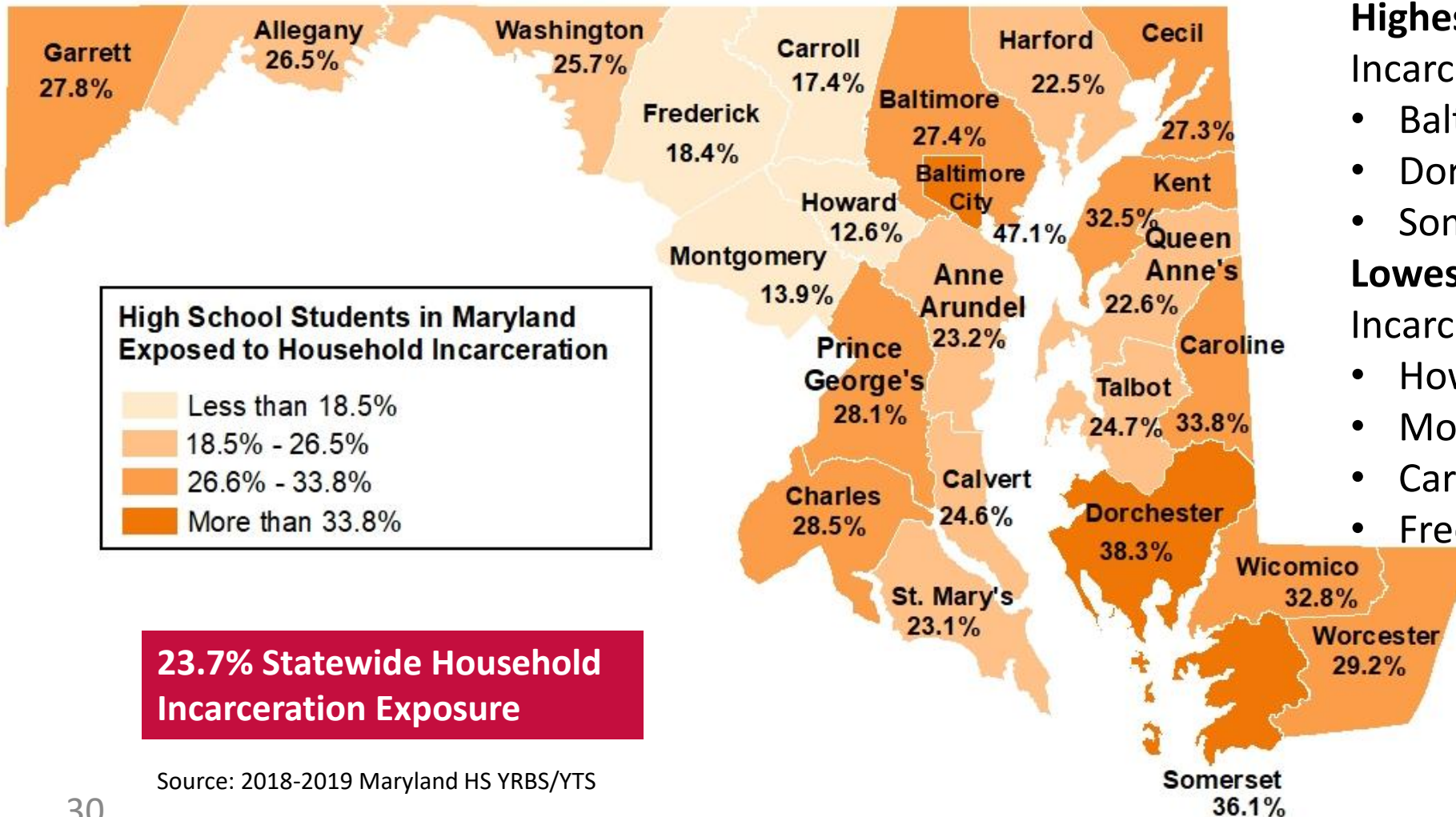
Highest Exposure to Household Mental Illness

- Dorchester
- Kent
- Carroll
- Cecil
- Garrett

Lowest Exposure to Household Mental Illness

- Prince George's
- Howard
- Montgomery

MAP: High School Students Who Reported Someone in Their Household Has Ever Gone to Jail or Prison



High School Students in Maryland Exposed to Household Incarceration

- Less than 18.5%
- 18.5% - 26.5%
- 26.6% - 33.8%
- More than 33.8%

23.7% Statewide Household Incarceration Exposure

Highest Exposure to Household Incarceration

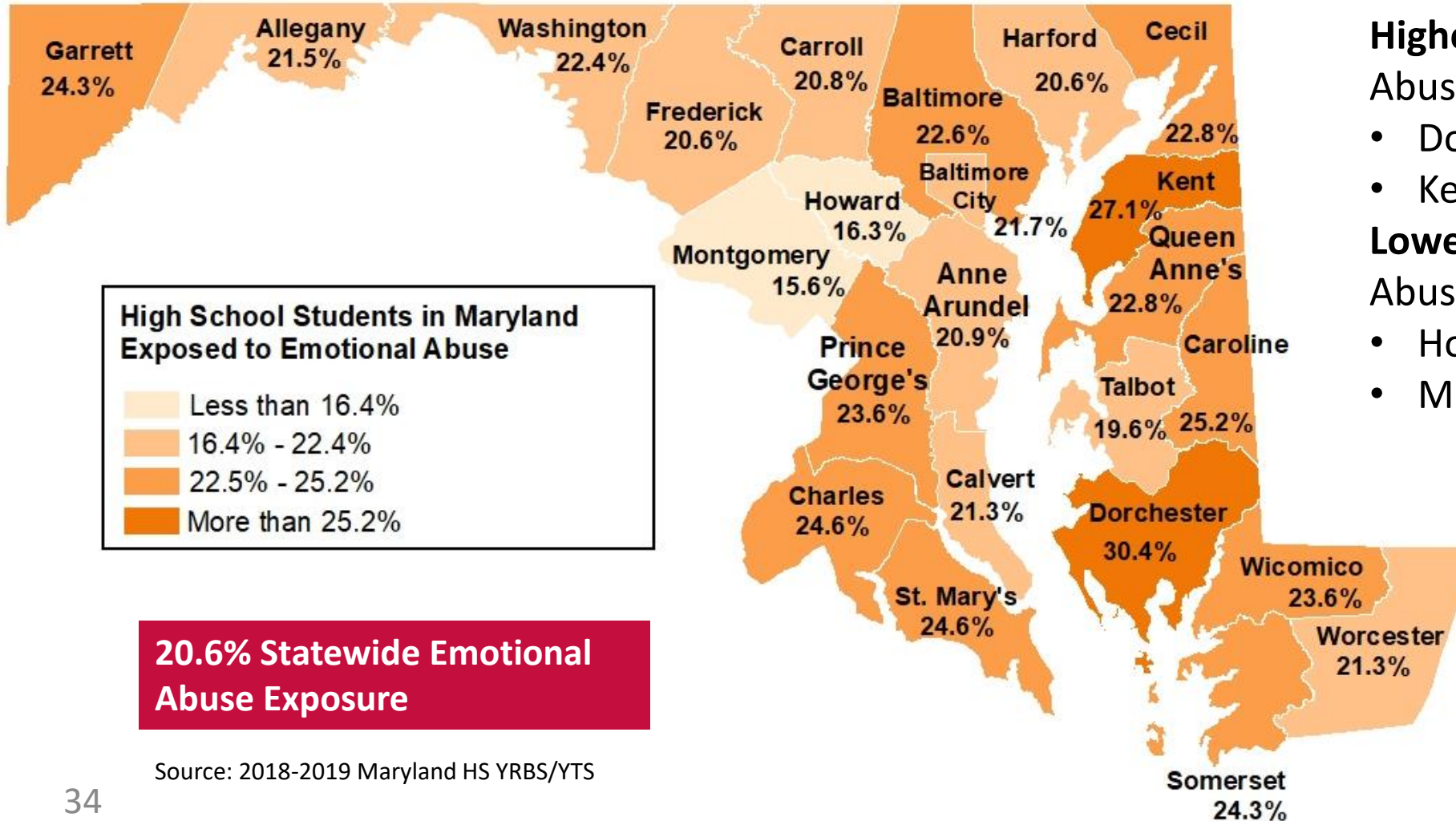
- Baltimore City
- Dorchester
- Somerset

Lowest Exposure to Household Incarceration

- Howard
- Montgomery
- Carroll
- Frederick

Source: 2018-2019 Maryland HS YRBS/YTS

MAP: High School Students Who Reported a Parent or Other Adult in Their Home Regularly Swears at Them, Insults Them, or Puts Them Down



Highest Exposure to Emotional Abuse

- Dorchester
- Kent

Lowest Exposure to Emotional Abuse

- Howard
- Montgomery

20.6% Statewide Emotional Abuse Exposure

Source: 2018-2019 Maryland HS YRBS/YTS

