

COMMISSIONERS FOR SOMERSET COUNTY

11916 SOMERSET AVENUE, ROOM 111
PRINCESS ANNE, MARYLAND 21853
TELEPHONE 410-651-0320, FAX 410-651-0366

COMMISSIONERS

CRAIG N. MATHIES, SR., PRESIDENT
CHARLES LAIRD, VICE-PRESIDENT
REX SIMPKINS
ELDON WILLING
RANDY LAIRD



COUNTY ADMINISTRATOR-CLERK
RALPH D. TAYLOR

COUNTY ATTORNEY
KIRK G. SIMPKINS

January 24, 2022

The Honorable Nancy J. King, Chair
Reapportionment and Redistricting Committee
Annapolis, MD 21401

Re: SB0270/HB289-Somerset County -Elections-County Commissioners
Districts and Board of Education Candidate Filings/Letter of Support

Dear Senator King and Committee Members:

The Board of County Commissioners for Somerset County strongly support SB0270/HB289. A Redistricting Committee was formed, and public meetings were held on October 7 and 14, 2021. During these meetings, the Somerset County Redistricting Committee reviewed the information gathered by the 2020 Census, and discussed the different scenarios to bring all five Commissioner Districts within the 5% +/- ratio.

At the conclusion of the meetings, consensus was received by the Redistricting Committee to propose Map 1aa to the Somerset County Commissioners (see attached).

A Public Hearing was held to receive citizen comment on November 9, 2021. During the Public Hearing, only favorable testimony was received and the county was highly commended for its transparency and the overall handling of the process. The Board of Commissioners unanimously approved Map 1aa during their meeting held on November 23, 2021 with the passage of Resolution No. 1173.

Therefore, we as Somerset County Commissioners request for a favorable report and final passage of SB0270/HB289. Thank you for your kind consideration.

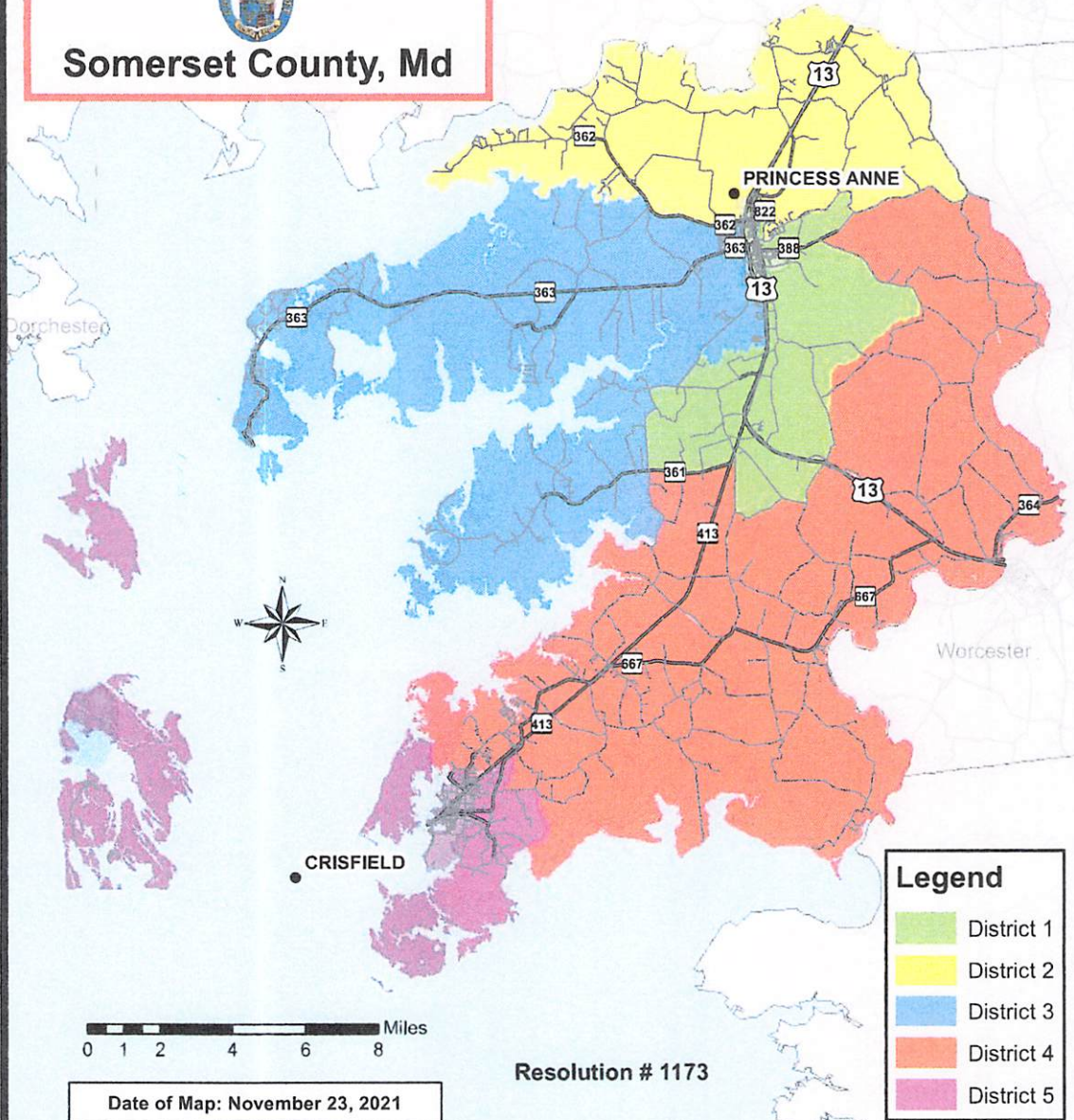
Sincerely,

Ralph D. Taylor
County Administrator

County Commissioner Districts



Somerset County, Md



Legend

- District 1
- District 2
- District 3
- District 4
- District 5

Resolution # 1173

Date of Map: November 23, 2021

