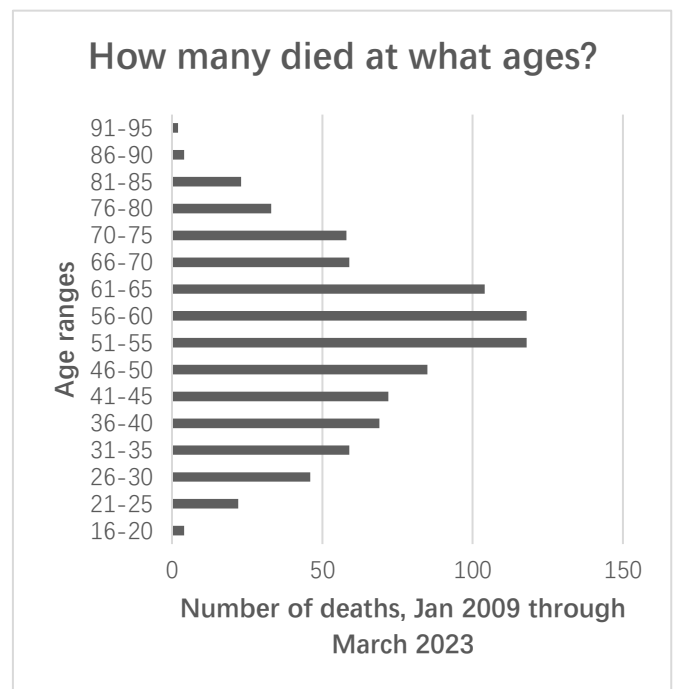
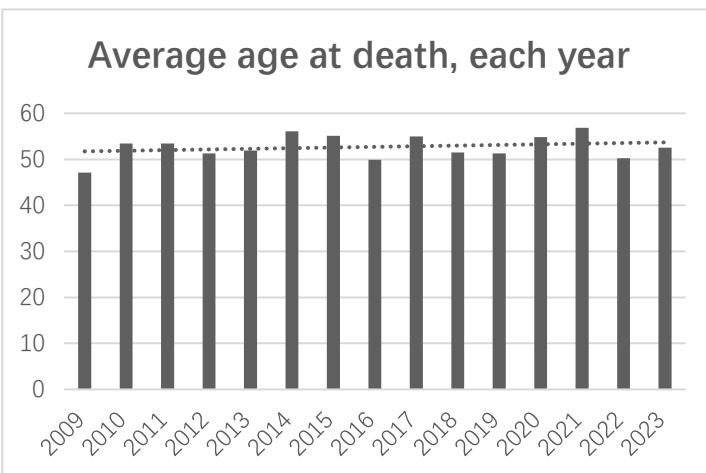


Chairman Clippinger and Members of the House Judiciary Committee, please consider the following facts and support House Bill 565.

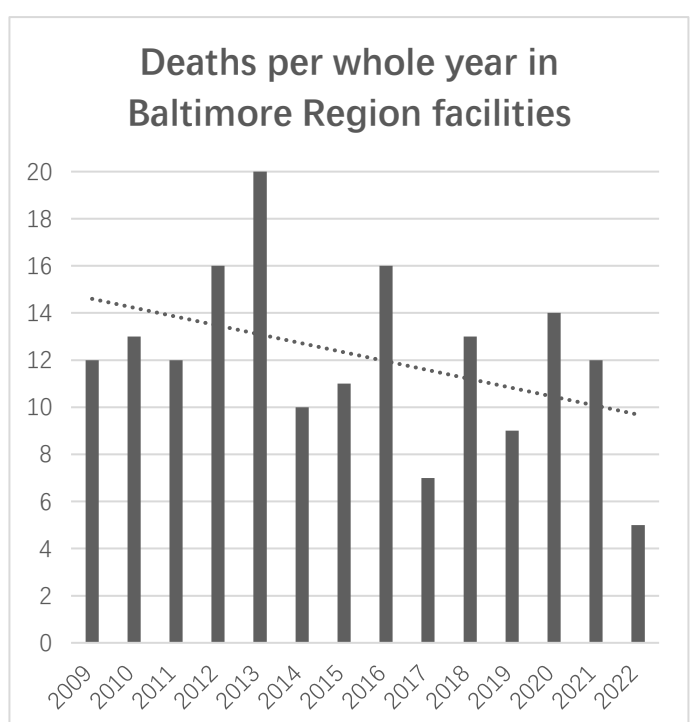
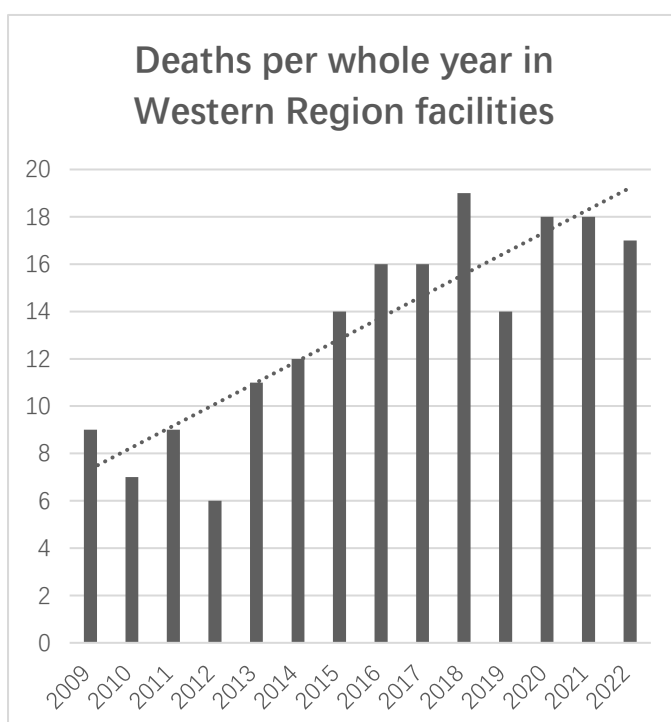
Facts about Deaths in Maryland Prisons, 2009-2023

DPSCS recently released its list of 884 deaths in their custody from January 1, 2009, through March 28, 2023. Here are some findings based on that list and total facility population figures from DOC/DPSCS Annual Reports online, looking mainly at the whole years 2009-2022. Trendlines are calculated by Excel. Download all DPSCS data and our full calculations at <https://tinyurl.com/DPSCS-mortality>.

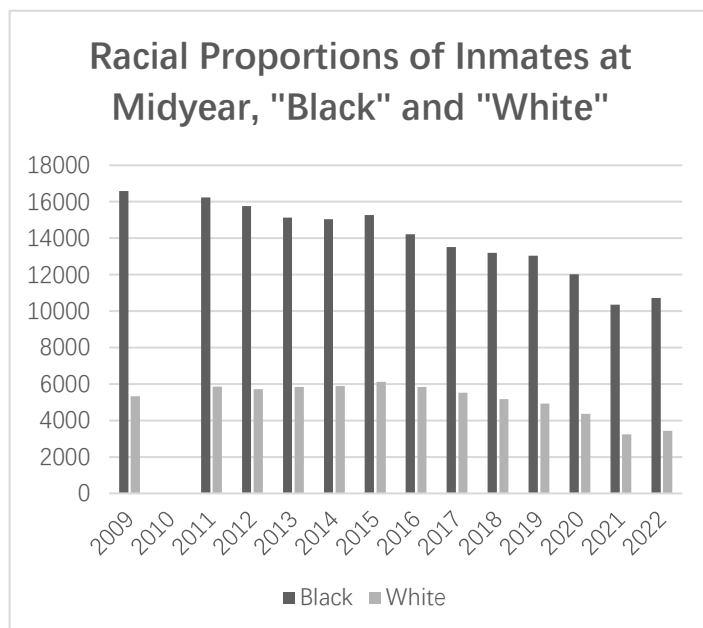
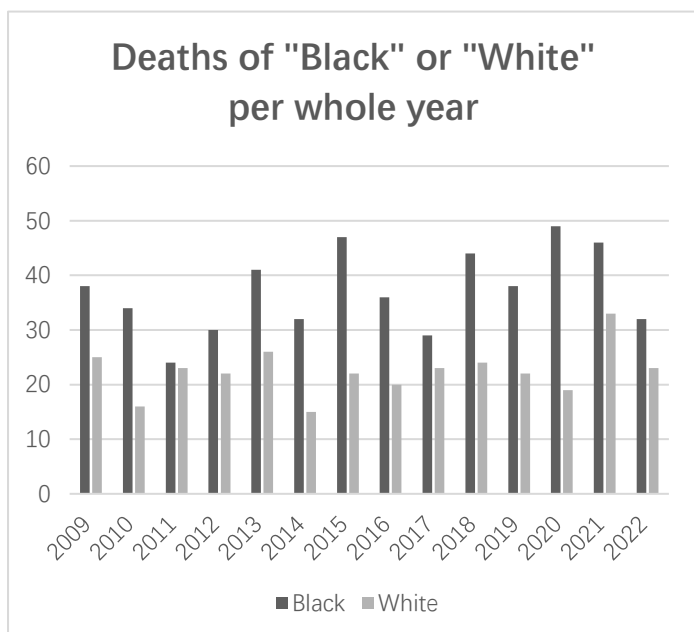
Age at the time of death in custody.



Some regions are doing a better job than others. For example:



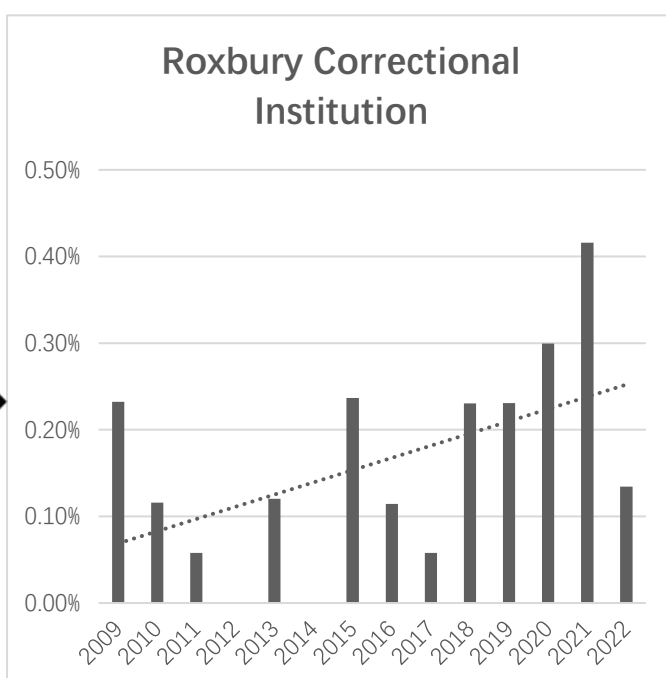
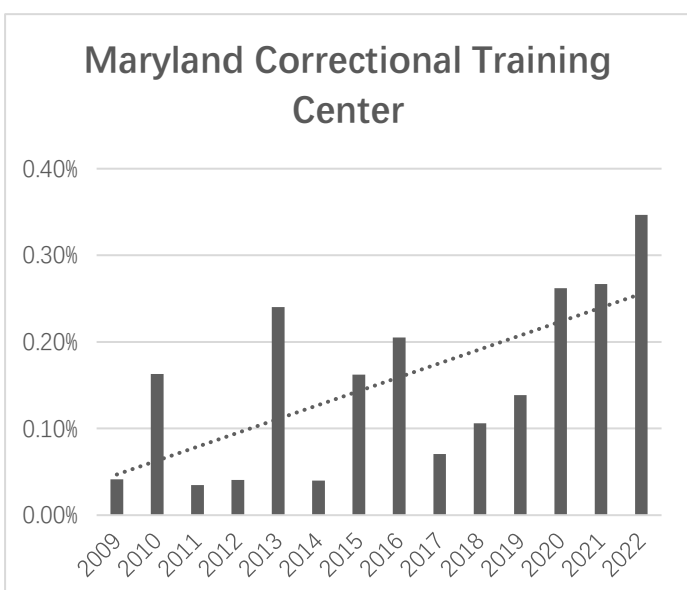
“White” inmates have a higher mortality rate than “Black” inmates.



Mortality at most prisons is rising fast.

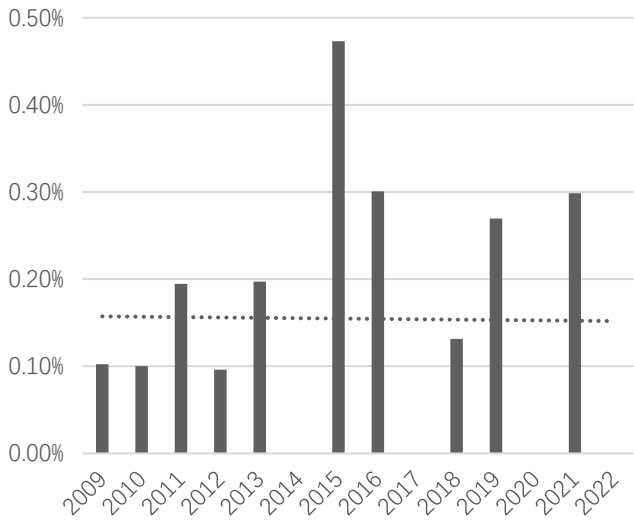
What percentage of a prison’s population die, each year? Here are the mortality rates for the state facilities for which we have good numbers, for the 14 full years from 2009 through 2022, based on individual deaths reported by DPSCS, and midyear resident populations for the facilities given in DOC/DPSCS annual reports.

For comparison, the Bureau of Justice Statistics says¹ the annual mortality rate among all state and federal prisoners in 2001-2018 was 0.23%, marked by this sign **◆** below. Charts are on the same scale.

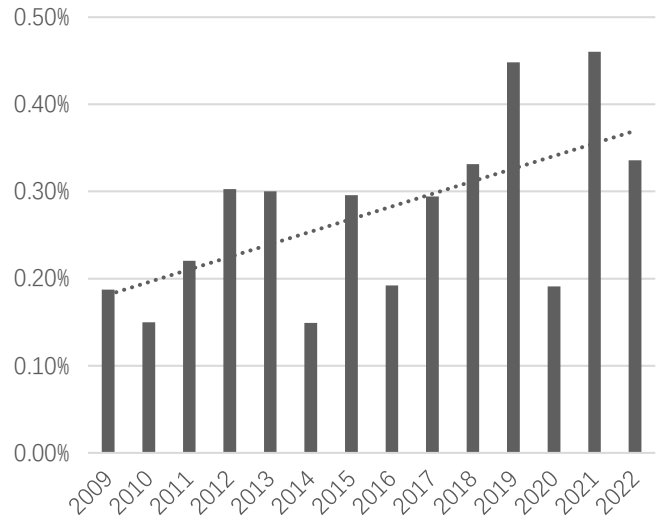


¹ <https://bjs.ojp.gov/content/pub/pdf/msfp0118st.pdf>

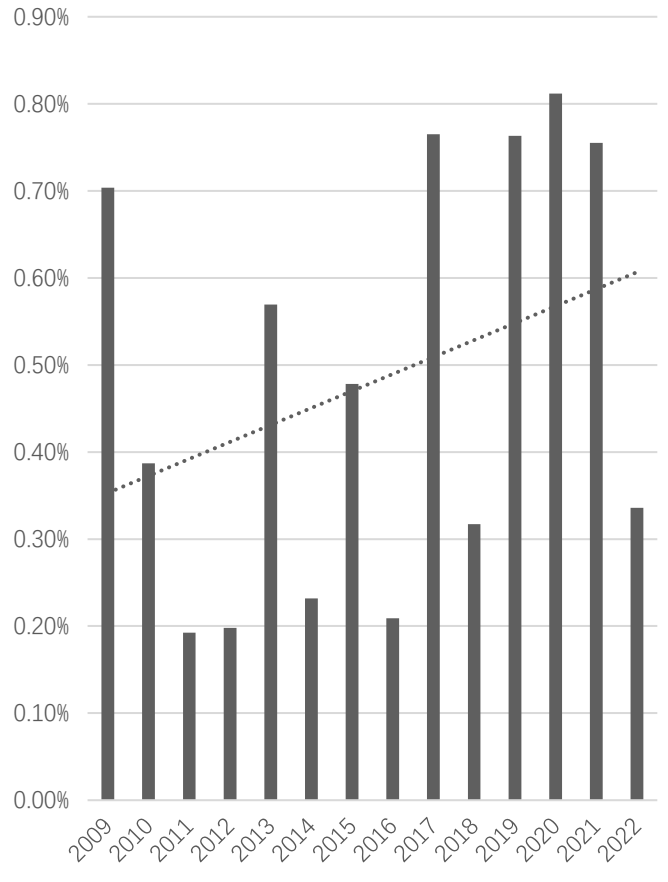
Maryland Correctional Institution - Jessup



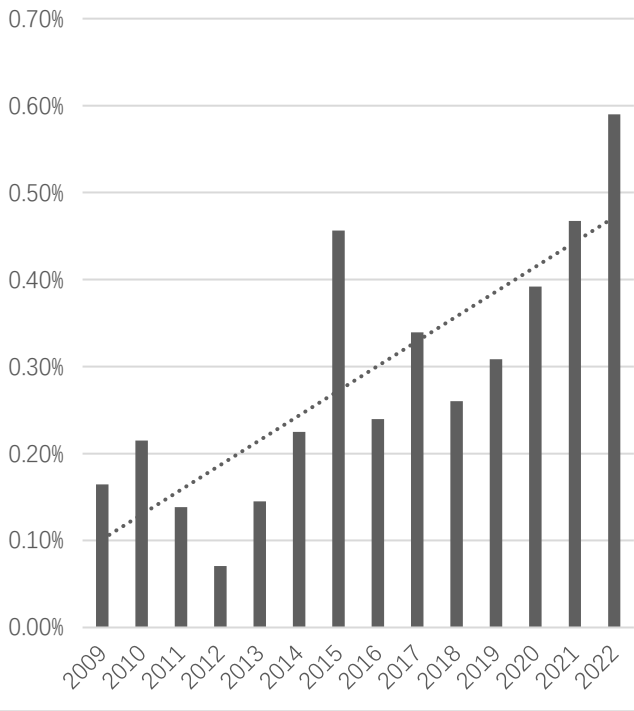
Eastern Correctional Institution (East and West)

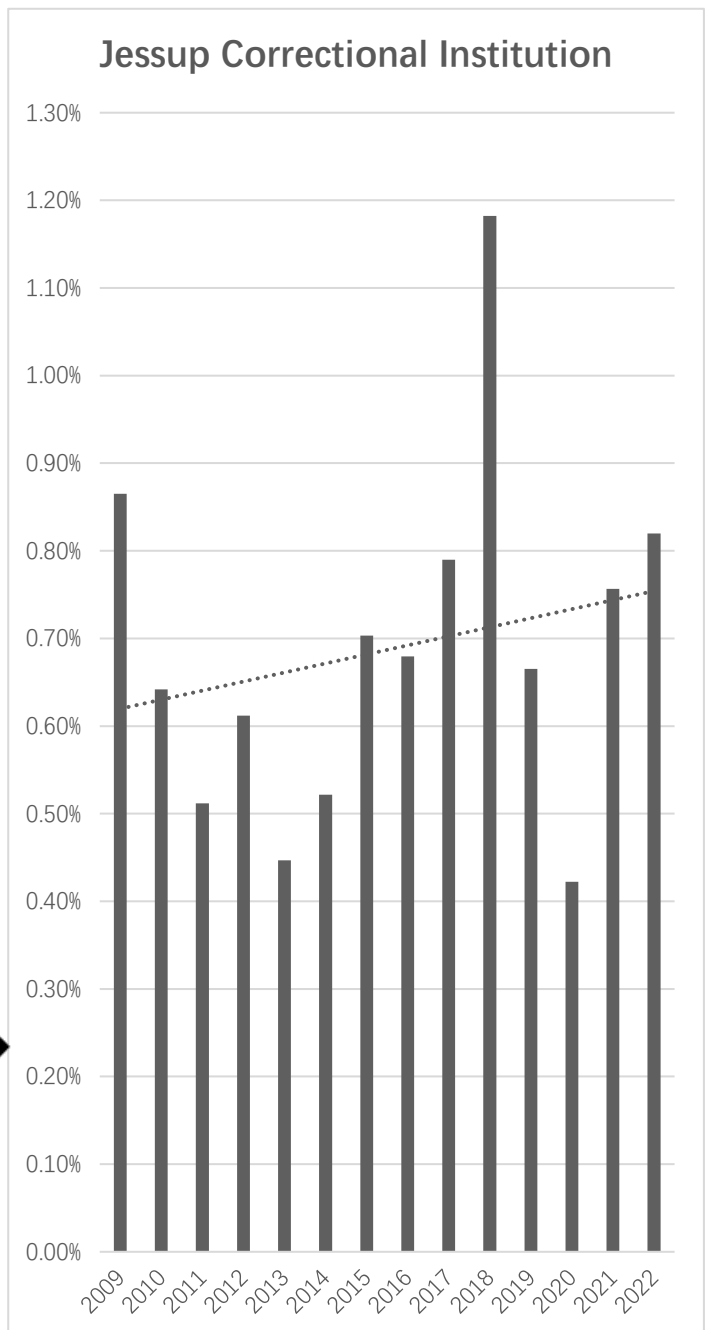
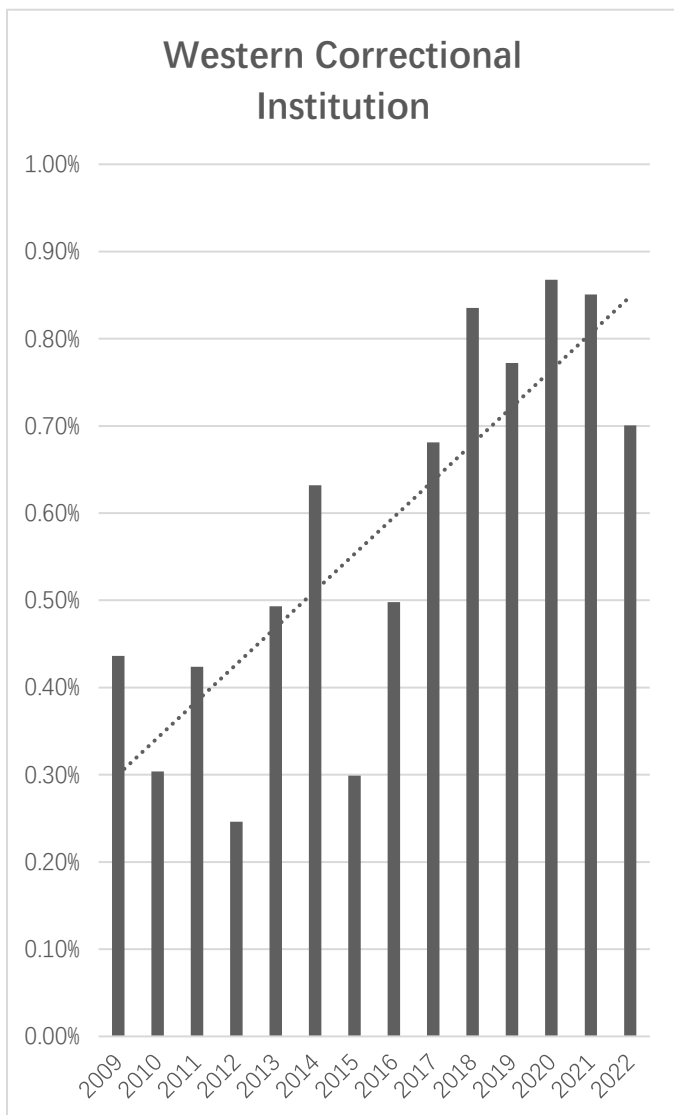


Maryland Correctional Institution - Hagerstown



North Branch Correctional Institution





Changes over time suggest that facilities' actions influence death rates.

Essential mortality factors highly responsive to DPSCS employee actions and polices include:

- Quality and quantity of nutrition
- Heating in winter, cooling in summer
- Ventilation and air filtration
- Sanitation, and hygiene supplies
- Lessening of stress and boredom
- Adequate communication with loved ones

- Realistic access to medical care
- Real medical care
- Protection from violence
- Separation of the contagious
- Avoidance of solitary confinement, especially for the mentally ill

Thank you for your consideration.

Respectfully submitted,

William A. Haines