



SafeRoadsMD

PLEASE SUPPORT SB 175
“City of Cumberland - Speed Monitoring
Systems - Tractor Trailers on Interstate 68”

MARYLAND COALITION FOR ROADWAY SAFETY, INC. URGES MD SENATE JPR COMMITTEE SUPPORT FOR SB 175

January 26, 2026

TO:

Honorable Senator William C. Smith, Chair
Honorable Senator Jeff Waldstreicher, Vice Chair
Judicial Proceedings Committee
Maryland General Assembly
2 East Miller Senate Office Building
Annapolis, Maryland 21401

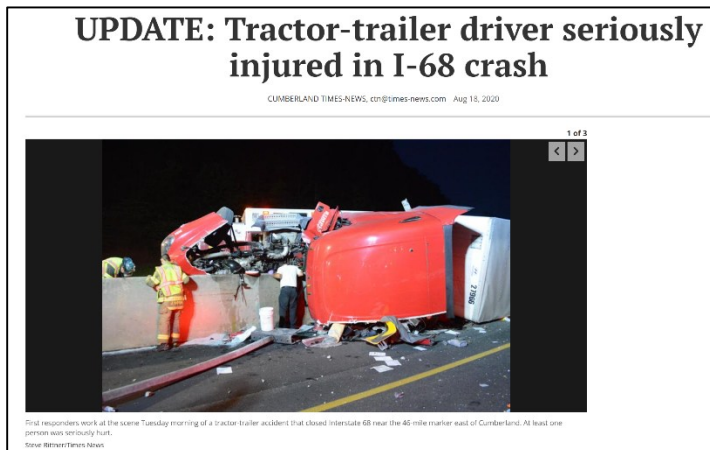
FROM:

John Seng, Chair
SafeRoadsMD - Maryland Coalition for Roadway Safety, Inc.
(202) 468-7682, JSeng@SafeRoadsMD.org
SafeRoadsMD.org

Subject: Asking Your Support for SB 175 “City of Cumberland - Speed Monitoring Systems - Tractor Trailers on Interstate 68”

Dear Chair Smith, Vice Chair Waldstreicher and Members of the Maryland Senate Judicial Proceedings Committee:

On behalf of **SafeRoadsMD**, a statewide coalition dedicated to reducing serious injuries and fatalities on Maryland roads, we write to **strongly support Senate Bill 175** and urge the Committee to issue a **favorable report**.



SB 175 authorizes the **City of Cumberland** to use speed monitoring systems on limited portions of **Interstate 68** to enforce existing speed limits **only for tractor-trailer combinations**. This is a narrow, carefully written bill that addresses a real and well-documented safety concern: **heavy trucks traveling at unsafe speeds through a constrained, mountainous interstate corridor**.

Maryland Coalition for Roadway Safety, Inc.
2127 Regina Terrace, Clarksburg, MD 20871 (202) 468-7682

Interstate 68 through Cumberland presents unique risks. Steep grades, sharp curves, changing weather conditions, and close proximity to residential areas mean that excessive speed by large commercial vehicles dramatically increases stopping distances, crash severity, and the likelihood of catastrophic outcomes. When tractor-trailers speed in this environment, the consequences are not theoretical—they are often fatal.

SB 175 is notable for what it **does and does not do**.

First, it is **highly targeted**. The bill:

- Applies **only within the City of Cumberland**;
- Applies **only on portions of I-68 with posted speed limits of 45 mph**; and
- Applies **only to Class F tractor vehicles operated with Class G freight trailers or semitrailers**.

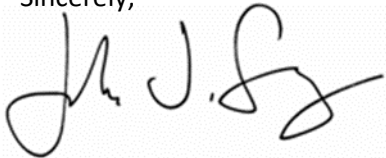
Passenger vehicles are not affected. No new categories of drivers are swept in. This is precision enforcement focused on the vehicles that pose the greatest risk when speeding. Next, SB 175 maintains Maryland's long-standing guardrails around automated enforcement. Existing thresholds remain in place, citations are issued only for speeds 12 mph or more above the limit, and standard defenses and due-process protections continue to apply. Importantly, the bill explicitly allows drivers to contest citations by showing that the vehicle was not a qualifying tractor-trailer combination, reinforcing fairness and accuracy. Finally, the bill makes clear that this is not a revenue measure. Any net fine revenue must be used for public safety programs, transportation improvements, and maintenance within the I-68 corridor—ensuring that funds are reinvested directly into the roadway where the violations occur.

From a safety perspective, SB 175 reflects best practices. Automated enforcement is most effective when it is **visible, predictable, and focused on the most dangerous behaviors in the highest-risk locations**. Slowing heavy trucks on I-68 will reduce crash severity, protect nearby neighborhoods, and improve safety for all road users—truck drivers included.

SafeRoadsMD believes SB 175 strikes the right balance between enforcement, fairness, and accountability. It empowers a local jurisdiction to address a specific safety hazard with a tool that is proven, limited, and transparent.

For these reasons, we respectfully urge the **Judicial Proceedings Committee to issue a favorable report on SB 175**. We appreciate your leadership on roadway safety and stand ready to provide any additional information that may be helpful.

Sincerely,



John J. Seng
Chair
Maryland Coalition for Roadway Safety, Inc.

cc: Sen. McKay; SafeRoadsMD Board Members