

HB 363_Poverty Free MD_FAV.pdf

Uploaded by: Abby Snyder, Co-Chair

Position: FAV



POVERTY FREE MARYLAND Testimony in Support of HB 363

Income Tax – Local Child Tax Credit, Authorization

Ways and Means Committee
February 12, 2026

Voting Member Agencies:

Anne Arundel County Food Bank

Baltimore Jewish Council

CASH Campaign of Maryland

Catholic Charities

Family League of Baltimore

Laurel Advocacy & Referral Services,
Inc.

Maryland Center on Economic Policy

Maryland Family Network

Maryland Food Bank

Maryland Hunger Solutions

Poverty Free Maryland

Poverty Free Maryland supports HB 363, which allows local governments to create a match for the Maryland Child Tax Credit (CTC). The CTC helps make the cost of raising children more affordable for families by offsetting the federal income tax they owe or, if the value of the credit exceeds the tax they owe, by providing part or all of the credit in the form of a refund. It is a proven, powerful tool that reduces poverty for millions of Americans each year. Adding a local credit, on top of the existing state and federal credits, would help boost incomes for the lowest-income households in the state.

Maryland's state Child Tax Credit is targeted to the lowest income households, helping to [bridge a gap left by federal policy](#). Families earning less than \$30,000 to \$45,000 (depending on filing status and the number of children) do not receive the full federal CTC, and those with income under \$2,500 don't receive the federal credit at all.

Maryland's credit covers families that federal policy does not. Families with income up to \$15,000 receive a \$500 refundable tax credit per child under age 6 or an older child who has a disability. Those with incomes up to \$24,000 would receive a partial credit. HB 363 would give local governments the ability to provide a local match to the state credit. **The CTC has been linked to greater educational outcomes, improved health, and higher earnings later in life for the children** whose families benefitted from the increased economic stability the credit provides.

Maryland already has a successful model for a similar local refundable tax credit for working families. Local governments can already offer a local match to the state Earned Income Tax Credit. Montgomery County's Working Families Income Supplement now boosts incomes for tens of thousands of low-income county residents each year. The county is able to adjust the percentage match of the state credit annually to reflect local budget.

MAP appreciates your consideration and urges a favorable report for HB 363.

*Founded in 2025 through the merger of Welfare Advocates (established in 1979) and Marylanders Against Poverty (established in 1988), **Poverty Free Maryland** is a coalition of service providers, faith groups, and other organizations working together to exchange information, educate decisionmakers, and advocate for statewide public policies and programs necessary to address the underlying systemic causes of poverty and ensure that low-income Marylanders are provided with low- and no-barrier access to all resources needed to thrive and build a better life for the future.*

Abby Snyder, Co-Chair

P: (240) 593-6121

E: ASnyder@baltjc.org

Anne Wallerstedt, Co-Chair

P: (410) 991-7285

E: AWallerstedt@mdfoodbank.org

HB 363 tax credit feb 12 2026 pdf.pdf

Uploaded by: Christina Peusch

Position: FAV



**Caring For Maryland's Most
Important Natural Resource™**

Maryland State Child Care Association

2810 Carrollton Road
Annapolis, Md. 21403
Phone: (410) 820-9196
Email: info@mscca.org
www.mscca.org

The Maryland State Child Care Association (MSCCA) is a non-profit, statewide, professional association incorporated in 1984 to promote the growth and development of child care and learning centers in Maryland. MSCCA has over 5500 members working in the field of child care/early childhood education. We believe children are our most important natural resource and work hard to advocate for children, families and for professionalism within the early childhood community.

Testimony: HB 363: Income Tax- Local Child Tax Credit- Authorization

Submitted to: The Way and Means Committee

February 12, 2026

Maryland State Child Care Association enthusiastically supports HB 363 as MSCCA believes tax credits play a role in helping families maintain economic stability.

Enabling a local Child Tax Credit is an effective strategy to reduce child poverty and contribute to alleviating financial stress for families.

These credits directly increase disposable income for essentials like food, rent, and childcare, supporting workforce participation and long-term child development.

There are numerous benefits to a local Child Tax Credit including lifting families out of poverty. The credits act as a safety net for eligible families, helping to reduce some cost of living, the credits enable parents to afford things like child care and remain in the workforce.

Unlike programs with specific restrictions, tax credits offer flexibility, allowing families to use funds for their most urgent needs, such as diapers, utilities, or rent.

Increased economic security via tax credits is linked to better health, education, and long-term development for children.

Passing HB 363 to enable child tax credit in combination with state or federal programs, provides a targeted approach to tackling the specific economic, child care, and cost-of-living challenges within a community.

MSCCA requests a favorable report.

HB 363 - Letter of Support

Uploaded by: Delegate Dana Jones

Position: FAV

DEL. DANA JONES, DISTRICT 30A
President

DEL. MICHELE GUYTON, DISTRICT 42B
1st Vice-President

DEL. JENNIFER WHITE HOLLAND, DISTRICT 10
2nd Vice-President

DEL. SARAH WOLEK, DISTRICT 16
Secretary



DEL. LINDA FOLEY, DISTRICT 15
Treasurer

DEL. KAREN R. TOLES, DISTRICT 25
Parliamentarian

DEL. JACQUELINE T. ADDISON, DISTRICT 45
At Large

DEL. KYM TAYLOR, DISTRICT 23
At Large

WOMEN LEGISLATORS OF MARYLAND
THE MARYLAND GENERAL ASSEMBLY

February 11, 2025

To: Delegate Jheanelle K Wilkins, Chair

Delegate Jessica Feldmark, Vice Chair

Ways and Means Committee

The Maryland Women's Caucus is proud to express its support for **HB 363 – Income Tax – Local Child Tax Credit**.

HB 363 authorizes counties to establish, by local law, a credit against the county income tax for certain dependent children. This legislation provides meaningful financial relief to families navigating the significant costs associated with raising children. By allowing counties to implement a local child tax credit, this bill empowers local governments to directly support working families in their communities.

Maryland families are facing rising costs for housing, healthcare, childcare, and utilities. For many households, particularly those led by women, these expenses create financial strain that affects long-term stability and opportunity. A local child tax credit would help offset these costs, reduce food insecurity, improve housing stability, and create additional room in family budgets for savings and future planning.

Maryland is consistently ranked among the most expensive states in which to raise a child, with annual costs reaching tens of thousands of dollars per dependent. HB 363 is a practical and locally flexible approach to easing that burden. By reducing county income tax liability for families with qualifying dependent children, this legislation supports economic security and promotes healthier outcomes for children and caregivers alike.

This bill aligns directly with the Maryland Women's Caucus's mission to advance policies that strengthen women, children, and families across the State. Financial stability for families translates into stronger communities, improved educational outcomes, and greater long-term economic mobility.

For these reasons, the Maryland Women's Caucus respectfully urges a favorable report on **HB 363**.

Delegate Palakovich Carr - HB 363 - Testimony.pdf

Uploaded by: Julie Palakovich Carr

Position: FAV

JULIE PALAKOVICH CARR
Legislative District 17
Montgomery County

Ways and Means Committee
Chair, Revenues Subcommittee

Chair, Montgomery County
House Delegation



The Maryland House of Delegates
6 Bladen Street, Room 202
Annapolis, Maryland 21401
410-841-3037
800-492-7122 Ext. 3037
Julie.PalakovichCarr@house.maryland.gov

THE MARYLAND HOUSE OF DELEGATES
ANNAPOLIS, MARYLAND 21401

**Testimony in Support of HB 363
Local Child Tax Credit – Authorization**

This bill would enable counties and the City of Baltimore to establish a local Child Tax Credit to help families in need in their community. The bill grants local governments flexibility to set the credit amount while streamlining the administration by mirroring the eligibility criteria for the existing Maryland Child Tax Credit.

Childhood Poverty Hurts Kids and Our Economy

Childhood poverty remains a pressing challenge in Maryland with 11 percent of Maryland children living in poverty,¹ leaving one in three children in households struggling to afford food or housing.² Children who grow up in poverty face lifelong disadvantages, including poorer health outcomes, lower educational attainment, and reduced earnings in adulthood.³

Encouragingly, research shows that targeted financial support can change these trajectories. Studies demonstrate that increasing a low-income family's income by even a few thousand dollars per year leads to measurable improvements in children's educational achievement, health, and future earnings.⁴ The National Academy of Sciences has recommended expanding child tax credits as a cornerstone strategy to cut child poverty in half nationwide.³

The Potential of Local Child Tax Credits

¹ Kids Count Data Center, Annie E. Casey Foundation, data for 2023

² "Left Behind: The One-Third of Children in Families Who Earn Too Little to Get the Full Child Tax Credit," 2019, Columbia University Center on Poverty and Social Policy

³ "A Roadmap to Reducing Child Poverty," 2019, National Academies of Sciences, Engineering, and Medicine

⁴ "Early-Childhood Poverty and Adult Attainment, Behavior, and Health," 2010, Child Development (Society for Research in Child Development)

A recent analysis underscores the transformative potential of local child tax credits.⁵ The 2025 report found that in most cities, a local credit of \$1,000 or less per child could reduce child poverty by 25 percent, and credits of \$3,000 to \$4,000 could cut poverty in half. Baltimore was among the cities examined and the findings show that a local child tax credit could meaningfully reduce poverty rates when combined with federal and state credits. These results indicate that local credits could be highly effective in addressing child poverty.

Maryland's Child Tax Credit

In 2021, the General Assembly established the Maryland Child Tax Credit to help low-income families with children. The \$500 tax credit was initially limited to families earning \$6,000 or less and who have a child with a disability; the credit was temporary through tax year 2022. In 2023, the legislature made the credit permanent and expanded eligibility to include families making up to \$15,000 annually and added all children under the age of six years. A second expansion in 2025 allowed families earning up to \$24,000 a year to qualify.

This expansion was a crucial step toward reducing child poverty in our state, but the needs of families vary across Maryland. Local governments need to have the flexibility to strengthen support for children in their communities.

What This Bill Does

This bill authorizes counties and the City of Baltimore to enact their own local Child Tax Credit by mirroring the eligibility requirements of the Maryland Child Tax Credit. Counties would have the flexibility to determine the amount of the credit, while maintaining statewide uniform rules for family income and child age. The bill directs the Comptroller's Office to administer the credit, consistent with existing local income tax credits such as the county Earned Income Tax Credit.

By enabling local governments to enact their own Child Tax Credit, we give counties the ability to respond to the unique needs of their residents. This bill furthers Maryland's commitment to reducing child poverty, supports working parents, and invests in the future of our children.

⁵ "The Potential of Local Child Tax Credits to Reduce Child Poverty," 2025, Columbia University Center on Poverty and Social Policy and Institute on Taxation and Economic Policy

The-Potential-of-Local-Child-Tax-Credits-to-Reduce

Uploaded by: Julie Palakovich Carr

Position: FAV



The Potential of Local Child Tax Credits to Reduce Child Poverty

October 2025

This report was authored by Ryan Vinh, Kamolika Das, Sophie Collyer, Aidan Davis, David Harris, Galen Hendricks, Rita Jefferson, Yajun Jia, Danielle Wilson, and Christopher Wimer. The analyses were conducted by the Center on Poverty and Social Policy at Columbia University and the Institute on Taxation and Economic Policy, with support from Share Our Strength.

About the Institute on Taxation and Economic Policy

ITEP is a non-profit, non-partisan tax policy organization. We conduct rigorous analyses of tax and economic proposals and provide data-driven recommendations on how to shape equitable and sustainable tax systems. ITEP's expertise and data uniquely enhance federal, state, and local policy debates by revealing how taxes affect people at various levels of income and wealth, and people of different races and ethnicities.

About the Center on Poverty and Social Policy at Columbia University

The Center on Poverty and Social Policy at Columbia University produces cutting-edge research to advance our understanding of poverty and the role of social policy in reducing poverty and promoting opportunity, economic security, and individual and family wellbeing. The center's work focuses on poverty and social policy issues in New York City and the United States.

About Share Our Strength

At Share Our Strength we're helping kids, families and communities through our No Kid Hungry campaign – and working on the root causes of hunger to create more financial security for families.

KEY FINDINGS

- Child poverty rates in cities across the country sit well above the national average. In the 14 cities selected for this study, 10 have child poverty rates exceeding 15 percent and six have child poverty rates above 20 percent, even after accounting for the role of federal and state Child Tax Credits in reducing poverty.
- Local governments can create their own Child Tax Credits to supplement the poverty-reducing effects of federal and state credits and meaningfully reduce child poverty in their cities.
- With the exception of Los Angeles and Oakland, a base credit of \$1,000 or less would be sufficient to reduce child poverty by 25 percent across the remaining localities in this study.
- In 10 of these 14 cities, a credit that would reduce poverty by 25 percent when combined with federal and state credits costs less than 3 percent of the city's revenues. In most of the cities examined, costs for achieving a 50 percent poverty reduction are less than 15 percent of the city's governmental revenues, and in three of those cities, the total cost is 5 percent or less.
- With a local Child Tax Credit of ~\$4,000 per child or less, 12 of 14 localities in this study could cut child poverty by 50 percent through the combined effects of federal, state, and local credits. In seven of the cities, the same reduction could be achieved with a credit of ~\$3,000 per child or less.
- Local costs for achieving a 50 or 25 percent poverty reduction are much lower for cities in states with robust state Child Tax Credits, such as Minnesota. For example, it would cost Minneapolis less than \$30 million to cut its baseline poverty levels by half when accounting for state and federal credits.
- Similarly, the local costs of achieving a 50 percent poverty reduction would be markedly lower if the federal Child Tax Credit was expanded as it was in 2021, and if children in lower- and moderate-income families were eligible for the full increased federal credit.

Poverty reductions of the type that could be achieved with the policies suggested in this paper would transform the lives of families with children in American cities.

Introduction

After falling to a record low of 5.2 percent in 2021, child poverty has since surged back to pre-pandemic levels, reaching 13.4 percent in 2024.¹ Child poverty hit its record low in 2021 due to concerted policy choices, namely the expansion of the Child Tax Credit, Economic Impact Payments, and other pandemic-related income supports. As these income supports expired, however, high levels of child poverty reemerged.

As proven in 2021, high levels of child poverty are preventable. Federal and state policies continue to reduce child poverty, but there is more that could be done. Since the expiration of the federal Child Tax Credit expansion in 2022, many states have expanded or created their own credits to help parents afford the costs of raising children. Fifteen states currently provide Child Tax Credits. These vary widely in their design and reach, but they all embody a commitment to helping families with children through the tax code.^{2,3}

Yet the combination of existing federal and state credits only do so much to reduce child poverty and help families with their costs of living. Local governments can build on federal and state policy, driving more substantial reductions in child poverty.⁴ To date, no city has implemented its own Child Tax Credit. This report documents how local credits could further reduce child poverty and enhance families' economic security.

Our results suggest that complementing federal and state programs with local child tax credits could substantially reduce child poverty. The options examined in this report also provide the largest gains (as a share of income) to families at the bottom of the income scale, with the bulk of the benefit going to families in the bottom 80 percent of the income distribution in each city (for details, see Appendix Tables A5 and A8). This would lessen existing inequities in state and local tax systems, which are by and large regressive.⁵

Local governments have a track record of implementing ambitious policies that support economic well-being. Cities have been early adopters of stronger minimum wage ordinances, paid sick leave programs, guaranteed income pilots, and universal preschool. Local policy efforts also often become models for broader state and federal investments that build on local successes, and local governments that establish Child Tax Credits could continue this tradition.⁶

In this report, we use data from 14 cities to show how local Child Tax Credits could augment federal and state efforts to reduce child poverty and help families with the costs of raising children. Specifically, we provide the size of local child credit needed to cut child poverty by 25 percent and 50 percent when combined with federal and state Child Tax Credits.

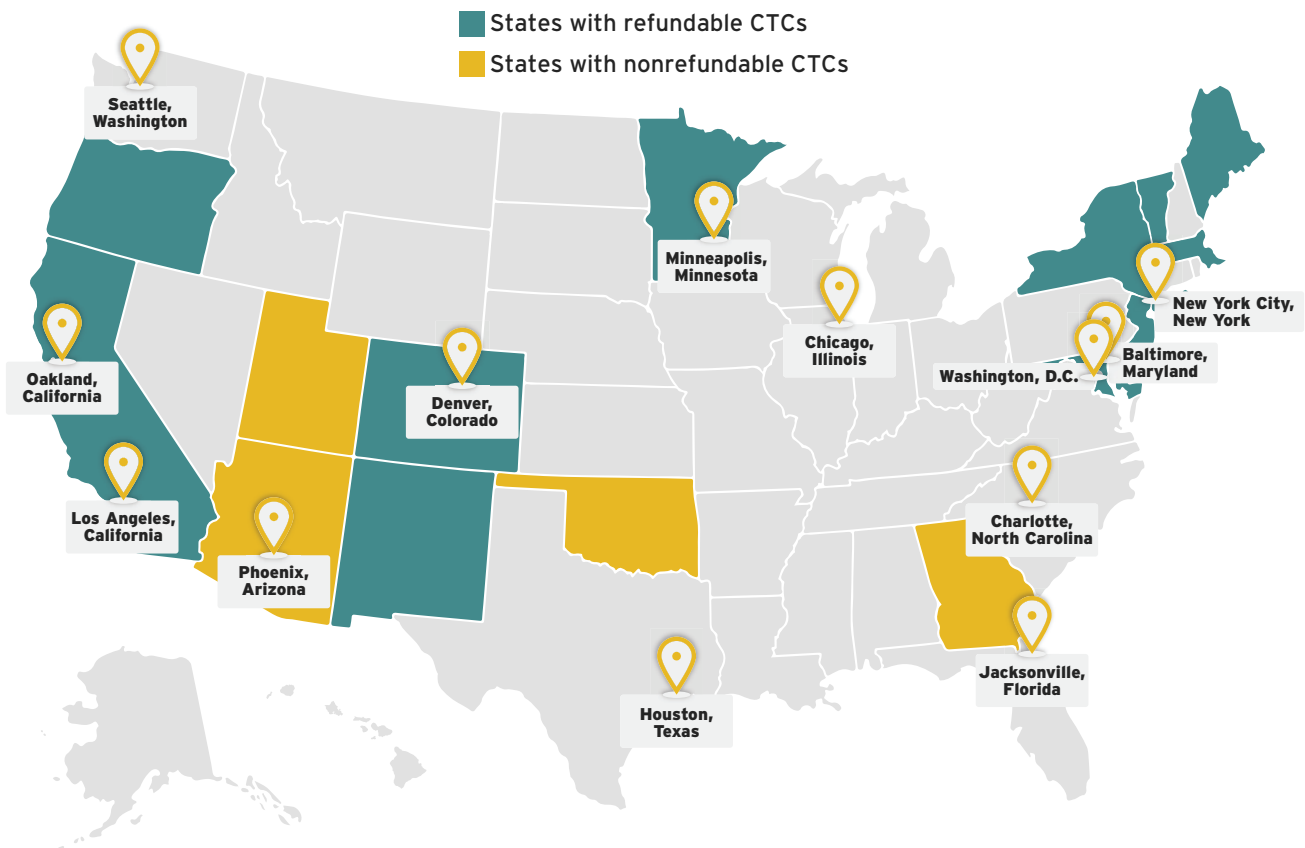
Study Overview

We illustrate the promise of local child tax credits by analyzing their potential effects on child poverty and revenues in 14 select cities.

- 1) Baltimore, Maryland
- 2) Charlotte, North Carolina
- 3) Chicago, Illinois
- 4) Denver, Colorado
- 5) Houston, Texas
- 6) Jacksonville, Florida
- 7) Los Angeles, California
- 8) Minneapolis, Minnesota
- 9) New York, New York
- 10) Oakland, California
- 11) Philadelphia, Pennsylvania
- 12) Phoenix, Arizona
- 13) Seattle, Washington
- 14) Washington, D.C.¹

FIGURE 1

14 Localities Selected for This Study



Note: If a credit is refundable, taxpayers receive a refund for the portion of the credit that exceeds their income tax bill.
*Although Illinois has a credit called the “Illinois Child Tax Credit,” Illinois is not shaded because it is not a stand-alone child tax credit in the traditional tax sense; rather, it is calculated as a percentage of the Illinois Earned Income Tax Credit (EITC) and is only available to those already eligible for the EITC.

We selected cities with the largest populations and then focused on the 14 that also have sufficient data on income and poverty in the U.S. Census Bureau’s American Community Survey (ACS) research files. These files include poverty status measured using the Supplemental Poverty Measure (SPM).⁷ Cities were excluded for insufficient sample size because poverty rates did not benchmark

1. Washington D.C. had previously passed legislation to create a local CTC that would have provided eligible families with a maximum credit of \$420 per dependent child under the age of 6 starting in tax year 2025, but the credit has since been excluded from the 2026 budget.

well against other data sources, or because their political boundaries were difficult to reconcile with Census data.² We also sought geographic diversity across the country.

Any city or locality could design its own child credit, not just those highlighted here. We model what it would take for a local credit to achieve a 25 or 50 percent reduction in child poverty. There are two ways to think about how a city could hit such targets.

- 1** The first involves reducing the child poverty rate after the federal and any state credits achieve whatever poverty reduction that they do. In other words, the baseline poverty rate that we aim to cut in half is the current poverty rate after accounting for federal and state credits. Using this baseline, we find the local credit amount that cuts the poverty rate in half on its own.
- 2** The second involves thinking of a local credit as supplementing the poverty reduction that the federal and any state credits already achieve. In other words, the baseline poverty rate that we aim to cut in half is the poverty rate before any federal or state Child Tax Credits are accounted for. Here, we identify the local credit amount that cuts the child poverty rate by half when combined with existing federal and state credits.

The main results we present here use the latter thought experiment, conceiving of a local credit as a supplement to federal and state policy. In Appendix A we provide results following the first thought experiment listed above, showing the credit values and costs that would achieve child poverty reduction targets from a local credit alone. Costs and credit amounts under the first thought experiment would be substantially higher than those under the second thought experiment because poverty reduction effects in this case are solely attributable to the local credit. Given the interplay between federal, state, and local policies, however, we present costs and credit amounts under the second thought experiment in the main sections of this report.

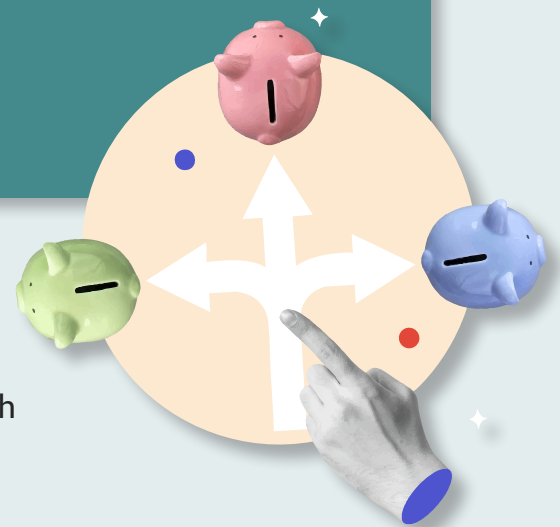
². Cities that either did not benchmark well against other data sources, or posed challenges with regards to geographic boundaries included Atlanta, Detroit, New Orleans, Miami, Pittsburgh, and Nashville.

How Cities Could Administer a Local CTC

Localities with their own or a state-level income tax system already have the infrastructure in place to administer a local Child Tax Credit. These systems allow cities and counties to coordinate with state agencies, streamline delivery, and minimize administrative barriers. New York City, for example, provides a strong model: its Earned Income Credit is integrated into the annual tax filing process, making it accessible for residents who pay city income tax and have claimed the federal and state EITCs. The city also partners with the IRS to identify residents who appear eligible for the credit but have not claimed it, contact these residents, and send them pre-filled amended tax return forms that can be submitted to claim the local, state, and federal EITCs. Where state Child Tax Credits already exist, local governments can similarly partner with state systems to automatically deposit credits.

While not all localities have access to such infrastructure, they can draw lessons from other programs that have successfully delivered direct cash payments. For example, Cambridge, Massachusetts, and Chicago, Illinois, used American Rescue Plan Act (ARPA) funds to launch guaranteed income pilots by partnering with community organizations and public benefit corporations. These efforts show that even without tax-based systems, cities and counties can build effective programs by creating standalone application portals, leveraging IRS data-sharing agreements, and partnering with community-based organizations, third-party administrators, or regional service providers.

Regardless of the credit's delivery mechanism (i.e., through the state's tax infrastructure or other means), outreach is critical to ensuring that all eligible families receive a credit. Many eligible families may not file taxes or may distrust government. Proactive, multilingual, community-based strategies are essential to ensure these families receive the credit.



Policy Design

Local Child Tax Credits, like Child Tax Credits at the state level,⁸ that are most effective at reducing child poverty and inequality are guided by the following principles:

- ✓ **Full Refundability:** Children in families with no or low earnings are eligible for the full credit.
- ✓ **Per-Child Benefits:** The full credit is made available to children regardless of family size or where they come in the birth order.
- ✓ **Indexed to Inflation:** The value of the credit is indexed to inflation so as not to erode the credit over time.
- ✓ **Young Child Bonus:** A larger credit to children under age 6 is provided to target additional resources at a critical period of child development when the costs of raising children are often higher.
- ✓ **Monthly Payments:** The credit is delivered in regular installments, rather than a once-per-year lump sum.
- ✓ **Income Phaseouts:** The same full credit is available to children in low- and middle-income families. Weigh tradeoffs when considering if and when to phase out the credit for higher earning families.
- ✓ **Inclusivity:** Ideally, children are included in credit eligibility regardless of immigration status. However, caution should be used given recent drastic shifts in policy that have fundamentally changed the nature of immigrants' relationship with the tax code and tax filing.⁹

Each design choice has different implications for both costs and anti-poverty potential. Past research has demonstrated that Child Tax Credits that are fully refundable, inclusive of a wide range of recipients, and that provide families with large credit amounts have the highest potential to reduce child poverty.¹⁰ A universal Child Tax Credit would help the most children and be administratively efficient, but of course it would be more costly. If revenues don't allow for that broad of a credit, lawmakers can raise more revenue or target the credit more carefully.

In the context of these competing budgetary priorities, lawmakers can consider a number of options to reduce costs while still making a dent in poverty. For example, localities can adjust the income level at which the credit begins to phase out. Setting a lower income threshold would leave out middle- or higher-income families, but would allow lawmakers to target resources towards families with the lowest incomes. Local credits can also be limited to children under 6 given the importance of early childhood development and the higher costs of raising younger children (e.g., child care).¹¹ And, of course, localities can begin with smaller credits. Future expansions can follow naturally from these design choices, as lawmakers can increase the size of the credits, or raise phaseout thresholds or the age of eligibility to expand access.

Given these tensions between cost and efficacy, we present results under two different design scenarios:

- **More universal approach:** The credit begins to phase out when incomes rise above \$110,000 for joint filers and \$75,000 for heads of household at a rate of 5 percent per dollar of income above these thresholds.³
- **More targeted approach:** The credit phases out at a relatively low level of income and at a higher rate – specifically, one that mirrors the structure of the federal EITC for families with three or more dependents. Under this structure, the credit would begin to phase out at a rate of 21.06 percent at the point where families with three or more dependents are no longer eligible for the federal EITC (\$61,555 for heads of household and \$68,675 for joint filers in tax year 2025). This results in a more targeted credit that would still provide a full local Child Tax Credit to children in the lowest-income households.

Under both credit designs, we also provide a 20 percent bonus in the credit amount for children under the age of 6. In this report, we provide estimates of the local Child Tax Credit values necessary for achieving 25 percent and 50 percent reductions in local child poverty under both design options.

Overview of Federal Child Tax Credits

Since its establishment in 1997, the federal Child Tax Credit has played an increasingly important role in reducing child poverty and helping families with the costs of raising children.¹² Several recent changes to the federal Child Tax Credit have highlighted important design features and their role in either

³ These thresholds mirror the original federal Child Tax Credit income phase-out from 1997. This threshold remained in place until the temporary increase under the Tax Cuts and Jobs Act of 2017 (TCJA) that expanded eligibility for the full credit to families with up to \$400,000 in income, which was since made permanent.

increasing or reducing its antipoverty potential. Before the 2017 tax law was enacted, the maximum credit was \$1,000. The refundable portion, which is the part that benefits working low-income people who pay federal payroll taxes but do not earn enough to owe federal income tax, was restricted to a percentage of earnings above a set threshold. This generally meant that low-wage workers with children, the people who needed it the most, usually could not receive the full credit.

The 2017 tax law increased the maximum credit from \$1,000 to \$2,000. This made it much more effective at boosting income for the families who were eligible for the full credit. However, many children in the most financially vulnerable families were excluded from the full credit. Policymakers capped the refundable part of the credit below the full \$2,000 that other families could get and retained an earnings requirement, limiting the credit for those who needed it most. As a result of these two limits, one-third of children were ineligible for the full credit when the law was passed because their family's income was too low.¹³ The 2017 law also barred children without Social Security numbers from receiving the credit.

The temporary expansion to the federal Child Tax Credit under the 2021 American Rescue Plan Act (ARPA) boosted credit amounts substantially and made the full credit available to families with the lowest incomes. This played a significant role in the child poverty rate falling to a record low of 5.2 percent in 2021.^{14,15}

With the expiration of the expanded Child Tax Credit in 2022, the federal credit reverted to its current structure based on parameters set in the 2017 tax law. Recent research has found that one in four children under the age of 17 were ineligible for the full credit in 2023 because their family income was too low.¹⁶

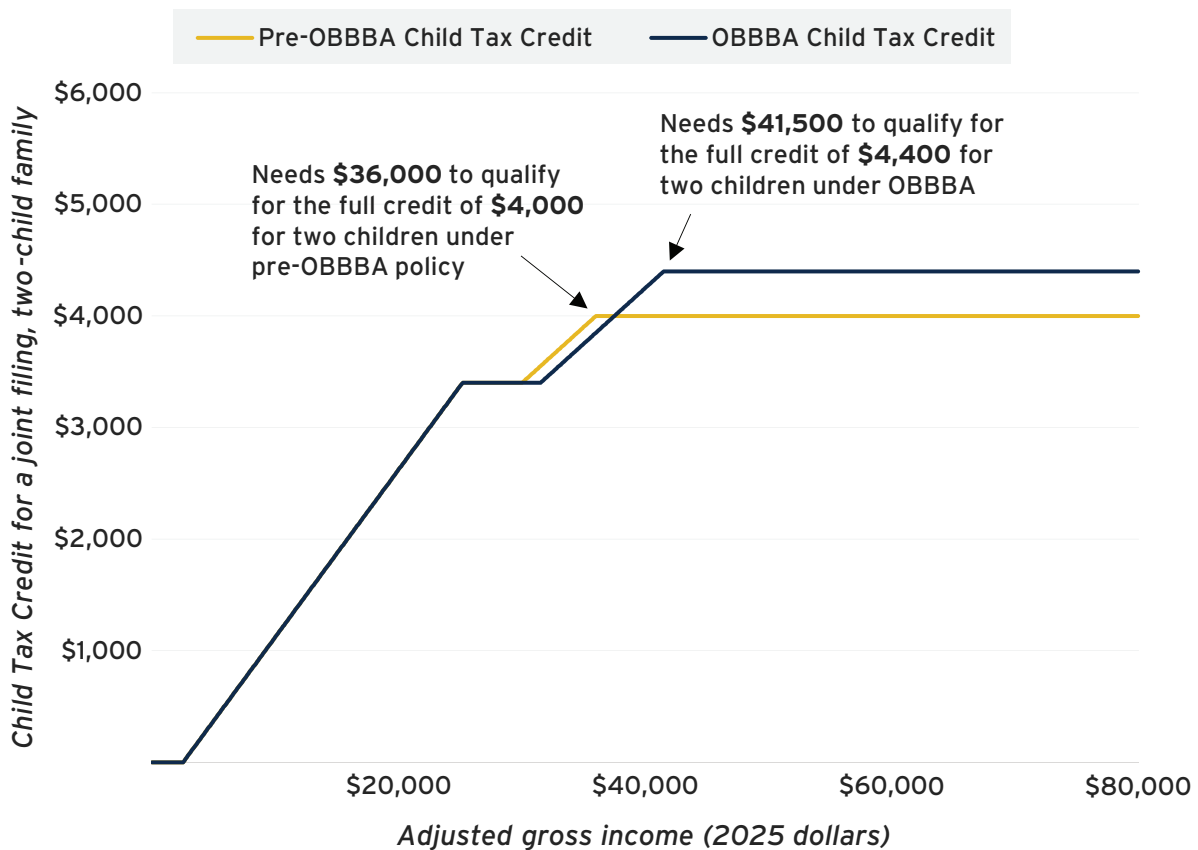
With the 2017 tax law set to expire at the end of 2025, a flurry of proposals that would modify the federal Child Tax Credit were put forth in the months leading up to the passage of the tax and spending bill – also known as OBBBA¹⁷ – that was signed into law on July 4. OBBBA increases the maximum credit amount from \$2,000 to \$2,200, but keeps the refundable portion of the credit capped (at \$1,700 in 2025), though both maximum credit values are permanently indexed to inflation. OBBBA also makes permanent the credit's earnings requirement. As a result, the one in four children previously ineligible for the full credit because their family income was not high enough to qualify fully – totaling 17 million children nationally – see no gain in their Child Tax Credit under the new law. Further, 2 million children in moderate-income families only partially benefit from the credit increase because their family income is too low to qualify for the full

benefit.¹⁸ In addition, OBBBA makes permanent the ban on children receiving the credit if they do not have a Social Security number and expands that restriction by requiring children to have at least one parent or guardian with a Social Security number as well.¹⁹

These changes to the federal Child Tax Credit will take effect immediately, meaning these rules will govern families' credits when filing their 2025 federal income taxes in the spring of 2026 (based on their 2025 income). In Figure 1, we show the Child Tax Credit that a married, joint-filing family with two children will qualify for in 2025 based on the new law versus previous law.

FIGURE 2

Child Tax Credit Structure for a Married, Joint-Filing Family With Two Children in 2025: OBBBA Vs. Pre-OBBBA Policy



Note: In this example, Adjusted Gross Income (AGI) and earned income are equivalent. The income needed to gain access to the full Child Tax Credit may be different for families who have, for example, both ordinary income and capital income. Tax liabilities used to determine the value of a families' Child Tax Credit calculated according to 2025 tax parameters. Results also reflect the \$1,500 increase in the standard deduction for joint filers and \$1,125 increase for head of household filers included in OBBBA for 2025. Some families may receive a smaller Child Tax Credit under OBBBA compared to pre-OBBBA policy because of the change to the standard deduction.

Source: Institute on Taxation and Economic Policy, Columbia Center on Poverty and Social Policy, 2025

Under OBBBA, this new Child Tax Credit structure will be implemented at the same time that cuts to other programs including SNAP and Medicaid take effect. For many families, these cuts will undermine and vastly exceed any gains from the modest Child Tax Credit expansion described above.²⁰ Because the federal credit will retain the same earnings requirements and refundability structure, the families with the lowest incomes will continue to be ineligible for the full credit under the new law. Overall, more than one in four children will be ineligible for the full credit because their family income is not high enough for them to qualify fully.²¹

Overview of State Child Tax Credits

States are increasingly investing in Child Tax Credits. The goals of state credits vary, but they generally build on the federal credit and can augment the federal credit's antipoverty potential while also redressing regressivity in state and local tax codes. Momentum around these credits has grown steadily since ARPA temporarily expanded the federal Child Tax Credit in 2021.²² In just the past five years, many states have created or expanded their own credits. In 2020, only six states had CTCs and most were small and nonrefundable.²³ In 2025, 14 states have CTCs, with many credits exceeding \$1,000 per qualifying child, and Georgia is set to enact one next year.²⁴ Not all 15 state CTCs are the same, and some are far more generous and wide-reaching than others. Four states – Georgia, Utah, Arizona, and Idaho – have enacted nonrefundable credits that do not reach the lowest-income families, while some states have fully refundable credits of \$1,000 or more per child.²⁵

Results

Our main results show what size a local Child Tax Credit would need to be to reduce child poverty by 25 percent and 50 percent when we consider the potential credit as a supplement to existing federal and state policies. For example, if the federal Child Tax Credit and a state's credit reduce child poverty by 20 percent, we ask what size a local credit would need to be to increase that poverty reduction from 20 to 25 or 50 percent. The baseline poverty rates against which we measure poverty reduction are therefore the poverty rates in each locality before accounting for the effect of any Child Tax Credit policy (federal and state) on the poverty rate. We begin by discussing baseline poverty rates in the cities we are studying, the effects of federal and state Child Tax Credits on child poverty in these cities, and the target rates corresponding to a 25 percent and 50 percent reduction in child poverty for each city. We then present the size of local Child Tax Credits needed to reach this target.²⁶

Figure 3 presents, for each city in our study:²⁷

- (1) the baseline child poverty rate *before* accounting for the effects of federal and state Child Tax Credit policies (gray bar)
- (2) the child poverty rate *after accounting* for federal and state Child Tax Credits (blue bar), which also represents the actual poverty rate for each city in our data
- (3) the target child poverty rate (green bar) that corresponds with a 25 percent reduction relative to the child poverty rate *before* accounting for federal and state Child Tax Credits (as shown in the gray bar)
- (4) the target child poverty rate (yellow bar) that corresponds with a 50 percent reduction relative to the child poverty rate *before* accounting for federal and state Child Tax Credits.

Note that Figure 3 also identifies those cities where there is no state Child Tax Credit. In these cities, children are eligible only for the federal credit, and the blue bar in each panel shows the relative impact of this policy alone. Poverty rates in Figure 3 are measured using the Supplemental Poverty Measure in the American Community Survey, as described in Appendix B.

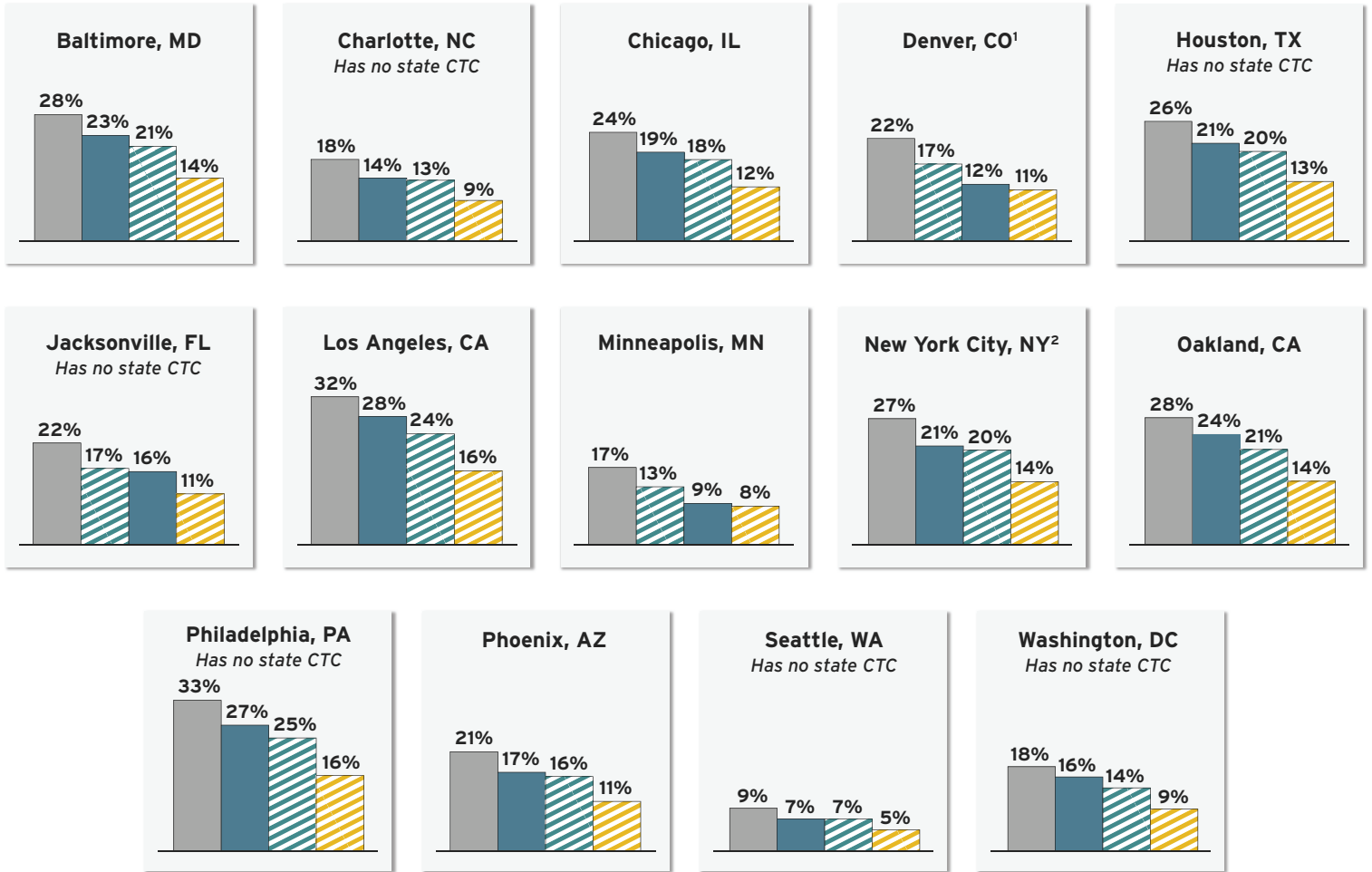
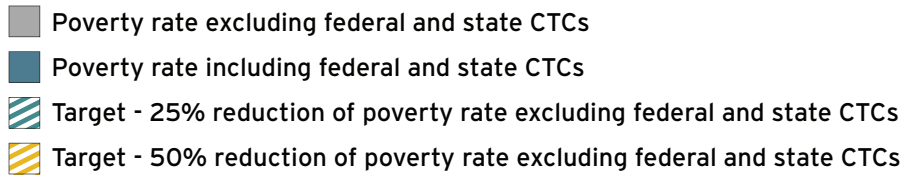
Figure 3 underscores the important role federal⁴ and state Child Tax Credits play in reducing child poverty, while also showing that poverty remains widespread despite these policies. In 10 of the 14 cities examined, more than 20 percent (or 1 in 5) children are living in poverty before counting federal and state credits. After factoring in federal and state credits, six of these 14 cities still have child poverty rates of 20 percent or higher, and 12 have child poverty rates above 10 percent.

Figure 3 also shows that the effects of federal and state credits on poverty are not uniform across cities. These policies, for example, reduce the poverty rate by 4 percentage points in Phoenix (from 21 percent to 17 percent) but by 10 percentage points in Denver (from 22 percent to 12 percent). This variation stems not only from differences in state policies, but also from cross-city differences in cost of living, average incomes, and local demographics such as the average family size. Additionally, in three of the 14 cities (Denver, Jacksonville, and Minneapolis), the combination of federal and state credits (where available) already achieves the 25 percent poverty reduction target.

⁴. Note that the federal Child Tax Credit was recently changed under OBBBA, which was passed in July 2025. The federal credit examined here reflects the changes instituted under this new law. This version of the federal Child Tax Credit requires dependent children and at least one parent to have a Social Security Number in order to claim the credit. Our model does not account for immigration status, which may result in overestimates of the federal credit's poverty reduction effects.

FIGURE 3

Child Poverty Rates And Target Poverty Reduction By Locality



¹The Denver, Colorado figures include the Family Affordability Tax Credit (FATC), which is only available when certain revenue conditions are met each year. Prior to tax year 2024, the Colorado state CTC existed as a percent match of the federal CTC.

²The New York City credit is modeled in its expanded form for tax year 2026.

Source: Authors' analysis of reweighted 2018, 2019, and 2022 American Community Survey data, including variables related to the Supplemental Poverty Measure developed by Fox, Pacas, and Glassman (2020) and retrieved via IPUMS (Ruggles et al. 2025). Data from the peak years of the COVID-19 pandemic were excluded because they are less reflective of experiences today, and many of the policy expansions from those years are no longer in effect. Poverty measured using the Supplemental Poverty Measure. Children are defined as persons under the age of 18.

Why are the antipoverty effects of state Child Tax Credits so different?

A number of state CTC design choices have a direct bearing on the extent to which credits reduce child poverty.²⁸ In particular, the policies that have the most potential to lift children out of poverty tend to be those that:

- Provide substantial credit amounts to eligible families
- Are available to both younger and older children
- Ensure that families with the lowest incomes received the full credit (i.e., are fully refundable)
- Do not phase out completely until higher in the income distribution (i.e., families with incomes below \$50,000 – or roughly 60 percent of median income – are eligible for at least a partial credit)

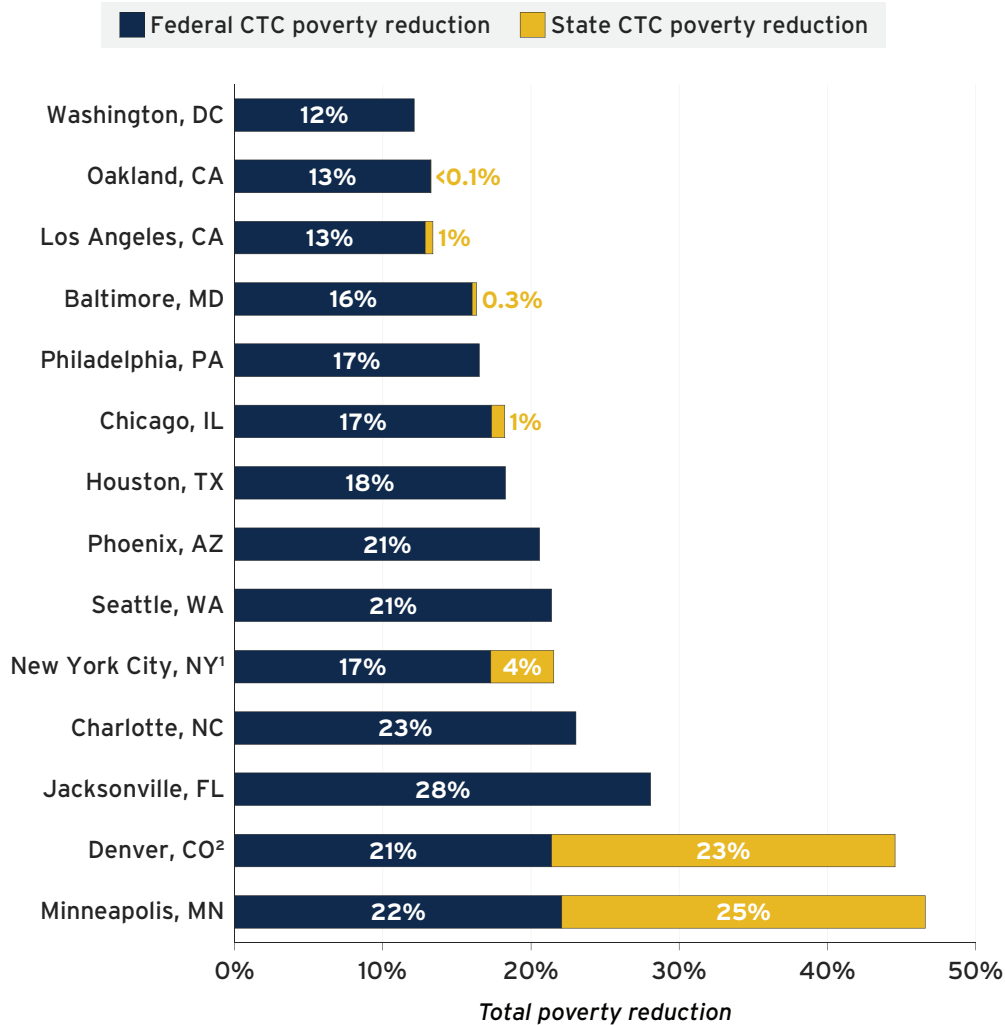
The policies in both Minnesota and Colorado reflect these design choices. Minnesota's Child Tax Credit provides \$1,750 per dependent child under the age of 18 and is combined with a Working Family Tax Credit that provides an additional bonus for older children. Similarly, Colorado's Child Tax Credit provides \$1,200 per dependent child under the age of 6 and, when available, the Family Affordability Tax credit provides an additional \$3,730 per child under age 6 and \$2,454 per child ages 6-17.²⁹ The policies in both Minnesota and Colorado are also fully refundable and phase out higher in the income distribution, meaning that nearly all children in poverty are able to benefit from these policies in their respective states.

As a result, these stand out among state Child Tax Credits in their ability to reduce poverty as they provide substantial credit amounts to the majority of children in poverty, regardless of age. Other states, in comparison, provide smaller credit amounts, may only be available to younger children, may not be fully refundable, or may not reach the majority of children in poverty, culminating in smaller antipoverty effects.

Figure 4 presents the relative poverty reduction resulting from both the federal and state Child Tax Credits by locality, further highlighting the federal credit's varying impacts and the substantial differences driven by the presence and size of additional state credits. State credits are projected to reduce child poverty by nearly 25 percent in Denver and Minneapolis, but by less than 5 percent in New York City, and less than 1 percent in Chicago, Baltimore, and Los Angeles.³⁰ The larger relative effect of the Colorado and Minnesota credits compared to those in other states reflects the fact that these credits are both larger and available to a wider range of children.³¹ Of course, state credits have no effect in localities where there is no state credit.

FIGURE 4

How Much Do Federal and State Child Tax Credits Reduce Child Poverty in Each Locality?



¹The New York City credit is modeled in its expanded form for tax year 2026.

²The Colorado state credit considers the state's Child Tax Credit and Family Affordability Tax Credit (FATC). The FATC is only available in years when certain revenue conditions are met.

Source: Authors' analysis of reweighted 2018, 2019, and 2022 American Community Survey data, including variables related to the Supplemental Poverty Measure developed by Fox, Pacas, and Glassman (2020) and retrieved via IPUMS (Ruggles et al. 2025). Data from the peak years of the COVID-19 pandemic were excluded because they are less reflective of experiences today, and many of the policy expansions from those years are no longer in effect. See Appendix B for details on individual state-level Child Tax Credit policies. Children are defined as persons under the age of 18.

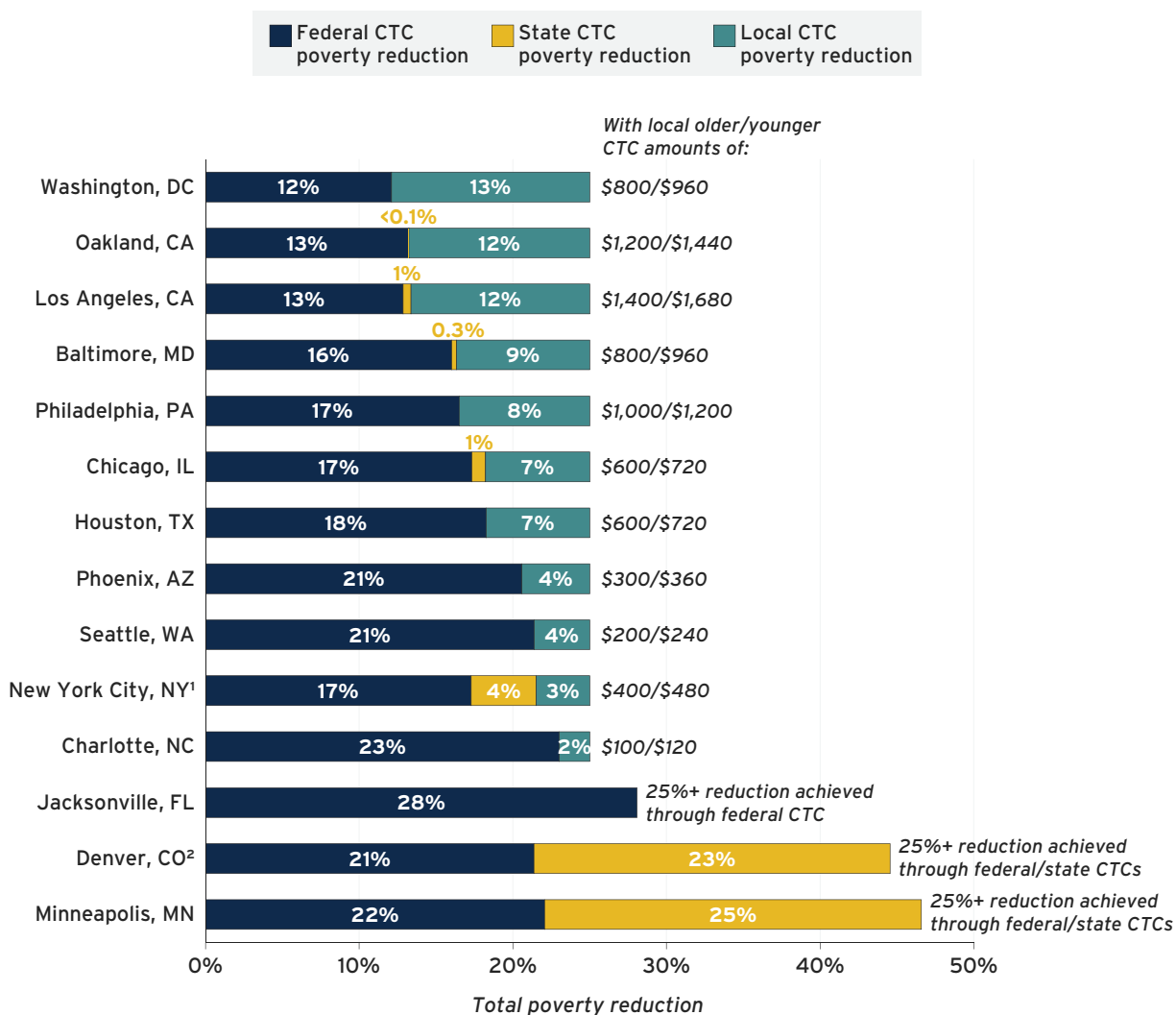
What is needed from local Child Tax Credits to meaningfully reduce child poverty beyond what is accomplished by federal and state policies? Figure 5 presents (1) the local credit amounts needed to cut child poverty in each locality by 25 percent – to the first target rates in Figure 3 – when combined with the federal and state credits, and (2) the additional reduction in poverty that would be associated with the local credit. Note that, following the principles outlined earlier, we assume that young children would receive a larger credit than older children (with the credit for younger children amounting to 1.2x the older child

credit). A base credit of \$1,500 or less would be enough to cut child poverty by 25 percent across all localities in combination with state and federal credits. In fact, with the exception of Los Angeles and Oakland, a base credit of \$1,000 or less would be sufficient for a 25 percent reduction across the remaining localities in this study. Notably, when combined, state and federal credits reduce child poverty by close to or even more than 25 percent in a number of localities (Jacksonville, Denver, and Minneapolis).

FIGURE 5

Local Credit Amounts Needed to Cut Child Poverty By 25 Percent in Each Locality Under a More Universal Design

Combined effect of federal, state, and local Child Tax Credits



¹The New York City credit is modeled in its expanded form for tax year 2026.

²The Colorado state credit includes the state's Child Tax Credit and Family Affordability Tax Credit (FATC). The FATC is only available when certain revenue conditions are met each year.

Note: Local Child Tax Credit amounts presented in this figure are based on the more universal credit structure design, although credit amounts under the targeted structure only vary slightly for a few localities. See Appendix A for credit amounts needed under the more targeted structure, and Appendix B for details on individual state-level Child Tax Credit policies.

Source: Authors' analysis of reweighted 2018, 2019, and 2022 American Community Survey data, including variables related to the Supplemental Poverty Measure developed by Fox, Pacas, and Glassman (2020) and retrieved via IPUMS (Ruggles et al. 2025). Data from the peak years of the COVID-19 pandemic were excluded because they are less reflective of experiences today, and many of the policy expansions from those years are no longer in effect. Children are defined as persons under the age of 18.

Figure 6 provides the credits needed to achieve the 50 percent reduction in child poverty. We find that, with the exception of Oakland and Los Angeles, a base credit of \$4,000 per child or less would enable all localities to achieve the target 50 percent reduction in child poverty. In seven of the cities, such a reduction could be achieved with a base per child credit of \$3,000 or less.

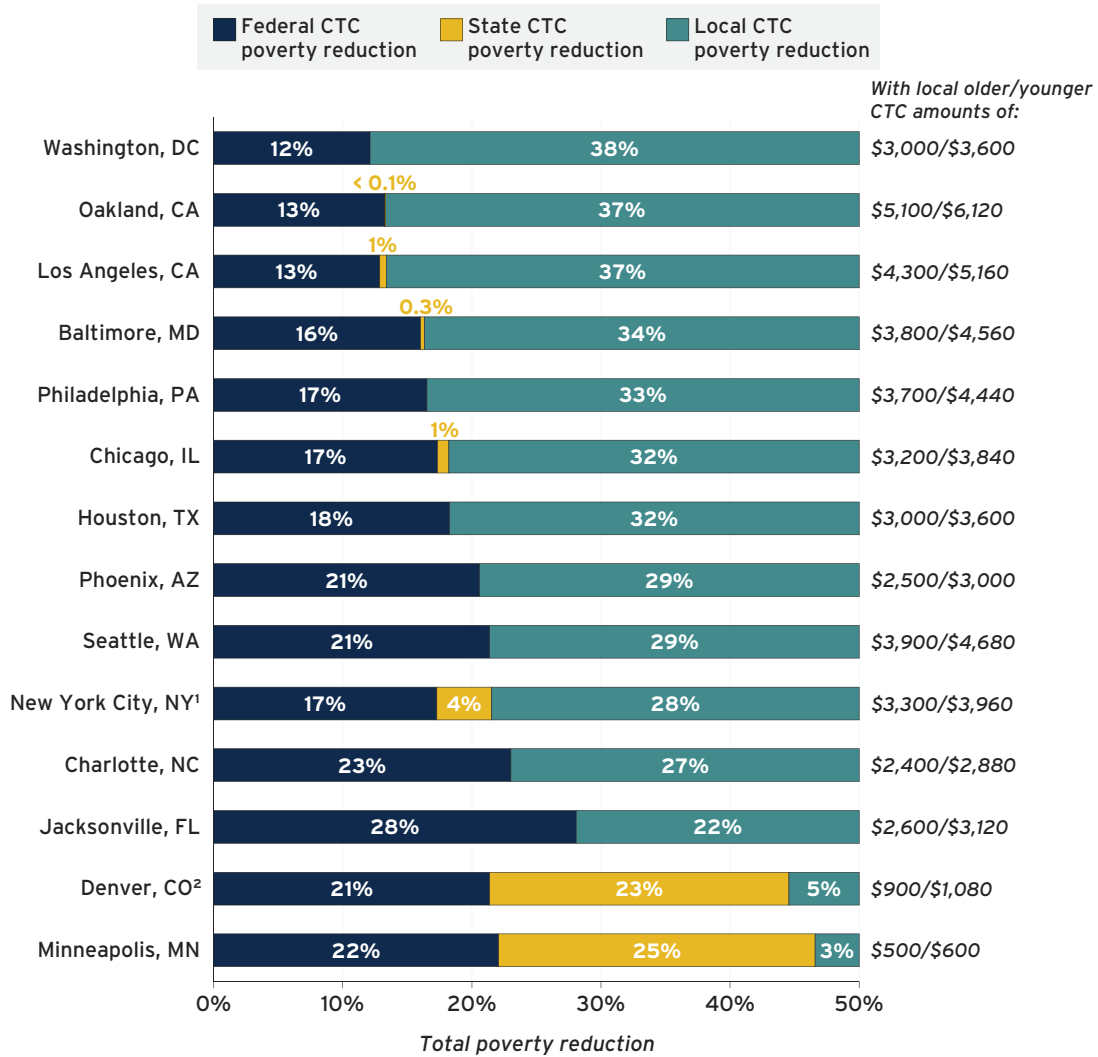
The results in Figure 6 also show how the combined effects of federal and state Child Tax Credits have a direct bearing on how much localities would need to supplement them to achieve a 50 percent reduction in poverty. For example, because federal and state credits have relatively small effects in Oakland, a local credit in this locality would need to be more than \$5,000 to cut poverty by an additional 37 percent and achieve a 50 percent reduction in child poverty. In contrast, in localities like Minneapolis that benefit from both the federal policy and an expansive state policy, a local credit would only need to be around \$500 to cut poverty by an additional 3 percent to reach the 50 percent target. This highlights the importance of robust state child credits for helping local governments meaningfully reduce their city's often high child poverty rates. Expansions to the federal Child Tax Credit akin to those in place in 2021 would also significantly reduce poverty in cities across the country. With such an expansion, the local credits needed to achieve these poverty reduction targets would be markedly lower.



FIGURE 6

Local Credit Amounts Needed to Cut Child Poverty By 50 Percent in Each Locality Under a More Universal Design

Combined effect of federal, state, and local Child Tax Credits



¹The New York City credit is modeled in its expanded form for tax year 2026.

²The Colorado state credit includes the state's Child Tax Credit and Family Affordability Tax Credit (FATC). The FATC is only available when certain revenue conditions are met each year.

Note: Local Child Tax Credit amounts presented in this figure are based on the more universal credit structure design, although credit amounts under the targeted structure only vary slightly for a few localities. See Appendix A for credit amounts needed under the more targeted structure, and Appendix B for details on individual state-level Child Tax Credit policies.

Source: Authors' analysis of reweighted 2018, 2019, and 2022 American Community Survey data, including variables related to the Supplemental Poverty Measure developed by Fox, Pacas, and Glassman (2020) and retrieved via IPUMS (Ruggles et al. 2025). Data from the peak years of the COVID-19 pandemic were excluded because they are less reflective of experiences today, and many of the policy expansions from those years are no longer in effect. Children are defined as persons under the age of 18.

Denver, Colorado Highlight: The Role of the Family Affordability Tax Credit

In 2024, Colorado established two new tax credits for children: the Colorado Child Tax Credit and the Colorado Family Affordability Tax Credit (FATC). The Colorado Child Tax Credit provides families with up to \$1,200 per child for their young children (under age 6), while the FATC is available to children of all ages and is higher in value (\$3,730 per child under age 6 and \$2,454 per child ages 6-17). However, the FATC is only distributed when state surplus revenue exceeds predetermined targets.³² Results in the main body of this report (Figures 3 - 5) assume that Colorado is meeting its revenue targets and that families are eligible for both the states' Child Tax Credit and FATC. If, however, the state does not meet these revenue targets, the cumulative effect of federal and state Child Tax Credits would be smaller in Colorado, and Denver would need to provide a larger local credit to achieve a 50 percent reduction in child poverty.

Figure A shows that in this alternative scenario, the poverty rate after including the federal and Colorado Child Tax Credit, but without that FATC, would be 17 percent – about 5 percentage points higher than the poverty rate with the FATC. **Figure B** shows that Denver would need a \$2,900 per child credit to reach the target 50 percent reduction when FATC is not fully funded versus a \$900 per child credit when it is.

FIGURE A

Poverty Rates and Target Poverty Reduction in Denver With and Without the Family Affordability Tax Credit

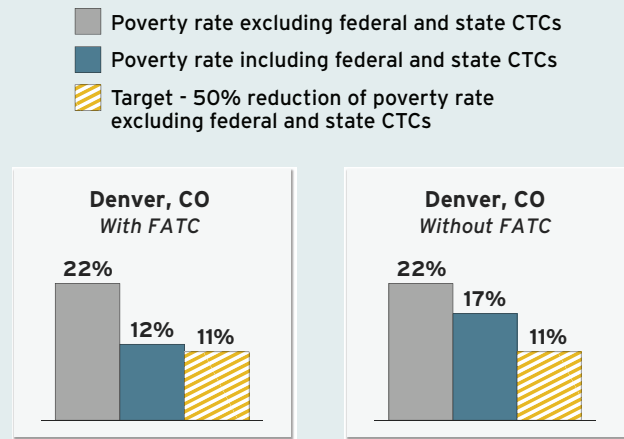
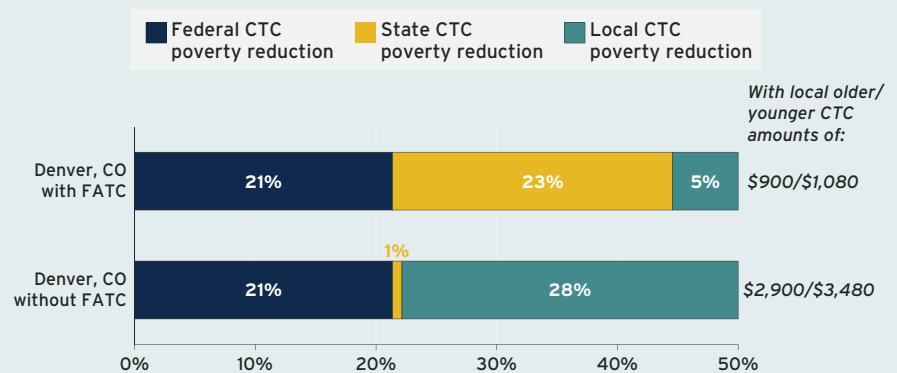


FIGURE B

Local Credit Amounts to Cut Child Poverty By 50 Percent in Denver, Colorado

Combined effect of federal, state, and local Child Tax Credits



Source: Authors' analysis of reweighted 2018, 2019, and 2022 American Community Survey data, including variables related to the Supplemental Poverty Measure developed by Fox, Pacas, and Glassman (2020) and retrieved via IPUMS (Ruggles et al. 2025). Data from the peak years of the COVID-19 pandemic were excluded because they are less reflective of experiences today, and many of the policy expansions from those years are no longer in effect. Children are defined as persons under the age of 18.

In eight of the 14 cities examined, the cost for achieving a 50 percent poverty reduction is less than 15 percent of city revenues, and in three of those cities, the total cost is 5 percent or less. When pursuing a 25 percent poverty reduction, the costs are far less; costs are less than 3 percent of the city revenues in ten out of 14 cities and less than 1 percent in a handful of cities. In cities with smaller operating budgets and/or higher child poverty rates, Child Tax Credits can be designed to better meet budget windows. However, smaller credits will result in lower child poverty reduction.³³

Table 1 presents the cost estimates for the local Child Tax Credits that would achieve the child poverty reductions presented in Figure 3, assuming that the local credit would be more widely available to children in the cities examined.³⁴ Variation in costs across cities is attributable to differences in population size and composition as well as income distribution, among other factors. Table 3 in Appendix A presents the cost estimates for both baseline poverty rates for each city (i.e., the first and second thought experiments discussed previously). Table 4 in Appendix A presents corresponding cost estimates for credits that have the same maximum values, but are more targeted to children in lower- and moderate-income families.

TABLE 1

Cost Estimates for Local Child Tax Credits Assuming Wide Availability

City	Cost to reduce poverty before accounting for state and federal CTCs	
	25% reduction	50% reduction
Baltimore, MD	\$83.6M	\$425.2M
Charlotte, NC	\$15.1M	\$407.1M
Chicago, IL	\$248.6M	\$1.5B
Denver, CO	-	\$83.6M
Denver, CO (<i>Without FATC</i>)*	\$26.8M	\$294.1M
Houston, TX	\$285.0M	\$1.5B
Jacksonville, FL	-	\$531.9M
Los Angeles, CA	\$857.7M	\$2.9B
Minneapolis, MN	-	\$28.7M
New York City, NY (<i>state CTC as % match of federal credit</i>)	\$946.5M	\$5.6B
New York City, NY (<i>expanded state CTC in TY 2026</i>)**	\$522.1M	\$5.1B
Oakland, CA	\$74.1M	\$354.5M
Philadelphia, PA	\$287.8M	\$1.2B
Phoenix, AZ	\$103.4M	\$931.3M
Seattle, WA	\$8.1M	\$237.4M
Washington, D.C.	\$74.5M	\$300.3M

*Denver (No FATC): The Family Affordability Tax Credit is a refundable credit for Colorado residents with children under 17, with income limits. Due to a projected decrease in state revenue, stemming in part from federal policy changes, the FATC may be eliminated for the 2026 and 2027 tax years. This row demonstrates the costs needed assuming the FATC is not funded.

**New York City (Expanded CTC): New York has expanded its state child tax credit for Tax Year 2026. The expanded credit is set to sunset after Tax Year 2028.

Source: Institute on Taxation and Economic Policy, Columbia Center on Poverty and Social Policy, 2025

Conclusion

This report assesses how local Child Tax Credits could supplement federal and state credits to reduce child poverty. We examined how large a local credit would need to be to reach specified poverty-reduction targets and the costs of such credits.

While federal and state Child Tax Credits play an important role in reducing child poverty, much can still be done to reduce child poverty in cities across the country. This is especially true given the inequities resulting from the design of the federal credit. Many children across demographic groups are helped by the child tax credit but others are left behind because of design flaws that could easily be corrected. Black and Hispanic children are disproportionately ineligible for the full federal credit, as are younger children, children with single parents, children in poorer families, and children in larger families.³⁵ Local governments have a critical role to play in reducing child poverty and filling the gaps left by existing state and federal policies with local credits. Local Child Tax Credits could provide large tax cuts (as a percentage of income) to families at the bottom of the income scale, lessening the overall regressivity of state and local tax systems.



The size and cost of credits needed to cut child poverty by half vary by city but are substantially lower when a city is located in a state with a robust Child Tax Credit, such as Minnesota and Colorado. Even where state policies fall short, local governments can still act on their own to create local credits and meaningfully reduce poverty. Cities have long been early adopters of policies that advance equity and broad-based economic security, including stronger minimum wage ordinances, paid sick leave programs, guaranteed income pilots, and universal preschool. Cities should also consider local Child Tax Credits as a powerful policy tool that not only benefits individual households and local economies, but can also inspire broader state and federal action.

Appendix A. Supplementary Results

Appendix Table A1

Local Child Tax Credit amounts needed for reducing child poverty by 25 percent and 50 percent in combination with state and federal Child Tax Credits in each locality under a more universal design

City	25% child poverty reduction		50% child poverty reduction	
	Credit for kids aged 6-17	Credit for kids under 6	Credit for kids aged 6-17	Credit for kids under 6
Baltimore, MD	\$800	\$960	\$3,800	\$4,560
Charlotte, NC	\$100	\$120	\$2,400	\$2,880
Chicago, IL	\$600	\$720	\$3,200	\$3,840
Denver, CO	\$0	\$0	\$900	\$1,080
Denver, CO (Without FATC)	\$300	\$360	\$2,900	\$3,480
Houston, TX	\$600	\$720	\$3,000	\$3,600
Jacksonville, FL	\$0	\$0	\$2,600	\$3,120
Los Angeles, CA	\$1,400	\$1,680	\$4,300	\$5,160
Minneapolis, MN	\$0	\$0	\$500	\$600
New York City, NY (state CTC as % match of federal credit)	\$700	\$840	\$3,600	\$4,320
New York City, NY (expanded state CTC in TY 2026)	\$400	\$480	\$3,300	\$3,960
Oakland, CA	\$1,200	\$1,440	\$5,100	\$6,120
Philadelphia, PA	\$1,000	\$1,200	\$3,700	\$4,440
Phoenix, AZ	\$300	\$360	\$2,500	\$3,000
Seattle, WA	\$200	\$240	\$3,900	\$4,680
Washington, D.C.	\$800	\$960	\$3,000	\$3,600

Source: Institute on Taxation and Economic Policy, Columbia Center on Poverty and Social Policy, 2025

Local Child Tax Credit amounts needed for reducing child poverty by 25 percent and 50 percent when poverty reduction is exclusively driven by local Child Tax Credits after federal and state Child Tax Credits have already been accounted for in baseline poverty rates

City	25% child poverty reduction		50% child poverty reduction	
	Credit for kids aged 6-17	Credit for kids under 6	Credit for kids aged 6-17	Credit for kids under 6
Baltimore, MD	\$2,200	\$2,640	\$5,100	\$6,120
Charlotte, NC	\$1,700	\$2,040	\$3,800	\$4,560
Chicago, IL	\$1,900	\$2,280	\$4,700	\$5,640
Denver, CO	\$2,000	\$2,400	\$5,000	\$6,000
Denver, CO (Without FATC)	\$2,100	\$2,520	\$4,600	\$5,520
Houston, TX	\$2,000	\$2,400	\$4,400	\$5,280
Jacksonville, FL	\$2,100	\$2,520	\$4,700	\$5,640
Los Angeles, CA	\$2,400	\$2,880	\$5,300	\$6,360
Minneapolis, MN	\$2,500	\$3,000	\$4,700	\$5,640
New York City, NY (state CTC as % match of federal credit)	\$2,300	\$2,760	\$5,300	\$6,360
New York City, NY (expanded state CTC in TY 2026)	\$2,100	\$2,520	\$5,100	\$6,120
Oakland, CA	\$2,500	\$3,000	\$6,700	\$8,040
Philadelphia, PA	\$2,200	\$2,640	\$4,400	\$5,280
Phoenix, AZ	\$1,600	\$1,920	\$4,000	\$4,800
Seattle, WA	\$1,900	\$2,280	\$5,000	\$6,000
Washington, D.C.	\$1,700	\$2,040	\$3,600	\$4,320

Note: Local Child Tax Credit amounts are the same under both the more universal and targeted credit structures when the baseline poverty rates already include the effects of state and federal Child Tax Credits.

Source: Authors' analysis of reweighted 2018, 2019, and 2022 American Community Survey data, including variables related to the Supplemental Poverty Measure developed by Fox, Pacas, and Glassman (2020) and retrieved via IPUMS (Ruggles et al. 2025). Data from the peak years of the COVID-19 pandemic were excluded because they are less reflective of experiences today, and many of the policy expansions from those years are no longer in effect. Children are defined as persons under the age of 18.

Cost Estimates for Local Child Tax Credits Assuming Wide Availability

This table presents the cost estimates under both structures when the baseline poverty rate for each city includes the value of state and federal Child Tax Credits, with poverty reduction being measured from this lower baseline rate, and when the baseline poverty rate for each city does not include the value of state and federal Child Tax Credits.

City	Cost to reduce poverty after accounting for state and federal CTCs		Cost to reduce poverty before accounting for state and federal CTCs	
	25% reduction	50% reduction	25% reduction	50% reduction
Baltimore, MD	\$239.3M	\$580.5M	\$83.6M	\$425.2M
Charlotte, NC	\$281.6M	\$670.7M	\$15.1M	\$407.1M
Chicago, IL	\$846.6M	\$2.27B	\$248.6M	\$1.5B
Denver, CO	\$195.1M	\$547.2M	-	\$83.6M
Denver, CO (Without FATC)*	\$205.7M	\$497.4M	\$26.8M	\$294.1M
Houston, TX	\$1.0B	\$2.3B	\$285.0M	\$1.5B
Jacksonville, FL	\$424.1M	\$1.0B	-	\$531.9M
Los Angeles, CA	\$1.5B	\$3.6B	\$857.7M	\$2.9B
Minneapolis, MN	\$157.8M	\$321.4M	-	\$28.7M
New York City, NY (state CTC as % match of federal credit)	\$3.4B	\$8.5B	\$946.5M	\$5.6B
New York City, NY (expanded state CTC in TY 2026)**	\$3.1B	\$8.2B	\$522.1M	\$5.1B
Oakland, CA	\$162.5M	\$479.2M	\$74.1M	\$354.5M
Philadelphia, PA	\$666.8M	\$1.4B	\$287.8M	\$1.2B
Phoenix, AZ	\$582.3M	\$1.5B	\$103.4M	\$931.3M
Seattle, WA	\$97.2M	\$328.2M	\$8.1M	\$237.4M
Washington, D.C.	\$164.2M	\$365.9M	\$74.5M	\$300.3M

*Denver (No FATC): The Family Affordability Tax Credit is a refundable credit for Colorado residents with children under 17, with income limits. Due to a projected decrease in state revenue, stemming in part from federal policy changes, the FATC may be eliminated for the 2026 and 2027 tax years. This row demonstrates the costs needed assuming the FATC is not funded.

**New York City (Expanded CTC): New York has expanded its state child tax credit for Tax Year 2026. The expanded credit is set to sunset after Tax Year 2028.

Source: Institute on Taxation and Economic Policy, Columbia Center on Poverty and Social Policy, 2025

Cost Estimates for Local Child Tax Credits Assuming Targeted Availability

This table presents cost estimates for credits that have the same maximum values mentioned above, but are more targeted to children in lower- and moderate-income families. Under this structure, this credit would begin to phase out at a rate of 21.06 percent at the point where families with three or more dependents are no longer eligible for the federal EITC (\$61,555 for heads of household and \$68,675 for joint filers in tax year 2025). This results in a more targeted credit that would still provide a full local Child Tax Credit to children in the lowest-income households.

City	Baseline Includes State and Federal CTCs		Baseline Excludes State and Federal CTCs	
	Targeted - 25% Reduction	Targeted - 50% Reduction	Targeted - 25% Reduction	Targeted - 50% Reduction
Baltimore, MD	\$211.1M	\$509.0M	\$93.8M	\$373.1M
Charlotte, NC	\$227.0M	\$533.8M	\$12.6M	\$326.3M
Chicago, IL	\$680.1M	\$1.8B	\$208.1M	\$1.2B
Denver, CO	\$158.4M	\$420.0M	-	\$69.1M
Denver, CO (Without FATC)*	\$166.7M	\$383.7M	\$22.8M	\$234.2M
Houston, TX	\$838.9M	\$1.9B	\$243.0M	\$1.3B
Jacksonville, FL	\$346.4M	\$817.7M	-	\$450.9M
Los Angeles, CA	\$1.22B	\$2.9B	\$691.5M	\$2.3B
Minneapolis, MN	\$131.2M	\$254.0M	-	\$25.5M
New York City, NY (state CTC as % match of federal credit)	\$3.0B	\$7.9B	\$768.9M	\$5.0B
New York City, NY (expanded state CTC in TY 2026)**	\$2.7B	\$7.5B	\$423.1M	\$4.5B
Oakland, CA	\$126.5M	\$377.8M	\$61.8M	\$279.0M
Philadelphia, PA	\$544.0M	\$1.1B	\$241.2M	\$937.7M
Phoenix, AZ	\$489.4M	\$1.28B	\$86.5M	\$779.1M
Seattle, WA	\$55.9M	\$171.9M	\$5.3M	\$127.4M
Washington, D.C.	\$144.5M	\$315.2M	\$65.5M	\$260.3M

*Denver (No FATC): The Family Affordability Tax Credit is a refundable credit for Colorado residents with children under 17, with income limits. Due to a projected decrease in state revenue, stemming in part from federal policy changes, the FATC may be eliminated for the 2026 and 2027 tax years. This row demonstrates the costs needed assuming the FATC is not funded.

**New York City (Expanded CTC): New York has expanded its state child tax credit for Tax Year 2026. The expanded credit is set to sunset after Tax Year 2028.

Source: Institute on Taxation and Economic Policy, Columbia Center on Poverty and Social Policy, 2025

Tax Change by Income Group for 50% Poverty Reduction When Baseline Excludes Federal and State Credits

City	Income group	Income Range		Tax change by income group, 2025		Share of total tax benefits going to group	
		Low	High	Tax Change as a % of Income		Universal	Targeted
				Universal	Targeted	Universal	Targeted
Baltimore, MD	Bottom 20%	\$0	\$22,338	-12.20%	-12.20%	22.84%	26.03%
	Second 20%	\$22,339	\$42,603	-5.17%	-5.17%	26.79%	30.52%
	Middle 20%	\$42,604	\$70,862	-3.49%	-3.48%	30.60%	34.77%
	Fourth 20%	\$70,863	\$126,632	-0.89%	-0.46%	13.45%	8.01%
	Top 20%	\$126,633	And Above	-0.15%	0.00%	5.91%	0.19%
Charlotte, NC	Bottom 20%	\$0	\$25,658	-7.45%	-7.45%	27.12%	33.83%
	Second 20%	\$25,659	\$48,076	-3.12%	-3.12%	28.40%	35.43%
	Middle 20%	\$48,077	\$80,439	-1.42%	-1.31%	22.33%	25.67%
	Fourth 20%	\$80,440	\$135,212	-0.58%	-0.12%	15.45%	3.95%
	Top 20%	\$135,213	And Above	-0.07%	0.00%	5.99%	0.23%
Chicago, IL	Bottom 20%	\$0	\$24,588	-8.34%	-8.34%	22.59%	28.70%
	Second 20%	\$24,589	\$48,676	-4.37%	-4.37%	32.12%	40.81%
	Middle 20%	\$48,677	\$87,629	-1.69%	-1.53%	22.51%	26.05%
	Fourth 20%	\$87,630	\$129,681	-0.59%	-0.09%	13.13%	2.62%
	Top 20%	\$129,682	And Above	-0.12%	-0.01%	8.66%	0.57%
Denver, CO	Bottom 20%	\$0	\$29,566	-2.41%	-2.41%	37.14%	44.93%
	Second 20%	\$29,567	\$58,003	-0.67%	-0.67%	30.12%	36.43%
	Middle 20%	\$58,004	\$93,168	-0.28%	-0.16%	21.24%	14.82%
	Fourth 20%	\$93,169	\$141,898	-0.07%	-0.01%	8.46%	1.54%
	Top 20%	\$141,899	And Above	0.00%	0.00%	1.15%	0.00%
Denver (Without FATC)	Bottom 20%	\$0	\$29,566	-7.76%	-7.76%	34.01%	42.70%
	Second 20%	\$29,567	\$58,003	-2.16%	-2.16%	27.58%	34.63%
	Middle 20%	\$58,004	\$93,168	-0.95%	-0.69%	20.14%	18.54%
	Fourth 20%	\$93,169	\$141,898	-0.29%	-0.05%	9.85%	1.95%
	Top 20%	\$141,899	And Above	-0.06%	0.00%	6.69%	0.01%

Tax change by income group, 2025

City	Income group	Income Range		Tax Change as a % of Income		Share of total tax benefits going to group	
		Low	High	Universal	Targeted	Universal	Targeted
Houston, TX	Bottom 20%	\$0	\$20,767	-10.93%	-10.93%	21.36%	25.69%
	Second 20%	\$20,768	\$39,451	-6.08%	-6.08%	29.08%	34.98%
	Middle 20%	\$39,452	\$69,426	-2.65%	-2.65%	22.70%	27.28%
	Fourth 20%	\$69,427	\$130,171	-1.18%	-0.56%	18.21%	10.34%
	Top 20%	\$130,172	And Above	-0.13%	-0.01%	7.70%	0.56%
Jacksonville, FL	Bottom 20%	\$0	\$22,795	-5.97%	-6.20%	16.78%	20.56%
	Second 20%	\$22,796	\$41,065	-4.63%	-4.81%	30.73%	37.65%
	Middle 20%	\$41,066	\$69,382	-2.20%	-2.28%	25.06%	30.65%
	Fourth 20%	\$69,383	\$129,993	-1.05%	-0.45%	21.22%	10.82%
	Top 20%	\$129,994	And Above	-0.08%	0.00%	6.06%	0.15%
Los Angeles, CA	Bottom 20%	\$0	\$22,469	-10.06%	-10.06%	19.46%	24.52%
	Second 20%	\$22,470	\$44,610	-5.65%	-5.65%	27.71%	34.92%
	Middle 20%	\$44,611	\$80,131	-2.77%	-2.69%	24.69%	30.23%
	Fourth 20%	\$80,132	\$141,198	-1.11%	-0.45%	18.06%	9.20%
	Top 20%	\$141,199	And Above	-0.16%	-0.01%	9.58%	0.51%
Minneapolis, MN	Bottom 20%	\$0	\$26,940	-1.08%	-1.08%	30.90%	34.85%
	Second 20%	\$26,941	\$49,949	-0.57%	-0.57%	41.33%	46.61%
	Middle 20%	\$49,950	\$76,450	-0.13%	-0.12%	14.72%	15.02%
	Fourth 20%	\$76,451	\$120,913	-0.05%	-0.01%	9.34%	3.02%
	Top 20%	\$120,914	And Above	-0.01%	0.00%	3.30%	0.04%
New York City, NY (state CTC as % match of federal credit)	Bottom 20%	\$0	\$25,458	-8.71%	-8.71%	21.76%	24.25%
	Second 20%	\$25,459	\$51,665	-4.77%	-4.76%	30.62%	34.07%
	Middle 20%	\$51,666	\$90,551	-1.88%	-1.75%	22.02%	22.85%
	Fourth 20%	\$90,552	\$143,631	-0.86%	-0.59%	17.12%	13.09%
	Top 20%	\$143,632	And Above	-0.11%	-0.06%	7.05%	4.17%
New York City, NY (expanded state CTC in TY 2026)	Bottom 20%	\$0	\$25,458	-7.99%	-7.98%	21.95%	24.59%
	Second 20%	\$25,459	\$51,665	-4.37%	-4.36%	30.88%	34.54%
	Middle 20%	\$51,666	\$90,551	-1.72%	-1.59%	22.20%	23.00%
	Fourth 20%	\$90,552	\$143,631	-0.78%	-0.51%	17.03%	12.56%
	Top 20%	\$143,632	And Above	-0.09%	-0.05%	6.50%	3.70%

Appendix Table A5 (continued)

		Tax change by income group, 2025					
City	Income group	Income Range		Tax Change as a % of Income		Share of total tax benefits going to group	
		Low	High	Universal	Targeted	Universal	Targeted
Oakland, CA	Bottom 20%	\$0	\$28,745	-10.45%	-10.45%	23.86%	30.32%
	Second 20%	\$28,746	\$56,778	-4.27%	-4.27%	25.59%	32.52%
	Middle 20%	\$56,779	\$96,024	-2.32%	-2.02%	24.66%	27.30%
	Fourth 20%	\$96,025	\$149,999	-0.89%	-0.34%	15.97%	7.71%
	Top 20%	\$150,000	And Above	-0.13%	-0.01%	8.66%	0.55%
Philadelphia, PA	Bottom 20%	\$0	\$18,647	-10.62%	-10.62%	17.12%	21.33%
	Second 20%	\$18,648	\$39,028	-6.57%	-6.57%	27.81%	34.64%
	Middle 20%	\$39,029	\$67,257	-2.67%	-2.67%	21.73%	27.06%
	Fourth 20%	\$67,258	\$121,060	-1.52%	-0.94%	20.76%	16.02%
	Top 20%	\$121,061	And Above	-0.27%	-0.01%	12.10%	0.35%
Phoenix, AZ	Bottom 20%	\$0	\$21,272	-9.40%	-9.40%	19.58%	23.41%
	Second 20%	\$21,273	\$41,574	-5.93%	-5.93%	30.70%	36.70%
	Middle 20%	\$41,575	\$64,204	-2.08%	-2.08%	19.42%	23.21%
	Fourth 20%	\$64,205	\$118,475	-1.35%	-0.83%	20.67%	15.11%
	Top 20%	\$118,476	And Above	-0.17%	-0.01%	8.96%	0.77%
Seattle, WA	Bottom 20%	\$0	\$45,856	-2.78%	-2.78%	29.00%	54.04%
	Second 20%	\$45,857	\$78,426	-0.55%	-0.55%	13.75%	25.21%
	Middle 20%	\$78,427	\$125,394	-0.59%	-0.18%	24.84%	14.30%
	Fourth 20%	\$125,395	\$180,270	-0.29%	-0.01%	17.28%	0.96%
	Top 20%	\$180,271	And Above	-0.07%	0.00%	12.82%	1.18%
Washington, D.C.	Bottom 20%	\$0	\$25,902	-9.33%	-9.33%	36.31%	41.89%
	Second 20%	\$25,903	\$58,025	-3.10%	-3.10%	37.07%	42.76%
	Middle 20%	\$58,026	\$112,646	-0.88%	-0.58%	19.90%	15.11%
	Fourth 20%	\$112,647	\$156,407	-0.13%	0.00%	4.93%	0.13%
	Top 20%	\$156,408	And Above	-0.01%	0.00%	1.70%	0.00%

Tax Change by Income Group for 50% Poverty Reduction When Baseline Includes Federal and State Credits

City	Income group	Income Range		Tax change by income group, 2025		Share of total tax benefits going to group	
		Low	High	Tax Change as a % of Income		Universal	Targeted
				Universal	Targeted	Universal	Targeted
Baltimore, MD	Bottom 20%	\$0	\$22,338	-16.37%	-16.37%	22.45%	25.62%
	Second 20%	\$22,339	\$42,603	-6.94%	-6.94%	26.33%	30.04%
	Middle 20%	\$42,604	\$70,862	-4.68%	-4.67%	30.08%	34.25%
	Fourth 20%	\$70,863	\$126,632	-1.20%	-0.73%	13.37%	9.30%
	Top 20%	\$126,633	And Above	-0.25%	-0.01%	7.36%	0.32%
Charlotte, NC	Bottom 20%	\$0	\$25,658	-11.79%	-11.79%	26.06%	32.75%
	Second 20%	\$25,659	\$48,076	-4.94%	-4.94%	27.30%	34.30%
	Middle 20%	\$48,077	\$80,439	-2.26%	-2.14%	21.46%	25.62%
	Fourth 20%	\$80,440	\$135,212	-0.95%	-0.30%	15.42%	6.17%
	Top 20%	\$135,213	And Above	-0.16%	0.00%	9.08%	0.29%
Chicago, IL	Bottom 20%	\$0	\$24,588	-12.24%	-12.24%	21.78%	27.78%
	Second 20%	\$24,589	\$48,676	-6.42%	-6.42%	30.97%	39.51%
	Middle 20%	\$48,677	\$87,629	-2.48%	-2.32%	21.72%	26.00%
	Fourth 20%	\$87,630	\$129,681	-0.91%	-0.25%	13.13%	4.54%
	Top 20%	\$129,682	And Above	-0.25%	-0.02%	11.46%	0.95%
Denver, CO	Bottom 20%	\$0	\$29,566	-13.39%	-13.39%	31.52%	41.05%
	Second 20%	\$29,567	\$58,003	-3.72%	-3.72%	25.56%	33.29%
	Middle 20%	\$58,004	\$93,168	-1.64%	-1.33%	18.78%	19.87%
	Fourth 20%	\$93,169	\$141,898	-0.56%	-0.15%	10.10%	3.48%
	Top 20%	\$141,899	And Above	-0.21%	0.00%	12.44%	0.22%
Denver (Without FATC)	Bottom 20%	\$0	\$29,566	-12.32%	-12.32%	31.89%	41.35%
	Second 20%	\$29,567	\$58,003	-3.42%	-3.42%	25.86%	33.53%
	Middle 20%	\$58,004	\$93,168	-1.51%	-1.21%	18.99%	19.69%
	Fourth 20%	\$93,169	\$141,898	-0.51%	-0.12%	10.10%	3.19%
	Top 20%	\$141,899	And Above	-0.18%	0.00%	11.53%	0.15%

Appendix Table A6 (continued)

		Tax change by income group, 2025					
City	Income group	Income Range		Tax Change as a % of Income		Share of total tax benefits going to group	
		Low	High	Universal	Targeted	Universal	Targeted
Houston, TX	Bottom 20%	\$0	\$20,767	-16.04%	-16.04%	20.81%	25.03%
	Second 20%	\$20,768	\$39,451	-8.92%	-8.92%	28.33%	34.07%
	Middle 20%	\$39,452	\$69,426	-3.89%	-3.89%	22.11%	26.58%
	Fourth 20%	\$69,427	\$130,171	-1.75%	-1.00%	17.98%	12.32%
	Top 20%	\$130,172	And Above	-0.26%	-0.02%	9.84%	0.89%
Jacksonville, FL	Bottom 20%	\$0	\$22,795	-10.80%	-10.80%	16.04%	19.73%
	Second 20%	\$22,796	\$41,065	-8.37%	-8.37%	29.38%	36.14%
	Middle 20%	\$41,066	\$69,382	-3.98%	-3.98%	23.96%	29.44%
	Fourth 20%	\$69,383	\$129,993	-1.92%	-1.07%	20.63%	14.15%
	Top 20%	\$129,994	And Above	-0.24%	-0.01%	9.86%	0.37%
Los Angeles, CA	Bottom 20%	\$0	\$22,469	-12.40%	-12.40%	19.08%	24.05%
	Second 20%	\$22,470	\$44,610	-6.96%	-6.96%	27.17%	34.25%
	Middle 20%	\$44,611	\$80,131	-3.41%	-3.33%	24.20%	29.81%
	Fourth 20%	\$80,132	\$141,198	-1.39%	-0.65%	17.95%	10.52%
	Top 20%	\$141,199	And Above	-0.23%	-0.01%	11.11%	0.76%
Minneapolis, MN	Bottom 20%	\$0	\$26,940	-10.15%	-10.15%	25.96%	32.86%
	Second 20%	\$26,941	\$49,949	-5.33%	-5.33%	34.73%	43.95%
	Middle 20%	\$49,950	\$76,450	-1.20%	-1.19%	12.37%	15.47%
	Fourth 20%	\$76,451	\$120,913	-0.57%	-0.30%	9.29%	6.29%
	Top 20%	\$120,914	And Above	-0.36%	-0.02%	17.30%	0.99%
New York City, NY (state CTC as % match of federal credit)	Bottom 20%	\$0	\$25,458	-12.83%	-12.82%	20.94%	22.75%
	Second 20%	\$25,459	\$51,665	-7.02%	-7.01%	29.47%	31.99%
	Middle 20%	\$51,666	\$90,551	-2.77%	-2.64%	21.21%	21.97%
	Fourth 20%	\$90,552	\$143,631	-1.32%	-1.05%	17.25%	14.89%
	Top 20%	\$143,632	And Above	-0.23%	-0.15%	9.76%	6.91%
New York City, NY (expanded state CTC in TY 2026)	Bottom 20%	\$0	\$25,458	-12.34%	-12.34%	21.02%	22.90%
	Second 20%	\$25,459	\$51,665	-6.75%	-6.74%	29.58%	32.18%
	Middle 20%	\$51,666	\$90,551	-2.66%	-2.53%	21.29%	22.06%
	Fourth 20%	\$90,552	\$143,631	-1.27%	-1.00%	17.25%	14.76%
	Top 20%	\$143,632	And Above	-0.21%	-0.14%	9.49%	6.60%

Appendix Table A6 (continued)

		Tax change by income group, 2025					
City	Income group	Income Range		Tax Change as a % of Income		Share of total tax benefits going to group	
		Low	High	Universal	Targeted	Universal	Targeted
Oakland, CA	Bottom 20%	\$0	\$28,745	-13.72%	-13.72%	23.19%	29.42%
	Second 20%	\$28,746	\$56,778	-5.61%	-5.61%	24.87%	31.55%
	Middle 20%	\$56,779	\$96,024	-3.05%	-2.75%	23.99%	27.44%
	Fourth 20%	\$96,025	\$149,999	-1.20%	-0.55%	15.87%	9.25%
	Top 20%	\$150,000	And Above	-0.23%	-0.01%	10.86%	0.79%
Philadelphia, PA	Bottom 20%	\$0	\$18,647	-12.62%	-12.62%	16.89%	21.08%
	Second 20%	\$18,648	\$39,028	-7.82%	-7.82%	27.44%	34.25%
	Middle 20%	\$39,029	\$67,257	-3.18%	-3.18%	21.44%	26.75%
	Fourth 20%	\$67,258	\$121,060	-1.82%	-1.18%	20.57%	16.71%
	Top 20%	\$121,061	And Above	-0.36%	-0.01%	13.18%	0.61%
Phoenix, AZ	Bottom 20%	\$0	\$21,272	-15.04%	-15.04%	19.10%	22.87%
	Second 20%	\$21,273	\$41,574	-9.48%	-9.48%	29.95%	35.86%
	Middle 20%	\$41,575	\$64,204	-3.32%	-3.32%	18.94%	22.68%
	Fourth 20%	\$64,205	\$118,475	-2.19%	-1.49%	20.41%	16.65%
	Top 20%	\$118,476	And Above	-0.33%	-0.03%	10.94%	1.16%
Seattle, WA	Bottom 20%	\$0	\$45,856	-3.56%	-3.56%	26.90%	51.35%
	Second 20%	\$45,857	\$78,426	-0.71%	-0.70%	12.75%	24.04%
	Middle 20%	\$78,427	\$125,394	-0.76%	-0.29%	23.32%	16.82%
	Fourth 20%	\$125,395	\$180,270	-0.41%	-0.02%	17.45%	2.03%
	Top 20%	\$180,271	And Above	-0.13%	-0.01%	17.44%	1.67%
Washington, D.C.	Bottom 20%	\$0	\$25,902	-11.20%	-11.20%	35.76%	41.52%
	Second 20%	\$25,903	\$58,025	-3.72%	-3.72%	36.51%	42.38%
	Middle 20%	\$58,026	\$112,646	-1.06%	-0.73%	19.69%	15.78%
	Fourth 20%	\$112,647	\$156,407	-0.19%	-0.01%	5.91%	0.21%
	Top 20%	\$156,408	And Above	-0.02%	0.00%	2.04%	0.00%

Tax Change by Income Group for 25% Poverty Reduction When Baseline Excludes Federal and State Credits

City	Income group	Income Range		Tax Change as a % of Income		Share of total tax benefits going to group	
		Low	High	Universal	Targeted	Universal	Targeted
		Tax change by income group, 2025					
Baltimore, MD	Bottom 20%	\$0	\$22,338	-2.57%	-3.21%	24.47%	27.25%
	Second 20%	\$22,339	\$42,603	-1.09%	-1.36%	28.69%	31.96%
	Middle 20%	\$42,604	\$70,862	-0.73%	-0.91%	32.77%	36.13%
	Fourth 20%	\$70,863	\$126,632	-0.16%	-0.06%	12.44%	4.01%
	Top 20%	\$126,633	And Above	-0.01%	0.00%	1.19%	0.17%
Charlotte, NC	Bottom 20%	\$0	\$25,658	-0.31%	-0.31%	30.44%	36.38%
	Second 20%	\$25,659	\$48,076	-0.13%	-0.13%	31.88%	38.11%
	Middle 20%	\$48,077	\$80,439	-0.06%	-0.05%	25.06%	23.15%
	Fourth 20%	\$80,440	\$135,212	-0.02%	0.00%	11.48%	1.27%
	Top 20%	\$135,213	And Above	0.00%	0.00%	0.34%	0.14%
Chicago, IL	Bottom 20%	\$0	\$24,588	-1.56%	-1.56%	25.39%	30.32%
	Second 20%	\$24,589	\$48,676	-0.82%	-0.82%	36.10%	43.12%
	Middle 20%	\$48,677	\$87,629	-0.31%	-0.25%	25.04%	24.14%
	Fourth 20%	\$87,630	\$129,681	-0.08%	-0.01%	10.37%	0.80%
	Top 20%	\$129,682	And Above	0.00%	0.00%	2.00%	0.29%
Denver, CO	Bottom 20%	\$0	\$29,566	0.00%	0.00%	0.00%	0.00%
	Second 20%	\$29,567	\$58,003	0.00%	0.00%	0.00%	0.00%
	Middle 20%	\$58,004	\$93,168	0.00%	0.00%	0.00%	0.00%
	Fourth 20%	\$93,169	\$141,898	0.00%	0.00%	0.00%	0.00%
	Top 20%	\$141,899	And Above	0.00%	0.00%	0.00%	0.00%
Denver (Without FATC)	Bottom 20%	\$0	\$29,566	-0.80%	-0.80%	38.55%	45.40%
	Second 20%	\$29,567	\$58,003	-0.22%	-0.22%	31.26%	36.82%
	Middle 20%	\$58,004	\$93,168	-0.09%	-0.05%	20.71%	13.96%
	Fourth 20%	\$93,169	\$141,898	-0.02%	0.00%	7.28%	1.52%
	Top 20%	\$141,899	And Above	0.00%	0.00%	0.24%	0.00%

Appendix Table A7 (continued)

		Tax change by income group, 2025					
City	Income group	Income Range		Tax Change as a % of Income		Share of total tax benefits going to group	
		Low	High	Universal	Targeted	Universal	Targeted
Houston, TX	Bottom 20%	\$0	\$20,767	-2.19%	-2.19%	23.16%	27.17%
	Second 20%	\$20,768	\$39,451	-1.22%	-1.22%	31.53%	36.98%
	Middle 20%	\$39,452	\$69,426	-0.53%	-0.53%	24.62%	28.74%
	Fourth 20%	\$69,427	\$130,171	-0.21%	-0.06%	17.69%	5.51%
	Top 20%	\$130,172	And Above	-0.01%	0.00%	1.96%	0.38%
Jacksonville, FL	Bottom 20%	\$0	\$22,795	0.00%	0.00%	0.00%	0.00%
	Second 20%	\$22,796	\$41,065	0.00%	0.00%	0.00%	0.00%
	Middle 20%	\$41,066	\$69,382	0.00%	0.00%	0.00%	0.00%
	Fourth 20%	\$69,383	\$129,993	0.00%	0.00%	0.00%	0.00%
	Top 20%	\$129,994	And Above	0.00%	0.00%	0.00%	0.00%
Los Angeles, CA	Bottom 20%	\$0	\$22,469	-3.28%	-3.28%	21.31%	26.43%
	Second 20%	\$22,470	\$44,610	-1.84%	-1.84%	30.34%	37.62%
	Middle 20%	\$44,611	\$80,131	-0.90%	-0.84%	27.02%	31.22%
	Fourth 20%	\$80,132	\$141,198	-0.32%	-0.06%	17.53%	3.84%
	Top 20%	\$141,199	And Above	-0.02%	0.00%	3.27%	0.22%
Minneapolis, MN	Bottom 20%	\$0	\$26,940	0.00%	0.00%	0.00%	0.00%
	Second 20%	\$26,941	\$49,949	0.00%	0.00%	0.00%	0.00%
	Middle 20%	\$49,950	\$76,450	0.00%	0.00%	0.00%	0.00%
	Fourth 20%	\$76,451	\$120,913	0.00%	0.00%	0.00%	0.00%
	Top 20%	\$120,914	And Above	0.00%	0.00%	0.00%	0.00%
New York City, NY <i>(state CTC as % match of federal credit)</i>	Bottom 20%	\$0	\$25,458	-1.69%	-1.69%	24.98%	30.74%
	Second 20%	\$25,459	\$51,665	-0.93%	-0.92%	35.15%	43.08%
	Middle 20%	\$51,666	\$90,551	-0.36%	-0.26%	24.95%	22.21%
	Fourth 20%	\$90,552	\$143,631	-0.11%	-0.01%	12.44%	1.88%
	Top 20%	\$143,632	And Above	0.00%	0.00%	0.85%	0.08%
New York City, NY <i>(expanded state CTC in TY 2026)</i>	Bottom 20%	\$0	\$25,458	-0.97%	-0.97%	25.88%	31.91%
	Second 20%	\$25,459	\$51,665	-0.53%	-0.53%	36.41%	44.71%
	Middle 20%	\$51,666	\$90,551	-0.20%	-0.13%	25.55%	20.50%
	Fourth 20%	\$90,552	\$143,631	-0.05%	0.00%	10.17%	0.76%
	Top 20%	\$143,632	And Above	0.00%	0.00%	0.30%	0.04%

Appendix Table A7 (continued)

City	Income group	Income Range		Tax change by income group, 2025		Share of total tax benefits going to group	
		Low	High	Tax Change as a % of Income		Universal	Targeted
				Universal	Targeted	Universal	Targeted
Oakland, CA	Bottom 20%	\$0	\$28,745	-2.46%	-2.66%	26.87%	34.88%
	Second 20%	\$28,746	\$56,778	-1.00%	-1.09%	28.82%	37.41%
	Middle 20%	\$56,779	\$96,024	-0.54%	-0.41%	27.34%	24.89%
	Fourth 20%	\$96,025	\$149,999	-0.17%	-0.01%	14.18%	0.69%
	Top 20%	\$150,000	And Above	0.00%	0.00%	1.37%	0.28%
Philadelphia, PA	Bottom 20%	\$0	\$18,647	-2.87%	-2.87%	18.78%	22.40%
	Second 20%	\$18,648	\$39,028	-1.78%	-1.78%	30.50%	36.39%
	Middle 20%	\$39,029	\$67,257	-0.72%	-0.72%	23.83%	28.42%
	Fourth 20%	\$67,258	\$121,060	-0.39%	-0.18%	21.44%	12.13%
	Top 20%	\$121,061	And Above	-0.03%	0.00%	4.93%	0.02%
Phoenix, AZ	Bottom 20%	\$0	\$21,272	-1.13%	-1.13%	21.16%	25.30%
	Second 20%	\$21,273	\$41,574	-0.71%	-0.71%	33.18%	39.67%
	Middle 20%	\$41,575	\$64,204	-0.25%	-0.25%	20.99%	25.09%
	Fourth 20%	\$64,205	\$118,475	-0.15%	-0.06%	20.69%	9.05%
	Top 20%	\$118,476	And Above	-0.01%	0.00%	3.26%	0.03%
Seattle, WA	Bottom 20%	\$0	\$45,856	-0.14%	-0.14%	43.84%	66.10%
	Second 20%	\$45,857	\$78,426	-0.03%	-0.03%	20.79%	27.81%
	Middle 20%	\$78,427	\$125,394	-0.02%	0.00%	27.52%	0.52%
	Fourth 20%	\$125,395	\$180,270	0.00%	0.00%	1.27%	0.31%
	Top 20%	\$180,271	And Above	0.00%	0.00%	3.08%	0.00%
Washington, D.C.	Bottom 20%	\$0	\$25,902	-2.49%	-2.49%	39.01%	44.40%
	Second 20%	\$25,903	\$58,025	-0.83%	-0.83%	39.83%	45.33%
	Middle 20%	\$58,026	\$112,646	-0.22%	-0.10%	19.89%	10.02%
	Fourth 20%	\$112,647	\$156,407	-0.01%	0.00%	1.17%	0.13%
	Top 20%	\$156,408	And Above	0.00%	0.00%	0.01%	0.00%

Tax Change by Income Group for 25% Poverty Reduction When Baseline Includes Federal and State Credits

City	Income group	Income Range		Tax change by income group, 2025		Share of total tax benefits going to group	
		Low	High	Tax Change as a % of Income		Universal	Targeted
				Universal	Targeted	Universal	Targeted
Baltimore, MD	Bottom 20%	\$0	\$22,338	-7.06%	-7.06%	23.50%	26.64%
	Second 20%	\$22,339	\$42,603	-2.99%	-2.99%	27.55%	31.24%
	Middle 20%	\$42,604	\$70,862	-2.02%	-2.01%	31.48%	35.52%
	Fourth 20%	\$70,863	\$126,632	-0.50%	-0.20%	13.37%	5.95%
	Top 20%	\$126,633	And Above	-0.05%	0.00%	3.67%	0.17%
Charlotte, NC	Bottom 20%	\$0	\$25,658	-5.28%	-5.28%	27.77%	34.45%
	Second 20%	\$25,659	\$48,076	-2.21%	-2.21%	29.08%	36.08%
	Middle 20%	\$48,077	\$80,439	-1.01%	-0.90%	22.86%	25.41%
	Fourth 20%	\$80,440	\$135,212	-0.39%	-0.06%	15.20%	2.97%
	Top 20%	\$135,213	And Above	-0.03%	0.00%	4.36%	0.18%
Chicago, IL	Bottom 20%	\$0	\$24,588	-4.95%	-4.95%	23.61%	29.39%
	Second 20%	\$24,589	\$48,676	-2.60%	-2.60%	33.57%	41.79%
	Middle 20%	\$48,677	\$87,629	-1.00%	-0.88%	23.49%	25.66%
	Fourth 20%	\$87,630	\$129,681	-0.33%	-0.03%	12.64%	1.48%
	Top 20%	\$129,682	And Above	-0.05%	0.00%	5.66%	0.40%
Denver, CO	Bottom 20%	\$0	\$29,566	-5.35%	-5.35%	35.35%	43.56%
	Second 20%	\$29,567	\$58,003	-1.49%	-1.49%	28.67%	35.33%
	Middle 20%	\$58,004	\$93,168	-0.65%	-0.44%	20.79%	17.30%
	Fourth 20%	\$93,169	\$141,898	-0.18%	-0.03%	9.30%	1.61%
	Top 20%	\$141,899	And Above	-0.02%	0.00%	4.11%	0.00%
Denver (Without FATC)	Bottom 20%	\$0	\$29,566	-5.62%	-5.62%	35.21%	43.45%
	Second 20%	\$29,567	\$58,003	-1.56%	-1.56%	28.56%	35.24%
	Middle 20%	\$58,004	\$93,168	-0.68%	-0.47%	20.73%	17.47%
	Fourth 20%	\$93,169	\$141,898	-0.19%	-0.03%	9.35%	1.64%
	Top 20%	\$141,899	And Above	-0.03%	0.00%	4.37%	0.00%

Tax change by income group, 2025

City	Income group	Income Range		Tax Change as a % of Income		Share of total tax benefits going to group	
		Low	High	Universal	Targeted	Universal	Targeted
Houston, TX	Bottom 20%	\$0	\$20,767	-7.29%	-7.29%	21.92%	26.24%
	Second 20%	\$20,768	\$39,451	-4.05%	-4.05%	29.84%	35.72%
	Middle 20%	\$39,452	\$69,426	-1.77%	-1.77%	23.30%	27.84%
	Fourth 20%	\$69,427	\$130,171	-0.77%	-0.30%	18.30%	8.54%
	Top 20%	\$130,172	And Above	-0.06%	0.00%	5.66%	0.49%
Jacksonville, FL	Bottom 20%	\$0	\$22,795	-4.83%	-4.83%	17.00%	20.81%
	Second 20%	\$22,796	\$41,065	-3.74%	-3.74%	31.13%	38.12%
	Middle 20%	\$41,066	\$69,382	-1.78%	-1.78%	25.39%	31.01%
	Fourth 20%	\$69,383	\$129,993	-0.84%	-0.31%	21.31%	9.73%
	Top 20%	\$129,994	And Above	-0.05%	0.00%	5.03%	0.14%
Los Angeles, CA	Bottom 20%	\$0	\$22,469	-5.62%	-5.62%	20.48%	25.67%
	Second 20%	\$22,470	\$44,610	-3.15%	-3.15%	29.15%	36.55%
	Middle 20%	\$44,611	\$80,131	-1.54%	-1.47%	25.97%	30.96%
	Fourth 20%	\$80,132	\$141,198	-0.59%	-0.15%	17.96%	5.92%
	Top 20%	\$141,199	And Above	-0.05%	0.00%	5.93%	0.25%
Minneapolis, MN	Bottom 20%	\$0	\$26,940	-5.40%	-5.40%	28.12%	33.83%
	Second 20%	\$26,941	\$49,949	-2.83%	-2.83%	37.62%	45.25%
	Middle 20%	\$49,950	\$76,450	-0.64%	-0.62%	13.40%	15.76%
	Fourth 20%	\$76,451	\$120,913	-0.29%	-0.11%	9.69%	4.56%
	Top 20%	\$120,914	And Above	-0.11%	0.00%	10.79%	0.14%
New York City, NY (state CTC as % match of federal credit)	Bottom 20%	\$0	\$25,458	-5.57%	-5.56%	22.70%	26.07%
	Second 20%	\$25,459	\$51,665	-3.04%	-3.04%	31.94%	36.60%
	Middle 20%	\$51,666	\$90,551	-1.20%	-1.07%	22.93%	23.50%
	Fourth 20%	\$90,552	\$143,631	-0.50%	-0.27%	16.42%	10.13%
	Top 20%	\$143,632	And Above	-0.04%	-0.02%	4.53%	2.01%
New York City, NY (expanded state CTC in TY 2026)	Bottom 20%	\$0	\$25,458	-5.08%	-5.08%	22.89%	26.45%
	Second 20%	\$25,459	\$51,665	-2.78%	-2.77%	32.20%	37.13%
	Middle 20%	\$51,666	\$90,551	-1.09%	-0.96%	23.11%	23.56%
	Fourth 20%	\$90,552	\$143,631	-0.45%	-0.23%	16.22%	9.47%
	Top 20%	\$143,632	And Above	-0.03%	-0.01%	4.09%	1.66%

Appendix Table A8 (continued)

		Tax change by income group, 2025					
City	Income group	Income Range		Tax Change as a % of Income		Share of total tax benefits going to group	
		Low	High	Universal	Targeted	Universal	Targeted
Oakland, CA	Bottom 20%	\$0	\$28,745	-5.12%	-5.12%	25.51%	32.78%
	Second 20%	\$28,746	\$56,778	-2.09%	-2.09%	27.36%	35.15%
	Middle 20%	\$56,779	\$96,024	-1.13%	-0.88%	26.23%	26.29%
	Fourth 20%	\$96,025	\$149,999	-0.40%	-0.07%	15.46%	3.74%
	Top 20%	\$150,000	And Above	-0.03%	0.00%	4.10%	0.31%
Philadelphia, PA	Bottom 20%	\$0	\$18,647	-6.31%	-6.31%	17.83%	21.86%
	Second 20%	\$18,648	\$39,028	-3.91%	-3.91%	28.97%	35.50%
	Middle 20%	\$39,029	\$67,257	-1.59%	-1.59%	22.63%	27.73%
	Fourth 20%	\$67,258	\$121,060	-0.89%	-0.49%	21.23%	14.27%
	Top 20%	\$121,061	And Above	-0.11%	0.00%	8.84%	0.03%
Phoenix, AZ	Bottom 20%	\$0	\$21,272	-6.02%	-6.02%	20.04%	23.85%
	Second 20%	\$21,273	\$41,574	-3.79%	-3.79%	31.43%	37.40%
	Middle 20%	\$41,575	\$64,204	-1.33%	-1.33%	19.88%	23.65%
	Fourth 20%	\$64,205	\$118,475	-0.85%	-0.48%	20.78%	13.87%
	Top 20%	\$118,476	And Above	-0.08%	0.00%	7.18%	0.42%
Seattle, WA	Bottom 20%	\$0	\$45,856	-1.35%	-1.35%	34.51%	59.99%
	Second 20%	\$45,857	\$78,426	-0.27%	-0.26%	16.37%	27.50%
	Middle 20%	\$78,427	\$125,394	-0.27%	-0.04%	27.77%	7.44%
	Fourth 20%	\$125,395	\$180,270	-0.10%	0.00%	13.84%	0.28%
	Top 20%	\$180,271	And Above	-0.01%	0.00%	4.77%	0.00%
Washington, D.C.	Bottom 20%	\$0	\$25,902	-5.29%	-5.29%	37.63%	42.77%
	Second 20%	\$25,903	\$58,025	-1.76%	-1.76%	38.41%	43.67%
	Middle 20%	\$58,026	\$112,646	-0.49%	-0.28%	20.22%	13.32%
	Fourth 20%	\$112,647	\$156,407	-0.04%	0.00%	2.74%	0.13%
	Top 20%	\$156,408	And Above	0.00%	0.00%	0.90%	0.00%

Appendix B. Technical Appendix

Methodology for Estimating the Anti-Poverty Effects of Local Child Tax Credits

Data

To estimate the anti-poverty effects of local Child Tax Credits, we use data from the American Community Survey (ACS), supplemented with variables related to the Supplemental Poverty Measure (SPM) developed by Fox, Glassman, and Pacas (2020). The ACS data used in this analysis were retrieved from IPUMS USA (Ruggles et al. 2025), including the variables related to the Supplemental Poverty Measure. Estimates of poverty measured using the SPM typically rely on data from the Current Population Survey Annual Social and Economic Supplement (CPS ASEC) as the CPS ASEC includes detailed income and program participation data required to construct the SPM, such as noncash transfers, tax credits, and necessary expenditures. However, the CPS ASEC does not have sufficient sample size for producing local-level estimates. The American Community Survey (ACS) offers a substantially larger sample size and more granular geographic coverage than the Current Population Survey Annual Social and Economic Supplement (CPS ASEC), making it well-suited for generating reliable estimates at the state and sub-state levels. Not all of the requisite data for measuring poverty under the SPM is available in the ACS, but the U.S. Census Bureau has developed an experimental ACS-SPM series where these missing components are imputed. (For additional information on this series, see Fox, Glassman, and Pacas (2020)). For our analysis, we use the ACS-SPM data series as well as the core variables available in the ACS.

In comparing national and state-level estimates from the ACS-SPM to estimates from the CPS-ASEC, we found that poverty rates in this experimental series were typically higher than those estimated using the CPS-ASEC. As the CPS-ASEC is the official dataset used to measure poverty under the SPM, we designed a method to improve the alignment of ACS-based estimates with those from the CPS ASEC. We apply a raking adjustment (iterative proportional fitting) to recalibrate the ACS person-level weights. This procedure adjusts the weights so that the marginal distributions of key variables – age group, race/ethnicity, sex, highest educational attainment in the household, and SPM poverty brackets – conform to corresponding distributions in the CPS ASEC. By addressing differences in survey design, measurement, and coverage, this reweighting enhances the validity of ACS-based SPM estimates for use in state and small-area estimates or subgroup analyses.

Modeling Approach

We measure poverty rates and poverty reduction using the SPM. We identify families in our study localities using city identifier variables produced by IPUMS-USA (Ruggles et al 2025). For localities that were not immediately identifiable, we used a population-weighted approach based on the composition of localities in relation to Public Use Microdata Areas. Population shares were retrieved via the Missouri Census Data Center's Geographic Correspondence Engine.³⁶

Modeling the federal, state, and local Child Tax Credits followed a similar approach. Tax units and tax-related variables (e.g., adjusted gross income and tax filing type) were constructed in the ACS data using a methodology mirroring the approach used by the U.S. Census Bureau when developing tax units in the CPS-ASEC.³⁷ For each credit, the relevant credit amounts were assigned to each tax unit in the data based on their federal adjusted gross income, earned income, number of eligible dependents, and filing type. Credit amounts were adjusted based on the relevant phaseout rates of each credit and then aggregated at the SPM unit level and added to each unit's resources used to evaluate poverty status. In each case, credit amounts and phaseout thresholds were adjusted for inflation from 2025 dollars to the relevant data year. For example, when modeling a credit in the 2022 ACS, credit parameters were deflated from 2025 dollars to 2022 dollars using the Consumer Price Index for All Urban Consumers. This updated resource measure was then compared to each unit's SPM threshold to determine each unit's poverty status after accounting for federal, state, and local Child Tax Credits. For a full list of the parameters used to model state-level Child Tax Credits, see Appendix Table B1. The most recent version of each state's Child Tax Credit policy was used when modeling credit amounts. The local Earned Income Credit policy was also modeled for New York City. Similarly, the federal Child Tax Credit was modeled based on the parameters incorporated into law with the passage of the OBBBA, also known as the federal budget reconciliation bill, H.R.1, in July 2025.

To determine the local Child Tax Credit amounts that would result in child poverty reductions of 25 percent and 50 percent in combination with federal and state Child Tax Credits, we first subtracted all Child Tax Credit amounts from each unit's resources and recalculated their poverty status. This was used as the baseline poverty rate. The federal and state Child Tax Credits were then added to resources and poverty was recalculated to determine the relative reductions in poverty attributable to federal and state credits. We then modeled local Child Tax Credit amounts in \$100 increments based on two designs: (1) a more universal design with 5 percent benefit phaseout for joint filers after \$110,000

of income and \$75,000 for heads of household, mirroring the federal Child Tax Credit income phase out in place prior to the 2017 Tax Cuts and Jobs Act, and (2) a more targeted approach with a structure that mirrored the structure of the federal EITC for families with three or more dependents. We also applied a 20 percent bonus to credits for children under the age of 6. At each \$100 credit increment, we recalculated each unit's poverty to determine the relative reduction in poverty attributable to the local Child Tax Credit in combination with the effects of the federal and state credits. We repeated this process until we found the credit amounts that would result in 25 percent and 50 percent reductions in child poverty in each locality relative to the pre-credit baseline.

Methodology for Estimating the Costs of Proposed Local Child Tax Credits

We use the ITEP Microsimulation Tax Model to analyze costs and impacts across the income distribution of local Child Tax Credit policies. ITEP assigns each observation in our Microsimulation model a probability weight of living within a specific locality. These probability weights are calculated through a match with the American Community Survey.

American Community Survey individual and household level data are broken down into tax units, and then a crosswalk between the 5-year sample and our microsimulation model is produced, using several characteristics present in both data sets. These include income, marital status, homeownership, age, and number and age of children. For the purposes of ITEP's model, income for each tax unit includes wage and salary earnings, retirement income, child support, unemployment compensation, worker's compensation, and other income from public supports and financial assistance.

The geographic boundaries of each locality are determined by aggregating Public Use Microdata Areas – the smallest geography available within the American Community Survey microdata – to best match each local tax jurisdiction. The resulting estimates are then checked against published data from the U.S. Census Bureau, Internal Revenue Service, and state revenue departments to ensure that they accurately reflect the income and demographic profile of the locality.

For additional information about the ITEP Microsimulation Tax Model, visit [ITEP.org/itep-tax-model](https://www.itep.org/itep-tax-model).

State-level Child Tax Credit policy parameters used in modeling the effects of state Child Tax Credit policies on child poverty in each locality

State	Age Eligibility	Maximum Credit per Child in Tax Year 2025	Phaseout Threshold in Tax Year 2025	Phaseout Rate
California	Under 6	\$1,192*/household	\$27,494	21.67%
Colorado	CTC: Under 6 FATC: Under 17	CTC: \$1,200; FATC*: \$3,730/child under 6, \$2,454/child ages 6-16	CTC*: \$26,000 (single), \$36,000 (joint) FATC*: \$15,000 (single), \$26,000 (joint)	CTC: Stepwise reduction of \$400 for every \$25,000 above threshold; FATC: 6.875%
Illinois	Under 12	40% of the state EITC	Same as federal EITC phaseouts	Phases out with match
Maryland	Under 6	\$500	\$15,000	5% phaseout rate per child
Minnesota	CTC: Under 18 WFC: 18 to 23 and in school	CTC: \$1,750 WFC*: \$1,000 for one older dependent; \$2,270 for two; \$2,710 for three or more	\$31,930* (single), \$37,890* (joint)	12% if eligible for both the CTC and WFC; 9% if only eligible for the WFC
New York (% match of federal CTC)	Under 17	\$330	\$75,000 (single), \$110,000 (joint)	1.65%
New York (expanded TY 2026 version)	Under 17	\$1,000/child under 4, \$500/child 4-16	\$75,000 (single), \$110,000 (joint)	1.65%

*2025 dollar values are estimated based on legislated dollar amounts and prescribed indexation of dollar amounts for inflation. See Vinh et al 2025 Appendix Table B1 for legislated dollar amounts in the year of latest legislation and indexation methodology details. Actual 2025 dollar amounts may differ slightly from reported here based on state indexation formulae.

Endnotes

1. U.S. Census Bureau, Poverty in the United States: 2024, Report No. P60-287, September 9, 2025. <https://www.census.gov/library/publications/2025/demo/p60-287.html>
2. Ryan Vinh, Danielle Wilson, Sophie Collyer, Megan Curran, and Christopher Wimer, “Assessing the Potential Impacts of Refundable State Child Tax Credit Designs on Child Poverty,” Center on Poverty and Social Policy, Columbia University, April 21, 2025. <https://povertycenter.columbia.edu/publication/2025/refundable-state-child-tax-credit-designs>
3. Neva Butkus, “State Child Tax Credits Boosted Financial Security for Families and Children in 2025,” Institute on Taxation and Economic Policy, September 11, 2025. <https://itep.org/state-child-tax-credits-2025/>
4. The average child poverty rate among children in U.S. cities is roughly 20 percent versus 12.5 percent nationally, when estimated in the American Community Survey data (the source of poverty statistics in this report). See Appendix B for additional information on this data.
5. Institute on Taxation and Economic Policy, Who Pays? 7th Edition, January 2025. <https://itep.org/whopays-7th-edition/>
6. W. Steven Barnett and GG Weisenfeld, “Cities Emerge as Preschool Champions,” National Institute for Early Education Research, May 22, 2018. <https://nieer.org/research-library/cities-emerge-preschool-champions>; Stateline, “As More Cities Push for Paid Sick Leave, States Push Back,” September 24, 2018. <https://stateline.org/2018/09/24/as-more-cities-push-for-paid-sick-leave-states-push-back/>; Yannet Lathrop, “Minimum Wage Basics: Local Minimum Wage Laws,” National Employment Law Project, July 2, 2025. <https://www.nelp.org/insights-research/city-minimum-wage-laws-recent-trends-and-economic-evidence-on-local-minimum-wages/>; “Guaranteed Income Pilots Dashboard,” Stanford Basic Income Lab and Center for Guaranteed Income Research, 2025. <https://guaranteedincome.us/>
7. See Fox, Glassman, and Pacas (2020) for additional information on the construction of the SPM in the ACS.
8. Institute on Taxation and Economic Policy, State Child Tax Credits and Child Poverty: A 50-State Analysis, November 16, 2022. <https://itep.org/state-child-tax-credits-and-child-poverty-50-state-analysis/>
9. Media reports indicate that, starting in August 2025, the Internal Revenue Service has begun sharing confidential taxpayer data with immigration enforcement authorities under an unprecedented and legally dubious agreement aimed at facilitating the deportation of immigrant tax filers. Furthermore, the Trump administration has also stated its intention to compel states to disclose a wide range of data relating to programs they administer, also with the goal of facilitating mass deportations. Against this backdrop, encouraging immigrants to file tax returns and to claim federal, state, and/or local tax credits could also put them at risk. Mechanisms for protecting confidential tax filer data from immigration authorities must be devised to prevent this possibility.
10. Vinh, Ryan, Danielle Wilson, Sophie Collyer, Megan Curran, and Christopher Wimer. Assessing the Potential Impacts of Refundable State Child Tax Credit Designs on Child Poverty. Center on Poverty and Social Policy, Columbia University, April 21, 2025. <https://povertycenter.columbia.edu/publication/2025/refundable-state-child-tax-credit-designs>
11. For more information on the importance of early childhood development, see: <https://developingchild.harvard.edu/>
12. For a detailed review of the history of the CTC, see Waldfogel (2025, chap 2).

- 13.** Sophie Collyer, David Harris, and Christopher Wimer, “Left Behind: The One-Third of Children in Families Who Earn Too Little to Get the Full Child Tax Credit,” Poverty and Social Policy Brief, vol. 3, no. 6, Center on Poverty and Social Policy, Columbia University, May 13, 2019. <https://povertycenter.columbia.edu/publication/2019/children-left-behind-in-child-tax-credit>
- 14.** Kalee Burns, Liana Fox, and Danielle Wilson. “Child Poverty Fell to Record Low 5.2% in 2021.” U.S. Census Bureau, September 13, 2022. <https://www.census.gov/library/stories/2022/09/record-drop-in-child-poverty.html>
- 15.** Kalee Burns and Liana E. Fox, “The Impact of the 2021 Expanded Child Tax Credit on Child Poverty,” U.S. Census Bureau, SEHSD Working Paper #2022-24, November 2022. <https://www.census.gov/content/dam/Census/library/working-papers/2022/demo/sehswp2022-24.pdf>
- 16.** Sophie Collyer, Megan Curran, and David Harris. Children Left Behind by the Child Tax Credit in 2023. Poverty and Social Policy Brief, vol. 8, no. 5, Center on Poverty and Social Policy, Columbia University, October 10, 2024. <https://povertycenter.columbia.edu/publication/2024/children-left-behind-by-the-child-tax-credit-in-2023>
- 17.** The final bill has been referred to as the “One Big Beautiful Bill Act” (OBBBA), but is formally known as the budget reconciliation bill, H.R.1. In this report, we refer to the final bill as OBBBA.
- 18.** Sophie Collyer, Christopher Yera, Megan Curran, David Harris, and Christopher Wimer. Children Left Behind by the H.R.1 “One Big Beautiful Bill Act” Child Tax Credit. Poverty and Social Policy Brief, vol. 9, no. 5. Center on Poverty and Social Policy, Columbia University, August 6, 2025. <https://povertycenter.columbia.edu/publication/2025/children-left-behind-by-child-tax-credit-reconciliation>
- 19.** Independent estimates indicate that close to 2.7 million U.S. citizen and legal permanent resident children are in families where no parent has an SSN. see: Lisiecki et al. 2025. What will deportations mean for the child welfare system? Washington DC: Brookings Institution.
- 20.** Steve Wamhoff, Michael Ettlinger, Carl Davis, Jon Whiten. How Will the Trump Megabill Change Americans’ Taxes in 2026? Institute on Taxation and Economic Policy, July 22, 2025. <https://itep.org/how-will-trump-megabill-change-americans-taxes-in-2026/>
- 21.** Sophie Collyer, Christopher Yera, Megan Curran, David Harris, and Christopher Wimer. Children Left Behind by the H.R.1 “One Big Beautiful Bill Act” Child Tax Credit. Poverty and Social Policy Brief, vol. 9, no. 5. Center on Poverty and Social Policy, Columbia University, August 6, 2025. <https://povertycenter.columbia.edu/publication/2025/children-left-behind-by-child-tax-credit-reconciliation>
- 22.** Neva Butkus. Which States Expanded Refundable Credits in 2025? Institute on Taxation and Economic Policy, July 24, 2025. <https://itep.org/state-child-tax-credits-earned-income-tax-credits-2025/>
- 23.** In 2020, the states with CTCs were Arizona, California, Idaho, New York, Oklahoma, and Maine. See Butkus (2025) for additional details.
- 24.** Neva Butkus. When Did Your State Enact a Child Tax Credit? Institute on Taxation and Economic Policy, July 30, 2025. <https://itep.org/when-did-your-state-enact-a-child-tax-credit-2025/>
- 25.** Idaho’s Child Income Tax Credit is set to sunset unless action is taken by lawmakers before January 1, 2026. See Sophie Collyer, Megan Curran, Aidan Davis, David Harris, and Christopher Wimer, State Child Tax Credits and Child Poverty: A 50-State Analysis, Institute on Taxation and Economic Policy and Center on Poverty and Social Policy, Columbia University, April 2022. <https://itep.org/state-child-tax-credits-and-child-poverty-50-state-analysis/> and Neva Butkus, State Child Tax Credits Boosted Financial Security for Families and Children in 2025, Institute on Taxation and Economic Policy, September 11, 2025. <https://itep.org/state-child-tax-credits-2025/>

26. As noted earlier, Appendix A shows the local credit amounts that would reduce child poverty by 25 percent or 50 percent after the federal and state credits are already accounted for. The latter is a more ambitious antipoverty target for children.

27. Figure 3 presents our best estimates of the current poverty rates in each city based on the most recent available data from the American Community Survey (ACS) Supplemental Poverty Measure research files. The effects of federal and state Child Tax Credits in 2025 were modeled for each city. See Appendix B for additional information on the data and state Child Tax Credit parameters used to produce these estimates.

28. Note that in many analyses by ITEP, CPSP, and other researchers, the effects of state CTCs are estimated by comparing the poverty rate without the state CTC (but with the federal CTC) to the poverty rate after accounting for the state CTC. This analysis is different as we are comparing the poverty rate without the federal and state CTCs to the poverty rate after accounting for both of these policies. These estimates are therefore less comparable to other results examining the anti-poverty effects of state CTCs.

29. For a more in-depth analysis of the differences between state-level Child Tax Credit policies, see Vinh et al. (2025) and Butkus (2025).

30. For a fuller treatment of how state CTC design choices affect poverty reduction, see Vinh et al. (2025).

31. 2025 dollar values are estimated based on legislated dollar amounts and prescribed indexation of dollar amounts for inflation. See Vinh et al 2025 Appendix Table B1 for legislated dollar amounts in the year of latest legislation and indexation methodology details. Actual 2025 dollar amounts may differ slightly from reported here based on state indexation formulae.

32. Additional details are available at Colorado General Assembly. House Bill 24-1311: Family Affordability Tax Credit. 2024 Regular Session. <https://leg.colorado.gov/bills/hb24-1311>

33. ITEP analyzed Governmental Activities Revenues using each city's FY 2023 Annual Comprehensive Financial Report (ACFR). We did not use General Fund expenditures due to inconsistencies in how cities spend their funds.

34. In our model, the more widely available credit begins phasing out at a rate of 5 percent for families with annual adjusted gross incomes above \$110,000 for joint filers and \$75,000 for heads of household.

35. Sophie Collyer, Christopher Yera, Megan Curran, David Harris, and Christopher Wimer, "Children Left Behind by the H.R. 1 'One Big Beautiful Bill Act' Child Tax Credit," Center on Poverty and Social Policy, Columbia University, August 6, 2025.

36. More details available on the Geocorr website: <https://mcdc.missouri.edu/applications/geocorr.html>

37. See Lin (2020) for additional details on this U.S. Census Bureau's approach to developing tax units and Collyer et al. (2025) for information on how this methodology was applied in the ACS.

HB 363_MD Center on Economic Policy_FAV.pdf

Uploaded by: Kali Schumitz

Position: FAV



FEBRUARY 12, 2026

Local Child Tax Credits Would Boost the Power of A Policy Already Helping Thousands of Children

Position statement in support of House Bill 363

Given before the House Ways and Means Committee

Every child deserves to grow up in a safe home free of the daily stress that comes with economic insecurity. The federal Child Tax Credit advances this goal by providing an income boost to many thousands of low-income Maryland families with children, but it currently provides only minimal benefits to many families, and locks some out entirely.ⁱ Maryland's targeted state Child Tax Credit boosts incomes for the lowest-income households that don't benefit from the full federal credit. **The Maryland Center on Economic Policy supports House Bill 363 because it would allow local governments to provide a matching credit that further reduces poverty for Maryland children.**

While working family tax credits like the Child Tax Credit are an important part of economic security in the best of times, today's rising unemployment and higher costs for everyday essentials makes this additional assistance even more vital. A larger refund at tax time would be a huge help to the families struggling to make ends meet.

The Child Tax Credit helps make the cost of raising children more affordable for families by offsetting the federal income tax they owe or, if the value of the credit exceeds the tax they owe, by providing part or all of the credit in the form of a refund. The federal credit provides families an income boost of up to \$2,200 per child at tax time. Research shows that this additional income can bring lifetime benefits—improving children's health, helping them succeed in school, and ultimately enabling many to get better jobs in adulthood.ⁱⁱ Yet for many children who would gain the most from increased family income, the credit currently provides only small benefits or leaves them out entirely:

- Families whose income is less than \$2,500 per year are not eligible to claim the credit at all.
- Families with slightly higher incomes—up to about \$30,000 for a single parent with one child, or higher for larger families—can claim a partial credit, but are not eligible for the full \$2,200 per child.
- The Trump administration's signature federal tax overhauls in 2017 and 2025 expanded the maximum value of the credit but capped the refundable portion that is most helpful to low-income families at a lower amount. This choice shut struggling families out of the biggest benefits, even as the law handed a windfall to large corporations and wealthy individuals.

Maryland's state CTC provides very-low-income families with young children or children with disabilities a benefit of \$500 per child. Eligible families with income up to \$15,000 receive the full credit and those with income up to \$24,000 receive a partial credit. This modest income boost could mean better access to nutritious food or enriching reading materials, or could even help keep the electricity or heat on.

Allowing local governments to provide a match to the state credit could further help thousands of families afford the basics. Maryland already allows local governments to provide a local match to the Earned Income Tax Credit and Montgomery County has long had a successful program to do so, known as the Working Families Income Supplement.ⁱⁱⁱ County leaders are able to adjust the match of the state EITC each year to respond to economic needs and the capacity of their local budget, and families are automatically able to receive much-needed cash without having to file additional tax forms.

Because the state Child Tax Credit is targeted to very low-income households that might not get the full benefit of other working family tax credits, the option to provide a local match would complement the existing EITC program and provide a more targeted option for jurisdictions that can't currently afford to match the EITC, which has much broader eligibility and reaches more families.

We owe it to Maryland children to guarantee a basic living standard and a foundation for success at school and in the workforce. House Bill 363 would represent an important step in that direction.

For these reasons, the Maryland Center on Economic Policy respectfully requests that the Ways and Means Committee make a favorable report on House Bill 363.

Equity Impact Analysis: House Bill 363

Bill summary

House Bill 363 would allow a local counterpart to the state child tax credit. Under the state credit, tax filers are eligible to claim the credit if they have a qualifying child under age 6 or an older child who has a disability. Those that have federal adjusted gross income under \$15,000 receive the full credit and it gradually phases down for those with income up to \$24,000. The local match does not need to equal 100% of the state credit.

Background

The federal Child Tax Credit provides families a credit of up to \$2,200 per child. Families with annual income less than \$2,500 are not eligible to claim the federal credit, and families with income below about \$30,000 to \$45,000 (depending on filing status and number of children) can claim only a partial credit. Research shows that increased family income in early childhood can bring lifetime health, educational, and workforce benefits.^{iv}

The 2017 and 2025 federal tax overhauls expanded the maximum value of the credit, but capped the refundable portion that is most helpful to low-income families, meaning that millions of children nationwide saw only minimal gains.

Equity Implications

While there are not sufficient data to estimate the characteristics of people who would benefit from House Bill 363, data from the current federal child tax credit as well as legislation to improve the credit suggest that the bill would likely bring the largest benefits to women and people of color:

- The Working Families Tax Relief Act was a bill to expand and improve the federal Earned Income Tax Credit and Child Tax Credit, including reforms similar to Maryland's CTC. Among Maryland households expected to benefit from this bill, 57% were households of color; 40% were Black households; 11% were

Latinx households; and 8% are Asian, American Indian/Alaska Native, or belonging to another racial group.^v

- As of tax year 2012, 65% of Maryland parents benefiting from the federal earned income tax credit or child tax credit were women.^{vi}
- Because House Bill 363 increases benefits for families with the lowest incomes—who, because of historical and ongoing policies, are disproportionately made up of women and people of color—the bill would likely have even greater benefits for these groups than the current Child Tax Credit.

Impact

House Bill 363 would likely **improve racial and economic equity** in Maryland if local governments adopt their own credits.

ⁱ “Policy Basics: The Child Tax Credit,” Center on Budget and Policy Priorities, n.d., <https://www.cbpp.org/research/federal-tax/the-child-tax-credit>

ⁱⁱ “Policy Basics: The Child Tax Credit”

ⁱⁱⁱ See Andrew Boardman, “These Three Local EITCs Are Boosting Family Incomes at Tax Time,” Institute on Taxation and Economic Policy, 2024, <https://itep.org/three-local-eitcs-boosting-family-incomes-at-tax-time/>

^{iv} Katherine Michelmore, “Tax Credits and Child Outcomes: Lessons from the U.S., U.K., and Canada,” NBER Working Paper 33822, 2025, <https://www.nber.org/papers/w33822>

^v Chuck Marr, Brendan Duke, Yixuan Huang, Jennifer Beltrán, Vincent Palacios, and Arloc Sherman, “Working Families Tax Relief Act Would Raise Incomes of 46 Million Households, Reduce Child Poverty,” Center on Budget and Policy Priorities, 2019, <https://www.cbpp.org/research/federal-tax/working-families-tax-relief-act-would-raise-incomes-of-46-million-households>

^{vi} “Fact Sheet: 21 Million Mothers Benefit from Tax Credits for Lower-Income Working Families,” Center on Budget and Policy Priorities, 2015, <https://www.cbpp.org/research/federal-tax/fact-sheet-21-million-mothers-benefit-from-tax-credits-for-lower-income-working>
“Fact Sheet: 21 Million Fathers Benefit from Tax Credits for Lower-Income Working Families,” Center on Budget and Policy Priorities, 2015, <https://www.cbpp.org/research/federal-tax/fact-sheet-13-million-fathers-benefit-from-tax-credits-for-lower-income-working>

HB363_FAV_Stewart.pdf

Uploaded by: Kate Stewart

Position: FAV



MONTGOMERY COUNTY COUNCIL
ROCKVILLE, MARYLAND

KATE STEWART
COUNCILMEMBER
MONTGOMERY COUNTY COUNCIL

February 12, 2026

TO: The Honorable Jheanelle Wilkins
Chair, Ways and Means Committee

FROM: Kate Stewart
Montgomery County Councilmember, District 4

RE: House Bill 363, *Income Tax - Local Child Tax Credit - Authorization*
Support

My name is Kate Stewart and I serve as the Montgomery County Councilmember for District 4. Today, I am speaking on behalf of myself in support of House Bill 363, *Income Tax - Local Child Tax Credit - Authorization*.

This bill would authorize a county to provide, by law, a credit against the county income tax for certain dependent children. Dependent children that qualify are those under the age of six claimed as dependents when filing taxes. A child with a disability who is under the age of 17 would also qualify. The tax credit that this bill authorizes sets the federal adjusted gross income threshold to \$15,000, allowing a resident who makes less than that who is a taxpayer to claim a credit of \$500 against the county income tax for each qualified child. If a resident's federal adjusted gross income is higher than \$15,000, the amount of the credit shall be reduced by \$50 for each \$1,000, or fraction thereof, except that the reduction cannot reduce the credit below zero.

Child tax credits are a proven tool for reducing poverty. We know that raising a family can be costly, especially in jurisdictions like Montgomery County. Expanding the availability of these tax credits to the county level is essential to make the cost of raising children more affordable for families across our state. Growing up the child of a single parent, I know first hand the

The Honorable Jheanelle Wilkins

Re: House Bill 363, *Income Tax - Local Child Tax Credit - Authorization*

February 12, 2026

Page 2

importance of additional financial supports for families and the long term benefits these can provide. These benefits include improved health and educational outcomes during childhood, and increased educational attainment, employment, and earnings in young adulthood.¹ We also see increased local spending as families tend to pay for immediate needs with the credit. This bill will benefit not only individual families, but entire communities.

This legislation is needed to provide greater security for our families. I urge you to support this bill to help provide safe and healthy childhoods for Maryland's children.

¹ [Center on Budget and Policy Priorities: The Child Tax Credit](#)

HB0363-WM_MACo_SUP.pdf

Uploaded by: Kevin Kinnally

Position: FAV



House Bill 363

Income Tax - Local Child Tax Credit - Authorization

MACo Position: **SUPPORT**

To: Ways and Means Committee

Date: February 12, 2026

From: Kevin Kinnally

The Maryland Association of Counties (MACo) **SUPPORTS** HB 363. This bill authorizes counties to offer a local child tax credit against the county income tax for very low-income families.

MACo generally supports legislation that provides broad authority to enact incentives for revitalization and tax relief, and welcomes the opportunity to work with state policymakers to develop flexible, optional tools to create broad or targeted incentives. Counties prefer the approach offered by HB 363, as it provides local autonomy to determine the best way to offer these incentives rather than those mandating reductions in local revenue sources.

The bill focuses on families with extremely low income. Eligibility is limited to families with federal adjusted gross income below \$15,000, directing relief to residents facing the most acute financial strain, while limiting the fiscal exposure for counties that choose to participate.

The bill mirrors the structure of Maryland's existing State child tax credit but keeps all decisions local. Counties would decide whether to offer the credit, set its amount, and determine whether it is refundable. Counties could tailor the credit to local priorities and fiscal capacity, rather than applying a statewide mandate that affects county revenue without local input.

Counties continue to face growing fiscal pressure from education, infrastructure, public safety, and employee costs. At the same time, counties operate with limited tools to respond to changing community needs. HB 363 provides a targeted, locally driven option that counties may adopt when it aligns with local goals and fiscal capacity.

For these reasons, MACo urges the Committee to issue a **FAVORABLE** report on HB 363.

CAB Testimony_HB363_Income Tax - Local Child Tax C

Uploaded by: Leslie Frey

Position: FAV



**Montgomery County Community Action Board Testimony
HB363: Income Tax - Local Child Tax Credit - Authorization
February 12, 2026
SUPPORT**

TO: The Honorable Jheanelle K. Wilkins, Chair; The Honorable Jessica Feldmark, Vice Chair; and Members of the Ways and Means Committee
FROM: The Montgomery County Community Action Board

The Montgomery County Community Action Board, the County's local, state, and federally designated anti-poverty group, strongly supports HB363, which if passed, would allow local jurisdictions to create their own Child Tax Credit (CTC). The full Credit would be available to County residents with an adjusted gross income of \$15,000 or less. For each \$1,000 that a taxpayer's income increases beyond the threshold, the credit would be reduced by \$50. This continues until the credit reaches phases out to zero.

HB363 would have a positive effect in any jurisdiction that chooses to establish a CTC. Research consistently shows that Child Tax Credits, the Earned Income Tax Credit, and other credits that support workers with modest incomes are some of the best tools available to help families become financially stable. These credits have also supported households in their ability to afford basic needs like food and shelter. Links to increased birthweights¹, with larger impacts for births to African American women, to improved maternal health², and to decreases in children entering foster care³ have also been noted.

Nearly 78,000 residents make up the 7.2% poverty rate here in Montgomery County. Many of these households would benefit from an additional tax credit. Even a modest tax credit can help a family pay their rent, pay for groceries, put money into savings, and move towards the Self-Sufficiency Standard, which is \$122,943 for a family of four with two adults, one school-age child, and one preschooler.⁴ This is over four times the Federal Poverty Level.

¹<https://pubs.aeaweb.org/doi/pdfplus/10.1257/pol.20120179>

²https://www.kellogg.northwestern.edu/faculty/garthwaite/htm/EITC_Health_Final_Draft.pdf

³<https://journals.sagepub.com/doi/full/10.1177/1077559519900922>

⁴<https://www.montgomerycountymd.gov/HHS-Program/OCA/CommunityAction/Self-SufficiencyStandard.html>

Our agency's own Volunteer Income Tax Assistance (VITA) program would be in an excellent position to link eligible residents with a new Child Tax Credit. The VITA program served nearly 2,400 moderate to low income households last year. Staff and program volunteers receive training about various tax credits available and would be able to connect our program participants with a new credit.

The passing of this bill will offer the potential for a Montgomery County Child Tax Credit, creating additional financial support to County residents who are struggling to pay for critical necessities. The Montgomery County Community Action Board strongly supports HB363.

HB 363 - MFN - Local CTC - FAV.pdf

Uploaded by: Lisa Klingenmaier

Position: FAV



Testimony in Support of HB 363 Income Tax – Local Child Tax Credit – Authorization

House Ways and Means Committee

February 11, 2026

Maryland Family Network (MFN) strongly supports HB 363, which authorizes a county to provide a local child tax credit against their county income tax.

Maryland Family Network (MFN) has worked since 1945 to improve the availability and quality of child care and other vital supports for children and their families. We have been active in state and federal debates on policies that address the needs of working families and are strongly committed to ensuring that children and their caregivers have access to the resources and opportunities they need to thrive.

The Child Tax Credit (CTC) is a successful anti-poverty tool that boosts the financial stability of low-income families. The impacts of childhood poverty are long-lasting and significant, including impaired development, decreases in educational achievement, and declines in health.¹ Even a modest increase in household income for families living in poverty can significantly improve outcomes for children and society as a whole.² Ultimately, tax credits – like the CTC – help low-income families make ends meet and continue working, which strengthens their connection to the workforce and builds economic security.

HB 363 provides an opportunity for counties to build on the success of our state CTC, and target resources to the lowest income households who are left out of receiving the full federal CTC.

There are many families who make too little money to qualify for the federal CTC, leaving a gap in who can benefit from the federal credit. Disparities persist in who accesses the federal CTC, as Black and Brown families disproportionately fall into the gap of making too little money to receive the credit, as they are overrepresented in low-wage work.³ Broadening the scope of who can access tax credits by allowing local jurisdictions to enact their own child tax credits will increase the financial resources of historically marginalized populations, and bolster local economic activity.

Counties can already create a local match to the State's Earned Income Tax Credit (EITC), and HB 363 can expand upon the success of similar local credits. Montgomery County has created a local match tax credit, called the Working Families Income Supplement, which is a refundable credit that delivers a direct payment equal to a percentage of a household's Maryland state EITC refund. Around 64,000 families in Montgomery County take advantage of the credit, and over 95% of these

¹ The Center for Law and Social Policy. 2023. *The Enduring Effects of Childhood Poverty*. <https://www.clasp.org/blog/the-enduring-effects-of-childhood-poverty/>

² Gennetian LA, Castells N, Morris P. Meeting the Basic Needs of Children: Does Income Matter? *Child Youth Serv Rev*. 2010 Sep 1;32(9):1138-1148. <https://pmc.ncbi.nlm.nih.gov/articles/PMC2913899/#>

³ Center on Budget and Policy Priorities. 2025. *The Child Tax Credit*. <https://www.cbpp.org/research/federal-tax/the-child-tax-credit>

local EITC dollars flow to households in the bottom two-fifths of income earners.⁴ Allowing jurisdictions to create their own Child Tax Credit will complement and boost the success of other local tax credits, strengthening family stability across the state.

Allowing localities to create their own tax credit match to the state's CTC will get more cash to low-income families with young children. **Maryland Family Network respectfully urges a favorable report on HB 363.**

Submitted by: Lisa Klingemaier, Deputy Director of Public Policy

⁴ Institute of Tax and Economic Policy. 2024. *These three local EITCs are boosting family incomes at tax time.* <https://itep.org/three-local-eitcs-boosting-family-incomes-at-tax-time/>

Maryland Catholic Conference_FAVHB363_.pdf

Uploaded by: Michelle Zelaya

Position: FAV



MARYLAND
CATHOLIC
CONFERENCE

February 12th 2026

HB363

Income Tax - Local Child Tax Credit – Authorization
Ways and Means Committee
Position: Favorable

The Maryland Catholic Conference offers this testimony in support of **House Bill 363**. **The Maryland** Catholic Conference is the public policy representative of the three (arch)dioceses serving Maryland, which together encompass over one million Marylanders. Statewide, their parishes, schools, hospitals and numerous charities combine to form our state's second largest social service provider network, behind only our state government.

House Bill 363 allows counties in Maryland to establish their own child tax credit by providing credit against the county income tax for eligible dependent children. This legislation does not mandate the creation of credit but instead empowers local jurisdictions with the flexibility to design a child-focused tax benefit that meets the unique needs of their communities. The bill simply authorizes counties to adopt a local child tax credit through local law.

This policy gives counties an effective tool to support families, reduce childhood poverty, and ease the financial burdens parents face. A local child tax credit would help families cover essential expenses such as food, childcare, education, and housing—costs that continue to rise across Maryland. By giving counties, the discretion to tailor their credit based on local needs and resources, this bill promotes responsive and community-specific solutions. Strengthening financial stability for families directly contributes to healthier children, stronger communities, and long-term economic growth.

Family is the foundational unit of society and every person's dignity is closely connected to their ability to care for those they love. Supporting families, especially during times of financial strain, is an expression of our shared moral responsibility. A local child tax credit reflects the Church's call to uphold the dignity of parents by helping them meet the basic needs of their children. When families are given the tools to remain stable, united, and supported, entire communities flourish. This legislation honors the sacred responsibility of parents and helps ensure that every child can grow in security, hope, and love.

Authorizing counties to implement a local child tax credit empowers families to stay resilient, even in difficult times, by easing financial burdens and strengthening the stability of the household. When parents have the resources they need to provide for their children, dignity is protected, family unity is strengthened, and communities become healthier and more compassionate.

For these reasons, the Maryland Catholic Conference urges a favorable report on **House Bill 363**.