



COMPTROLLER *of* MARYLAND

S E R V I N G   T H E   P E O P L E

# Impact of the Federal Government on Maryland's Economy

August 2025



# Project Overview

- Partnership between Office of the Comptroller & Robert H. Smith School of Business
- Measure the direct impact of federal government spending and jobs in Maryland
- Inform the *planning* and *pivoting* of key stakeholders: state partners, local governments, business community, nonprofits, legal community
- Three outputs
  1. Baseline report (*released in June*)
  2. Scenario case studies (to be released)
  3. Interactive Tableau Tool (to be released)





# Annual Federal Spending in Maryland

Wage Income	\$26.9 Billion
Retirement Income	\$8.80 Billion
Contracts	\$46.2 Billion
Grants	\$30.6 Billion
Direct Payments	\$37.7 Billion

**Total: \$150.2 Billion**

*Notes/Sources:* Income is for tax year 2023 from Comptroller of Maryland  
Spending is for federal fiscal year 2024 from USAspending.gov

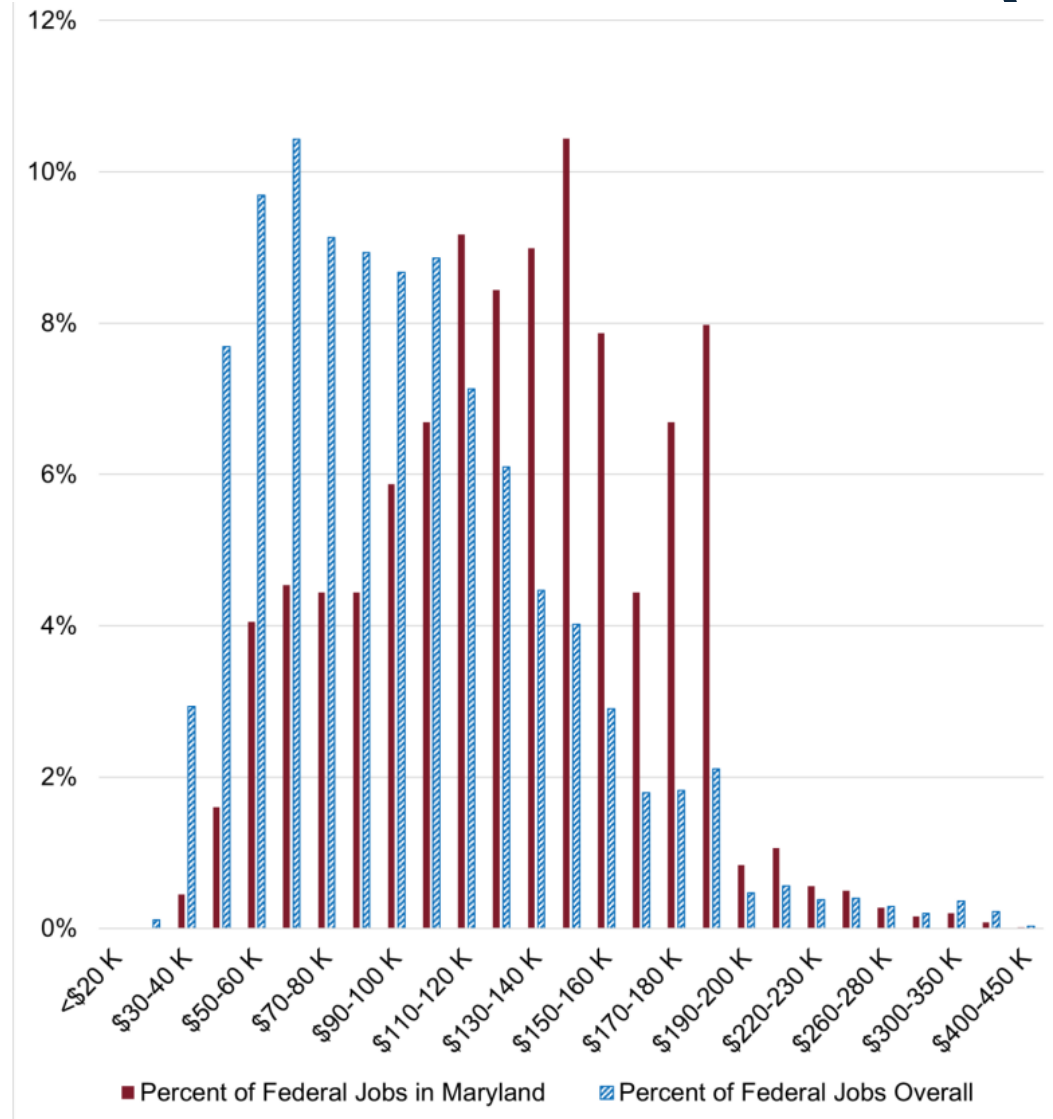
[www.MarylandComptroller.gov](http://www.MarylandComptroller.gov)

# Jobs: Location of Federal Government Jobs and Residents (FFY 2023)

State	Number of Federal Jobs (QCEW)	Number of Federal Jobs Held by Marylanders (QCEW-LODES)	Percent of Federal Jobs Held by Marylanders
Maryland	158,475	128,335	81%
Virginia	189,324	22,479	12%
Washington, D.C.	190,617	78,395	41%
<b>Total</b>	<b>538,416</b>	<b>229,209</b>	

*Sources: Bureau of Labor Statistics, Quarterly Census of Employment and Wages (QCEW); Longitudinal Employer-Household Dynamics Origin-Destination Employment Statistics (LODES)*

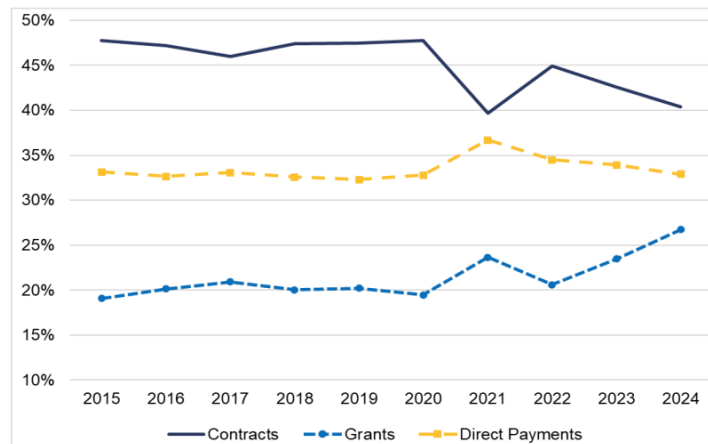
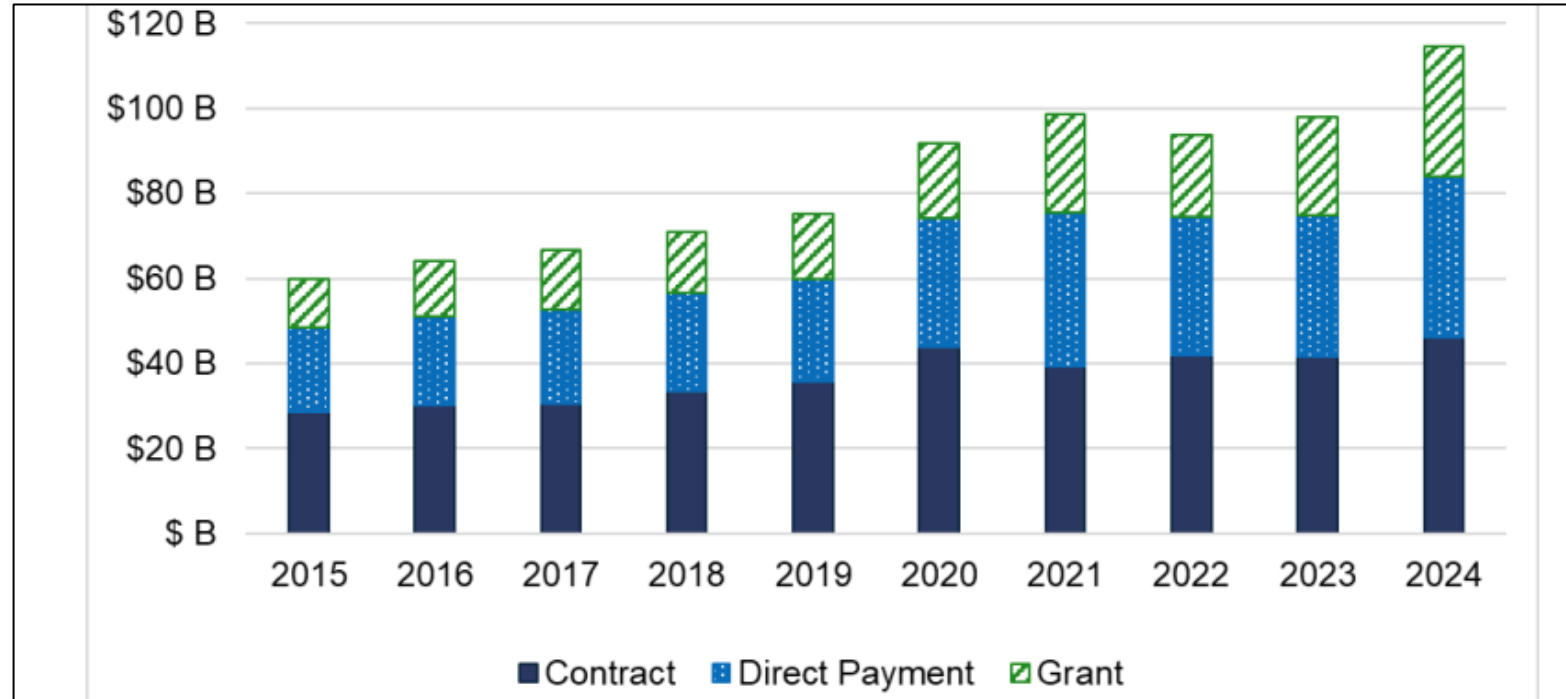
# Jobs: Salary Distribution Federal Government Jobs in MD v US (FFY 2023)



Source: Office of Personnel Management



# Spending: Federal Government Spending by Type (FFY 2015-24)



# Jobs & Spending: Agencies (\$ in billions)

Agency	Wage Income/ Jobs/ Workers	Contracts	Grants	Direct Payments	Total/%
HHS	\$5.6/ 40,110/34,405	\$8.7	\$14.8	\$1.6	\$30.7/ 20%
SSA	\$1.1/ 10,307/8,538	\$1.2	\$0	\$25.7	\$28.0/ 19%
DoD	\$5.4/ 45,139/54,443	\$18.4	\$0.6	\$0	\$24.4/ 16%
VA	\$0.6/ 6,282/9,250	\$6.5	\$0	\$3.3	10.4/ 7%
<b>Commerce</b>					
Commerce	\$1.8/ 13,438/12,871	\$1.6	0.4	-	-
<b>Treasury</b>					
Treasury	\$0.7/ 5,466/7,524	\$1.6	-	-	-
<b>DHS</b>					
DHS	\$0.5/ 4,527/15,693	\$1.6	0.5	-	-
<b>DOJ</b>					
DOJ	9,650 workers				
<b>USDA</b>					
USDA	4,507 workers		\$0.8	\$1.4	
<b>State</b>					
State	4,221 workers				
<b>NASA</b>					
NASA	3,088 workers	\$1.9			

Notes/Sources: Income, OPM FFY 23; USAspending.gov, FFY 24

# Jobs & Spending: Counties (\$ in billions)

County	Wage Income/ Jobs/ Workers	Contracts	Grants	Direct Payments	Total/%
Montgomery	\$6.5/ 48,461/54,729	\$17.4	\$7.9	\$8.3	\$40.1/ 27%
Prince George's	\$5.1/ 30,399/54,379	\$5.3	\$1.0	\$4.0	\$15.4/ 10%
Anne Arundel	\$3.4/ 15,676/21,107	\$5.2	\$0.2	\$3.4	\$12.2/ 8.1%
Howard	\$2.1/ 1,854/13,252	\$3.8	\$2.1	\$3.3	\$11.3/ 7.5%
Baltimore	\$1.7/ 11,446/16,919	\$2.5	\$1.0	\$4.8	\$10.0/ 6.7%
Baltimore City	\$0.8/ 12,189/10,014	\$2.5	\$2.9	\$2.1	\$7.5/ 5.0%
St. Mary's	\$1.1/ 10,297/7,881	\$4.4	\$0.02	\$0.6	\$5.0/ 3.3%
Harford	\$1.1/ 11,432/11,267	\$2.4	\$0.01	\$1.5	\$5.0/ 3.3%
Frederick	\$1.2/ 4,726/9,178	\$1.8	\$0.1	\$1.4	\$4.5/ 3.0%
Charles	\$1.6/ 3,711/15,574	\$0.4	\$0.07	\$0.9	\$1.4/ 0.9%

Notes/Sources: Income, COM, QCEW TY/FFY 23; USAspending.gov, FFY 24



COMPTROLLER *of* MARYLAND

S E R V I N G T H E P E O P L E

**Thank you!**

[www.MarylandComptroller.gov](http://www.MarylandComptroller.gov)